

Datasheet for ABIN652840  
**anti-C1QB antibody (N-Term)**

## 2 Images

[Go to Product page](#)

## Overview

|                      |  |
|----------------------|--|
| Quantity:            | 400 µL                                       |
| Target:              | C1QB   |
| Binding Specificity: | AA 55-81, N-Term                             |
| Reactivity:          | Human  |
| Host:                | Rabbit                                       |
| Clonality:           | Polyclonal                                   |
| Conjugate:           | This C1QB antibody is un-conjugated          |
| Application:         | Western Blotting (WB), Flow Cytometry (FACS) |

## Product Details

|               |  |
|---------------|--|
| Immunogen:    | This C1QB antibody is generated from rabbits immunized with a KLH conjugated synthetic peptide between 55-81 amino acids from the N-terminal region of human C1QB. |
| Clone:        | RB21734  |
| Isotype:      | Ig Fraction  |
| Purification: | This antibody is purified through a protein A column, followed by peptide affinity purification.   |

## Target Details

|                   |  |
|-------------------|--|
| Target:           | C1QB   |
| Alternative Name: | C1QB ( <a href="#">C1QB Products</a> )   |
| Background:       | C1QB is a major constituent of the human complement subcomponent C1q. C1q associates |

## Target Details

with C1r and C1s in order to yield the first component of the serum complement system. Deficiency of C1q has been associated with lupus erythematosus and glomerulonephritis. C1q is composed of 18 polypeptide chains: six A-chains, six B-chains, and six C-chains. Each chain contains a collagen-like region located near the N terminus and a C-terminal globular region. The A-, B-, and C-chains are arranged in the order A-C-B on chromosome 1.

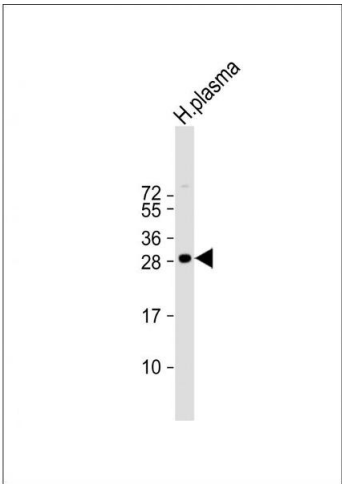
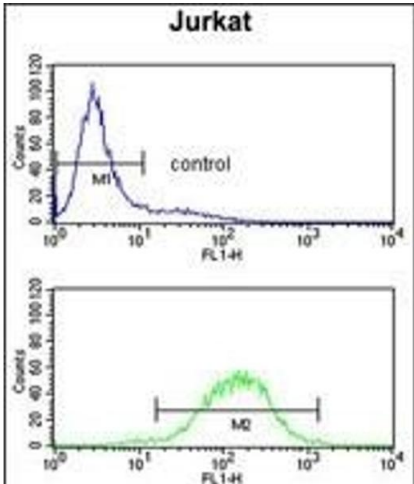
|                   |                                   |
|-------------------|-----------------------------------|
| Molecular Weight: | 26722                             |
| Gene ID:          | 713                               |
| NCBI Accession:   | <a href="#">NP_000482</a>         |
| UniProt:          | <a href="#">P02746</a>            |
| Pathways:         | <a href="#">Complement System</a> |

## Application Details

|                    |                         |
|--------------------|-------------------------|
| Application Notes: | WB: 1:1000. FC: 1:10~50 |
| Restrictions:      | For Research Use only   |

## Handling

|                    |  |
|--------------------|--|
| Format:            | Liquid   |
| Buffer:            | Purified polyclonal antibody supplied in PBS with 0.09 % (W/V) sodium azide.   |
| Preservative:      | Sodium azide   |
| Precaution of Use: | This product contains Sodium azide: a POISONOUS AND HAZARDOUS SUBSTANCE which should be handled by trained staff only.                     |
| Storage:           | 4 °C, -20 °C   |
| Storage Comment:   | Maintain refrigerated at 2-8 °C for up to 6 months. For long term storage store at -20 °C in small aliquots to prevent freeze-thaw cycles. |
| Expiry Date:       | 6 months   |



Flow Cytometry

**Image 1.** C1QB Antibody (N-term) (ABIN652840 and ABIN2842546) flow cytometry analysis of Jurkat cells (bottom histogram) compared to a negative control cell (top histogram).FITC-conjugated goat-anti-rabbit secondary antibodies were used for the analysis.

Western Blotting

**Image 2.** Anti-C1QB Antibody (N-term) at 1:1000 dilution + human plasma lysate Lysates/proteins at 20 µg per lane. Secondary Goat Anti-Rabbit IgG, (H+L), Peroxidase conjugated at 1/10000 dilution. Predicted band size : 27 kDa Blocking/Dilution buffer: 5 % NFDM/TBST.