

Datasheet for ABIN652854
anti-FOXC1 antibody (C-Term)[Go to Product page](#)

2 Images

Overview

Quantity:	400 µL
Target:	FOXC1
Binding Specificity:	AA 488-515, C-Term
Reactivity:	Human
Host:	Rabbit
Clonality:	Polyclonal
Conjugate:	This FOXC1 antibody is un-conjugated
Application:	Western Blotting (WB), Flow Cytometry (FACS)

Product Details

Immunogen:	This FOXC1 antibody is generated from rabbits immunized with a KLH conjugated synthetic peptide between 488-515 amino acids from the C-terminal region of human FOXC1.
Clone:	RB22897
Isotype:	Ig Fraction
Predicted Reactivity:	M, Zf, X
Purification:	This antibody is purified through a protein A column, followed by peptide affinity purification.

Target Details

Target:	FOXC1
Alternative Name:	FOXC1 (FOXC1 Products)

Target Details

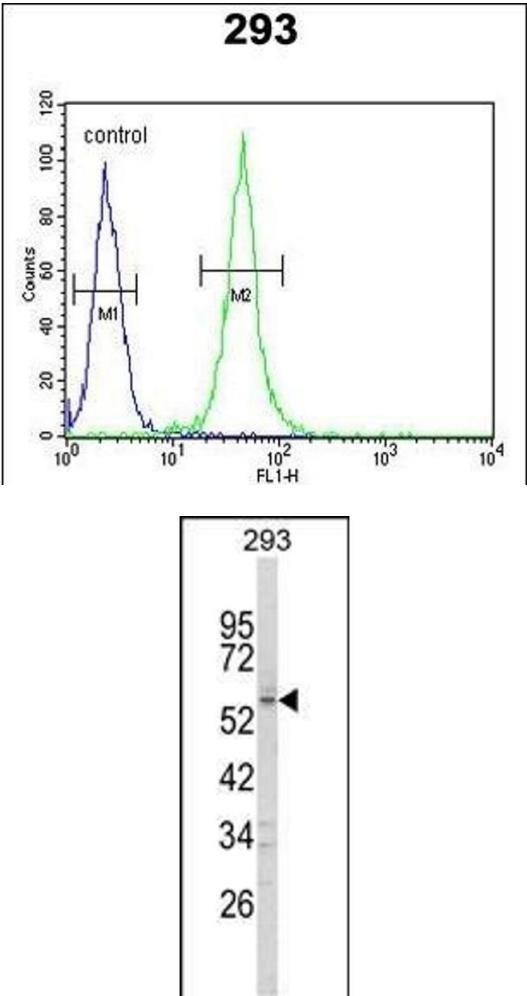
Background:	Binding of FREAC-3 and FREAC-4 to their cognate sites results in bending of the DNA at an angle of 80-90 degrees.
Molecular Weight:	56789
Gene ID:	2296
NCBI Accession:	NP_001444
UniProt:	Q12948
Pathways:	Chromatin Binding , Glycosaminoglycan Metabolic Process

Application Details

Application Notes:	WB: 1:1000. FC: 1:10~50
Restrictions:	For Research Use only

Handling

Format:	Liquid
Buffer:	Purified polyclonal antibody supplied in PBS with 0.09 % (W/V) sodium azide.
Preservative:	Sodium azide
Precaution of Use:	This product contains Sodium azide: a POISONOUS AND HAZARDOUS SUBSTANCE which should be handled by trained staff only.
Storage:	4 °C,-20 °C
Storage Comment:	Maintain refrigerated at 2-8 °C for up to 6 months. For long term storage store at -20 °C in small aliquots to prevent freeze-thaw cycles.
Expiry Date:	6 months



Flow Cytometry

Image 1. FOXC1 Antibody (C-term) (ABIN652854 and ABIN2842554) flow cytometric analysis of 293 cells (right histogram) compared to a negative control cell (left histogram). FITC-conjugated goat-anti-rabbit secondary antibodies were used for the analysis.

Western Blotting

Image 2. Western blot analysis of FOXC1 Antibody (C-term) (ABIN652854 and ABIN2842554) in 293 cell line lysates (35 µg/lane). FOXC1 (arrow) was detected using the purified Pab.