



[Go to Product page](#)

Datasheet for ABIN652863
anti-ETV6 antibody (N-Term)

3 Images

Overview

Quantity:	400 µL
Target:	ETV6
Binding Specificity:	AA 84-111, N-Term
Reactivity:	Human
Host:	Rabbit
Clonality:	Polyclonal
Application:	Western Blotting (WB), Immunohistochemistry (Paraffin-embedded Sections) (IHC (p)), Flow Cytometry (FACS)

Product Details

Immunogen:	This ETV6 antibody is generated from rabbits immunized with a KLH conjugated synthetic peptide between 84-111 amino acids from the N-terminal region of human ETV6.
Clone:	RB23545
Isotype:	Ig Fraction
Predicted Reactivity:	B, M
Purification:	This antibody is purified through a protein A column, followed by peptide affinity purification.

Target Details

Target:	ETV6
Alternative Name:	ETV6 (ETV6 Products)

Target Details

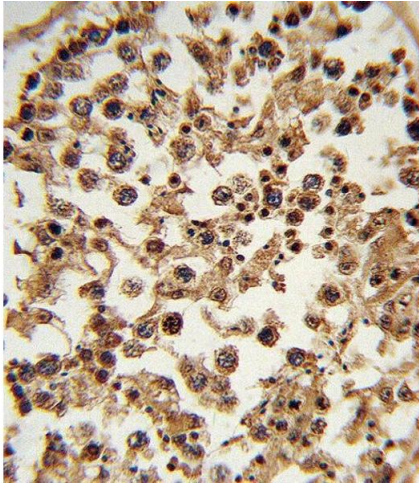
Background:	ETV6 is an ETS family transcription factor. This protein contains two functional domains: a N-terminal pointed (PNT) domain that is involved in protein-protein interactions with itself and other proteins, and a C-terminal DNA-binding domain.
Molecular Weight:	53000
Gene ID:	2120
NCBI Accession:	NP_001978
UniProt:	P41212

Application Details

Application Notes:	WB: 1:2000. IHC-P: 1:10~50. FC: 1:10~50
Restrictions:	For Research Use only

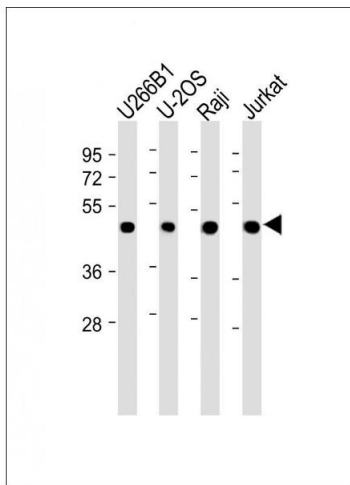
Handling

Format:	Liquid
Buffer:	Purified polyclonal antibody supplied in PBS with 0.09 % (W/V) sodium azide.
Preservative:	Sodium azide
Precaution of Use:	This product contains Sodium azide: a POISONOUS AND HAZARDOUS SUBSTANCE which should be handled by trained staff only.
Storage:	4 °C, -20 °C
Storage Comment:	Maintain refrigerated at 2-8 °C for up to 6 months. For long term storage store at -20 °C in small aliquots to prevent freeze-thaw cycles.
Expiry Date:	6 months



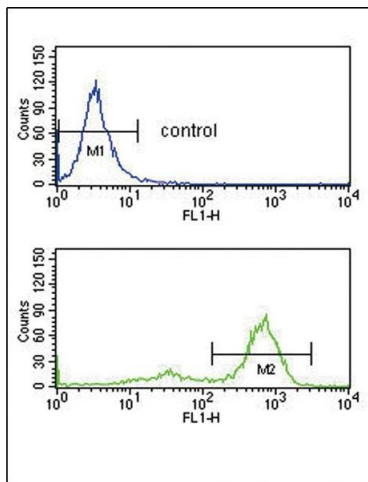
Immunohistochemistry (Paraffin-embedded Sections)

Image 1. Formalin-fixed and paraffin-embedded human testis tissue reacted with ETV6 Antibody (N-term), which was peroxidase-conjugated to the secondary antibody, followed by DAB staining. This data demonstrates the use of this antibody for immunohistochemistry, clinical relevance has not been evaluated.



Western Blotting

Image 2. All lanes : Anti-ETV6 Antibody (N-term) at 1:2000 dilution Lane 1: U266B1 whole cell lysate Lane 2: U-2OS whole cell lysate Lane 3: Raji whole cell lysate Lane 4: Jurkat whole cell lysate Lysates/proteins at 20 µg per lane. Secondary Goat Anti-Rabbit IgG, (H+L), Peroxidase conjugated at 1/10000 dilution. Predicted band size : 53 kDa Blocking/Dilution buffer: 5 % NFDN/TBST.



Flow Cytometry

Image 3. ETV6 Antibody (N-term) (ABIN652863 and ABIN2842561) flow cytometry analysis of K562 cells (bottom histogram) compared to a negative control cell (top histogram). FITC-conjugated goat-anti-rabbit secondary antibodies were used for the analysis.