

Datasheet for ABIN652864
anti-FCGR2A antibody (C-Term)[Go to Product page](#)

2 Images

Overview

Quantity:	400 µL
Target:	FCGR2A
Binding Specificity:	AA 255-282, C-Term
Reactivity:	Human
Host:	Rabbit
Clonality:	Polyclonal
Conjugate:	This FCGR2A antibody is un-conjugated
Application:	Western Blotting (WB), Flow Cytometry (FACS)

Product Details

Immunogen:	This FCGR2A antibody is generated from rabbits immunized with a KLH conjugated synthetic peptide between 255-282 amino acids from the C-terminal region of human FCGR2A.
Clone:	RB23549
Isotype:	Ig Fraction
Purification:	This antibody is purified through a protein A column, followed by peptide affinity purification.

Target Details

Target:	FCGR2A
Alternative Name:	FCGR2A (FCGR2A Products)
Background:	FCGR2A is one member of a family of immunoglobulin Fc receptor genes found on the surface

Target Details

of many immune response cells. The protein encoded by this gene is a cell surface receptor found on phagocytic cells such as macrophages and neutrophils, and is involved in the process of phagocytosis and clearing of immune complexes. Alternative splicing results in multiple transcript variants.

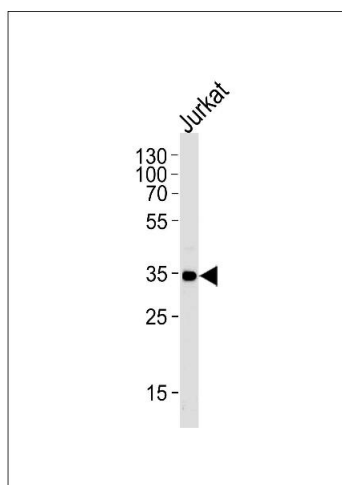
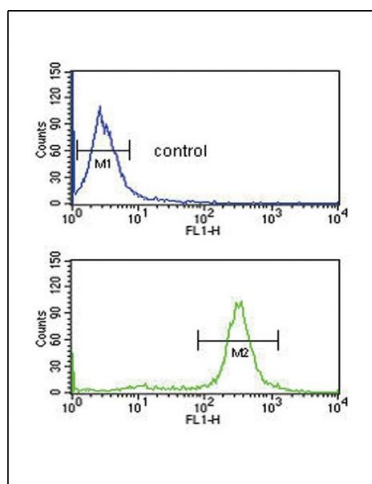
Molecular Weight:	35001
Gene ID:	2212
NCBI Accession:	NP_001129691 , NP_067674
UniProt:	P12318

Application Details

Application Notes:	WB: 1:1000. FC: 1:10~50
Restrictions:	For Research Use only

Handling

Format:	Liquid
Buffer:	Purified polyclonal antibody supplied in PBS with 0.09 % (W/V) sodium azide.
Preservative:	Sodium azide
Precaution of Use:	This product contains Sodium azide: a POISONOUS AND HAZARDOUS SUBSTANCE which should be handled by trained staff only.
Storage:	4 °C,-20 °C
Storage Comment:	Maintain refrigerated at 2-8 °C for up to 6 months. For long term storage store at -20 °C in small aliquots to prevent freeze-thaw cycles.
Expiry Date:	6 months



Flow Cytometry

Image 1. FCGR2A Antibody (C-term) (ABIN652864 and ABIN2842562) flow cytometric analysis of MDA-MB-231 cells (bottom histogram) compared to a negative control cell (top histogram). FITC-conjugated goat-anti-rabbit secondary antibodies were used for the analysis.

Western Blotting

Image 2. Western blot analysis of lysate from Jurkat cell line, using FCGR2A Antibody (C-term) (ABIN652864 and ABIN2842562). (ABIN652864 and ABIN2842562) was diluted at 1:1000 at each lane. A goat anti-rabbit IgG H&L(HRP) at 1:5000 dilution was used as the secondary antibody. Lysate at 35 µg per lane.