



Datasheet for ABIN652869

## anti-Deltex Homolog 1 antibody (AA 382-410)



[Go to Product page](#)

### 3 Images

#### Overview

Quantity:	400 µL
Target:	Deltex Homolog 1 (DTX1)
Binding Specificity:	AA 382-410
Reactivity:	Human
Host:	Rabbit
Clonality:	Polyclonal
Conjugate:	This Deltex Homolog 1 antibody is un-conjugated
Application:	Western Blotting (WB), Flow Cytometry (FACS), Immunohistochemistry (Paraffin-embedded Sections) (IHC (p))

#### Product Details

Immunogen:	This DTX1 antibody is generated from rabbits immunized with a KLH conjugated synthetic peptide between 382-410 amino acids from the Central region of human DTX1.
Clone:	RB23712
Isotype:	Ig Fraction
Predicted Reactivity:	M
Purification:	This antibody is purified through a protein A column, followed by peptide affinity purification.

#### Target Details

Target:	Deltex Homolog 1 (DTX1)
---------	-------------------------

## Target Details

---

Alternative Name:	<a href="#">DTX1 (DTX1 Products)</a>
Background:	DTX1 was identified as encoding a positive regulator of the Notch-signaling pathway in <i>Drosophila</i> . The human gene encodes a protein of unknown function, however, it may play a role in basic helix-loop-helix transcription factor activity.
Molecular Weight:	67368
Gene ID:	1840
NCBI Accession:	<a href="#">NP_004407</a>
UniProt:	<a href="#">Q86Y01</a>
Pathways:	<a href="#">Notch Signaling</a>

## Application Details

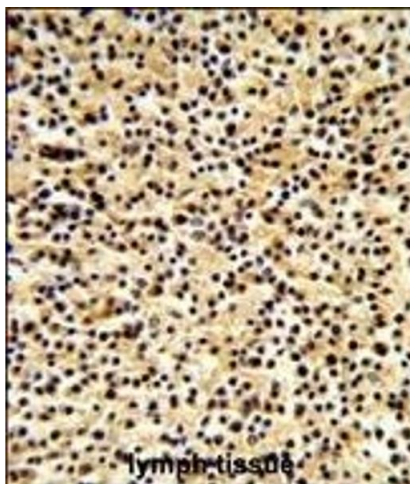
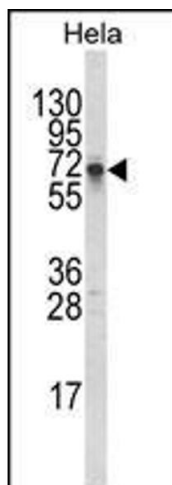
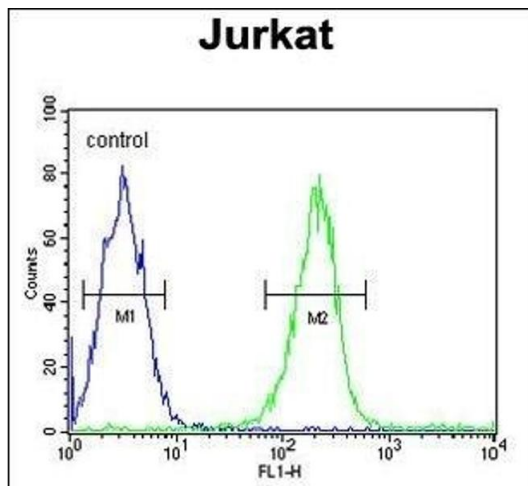
---

Application Notes:	WB: 1:1000. IHC-P: 1:50~100. FC: 1:10~50
Restrictions:	For Research Use only

## Handling

---

Format:	Liquid
Buffer:	Purified polyclonal antibody supplied in PBS with 0.09 % (W/V) sodium azide.
Preservative:	Sodium azide
Precaution of Use:	This product contains Sodium azide: a POISONOUS AND HAZARDOUS SUBSTANCE which should be handled by trained staff only.
Storage:	4 °C, -20 °C
Storage Comment:	Maintain refrigerated at 2-8 °C for up to 6 months. For long term storage store at -20 °C in small aliquots to prevent freeze-thaw cycles.
Expiry Date:	6 months



### Flow Cytometry

**Image 1.** DTX1 Antibody (Center) (ABIN652869 and ABIN2842564) flow cytometric analysis of Jurkat cells (right histogram) compared to a negative control cell (left histogram). FITC-conjugated goat-anti-rabbit secondary antibodies were used for the analysis.

### Western Blotting

**Image 2.** Western blot analysis of DTX1 Antibody (Center) (ABIN652869 and ABIN2842564) in HeLa cell line lysates (35 µg/lane). DTX1 (arrow) was detected using the purified Pab.

### Immunohistochemistry (Paraffin-embedded Sections)

**Image 3.** Formalin-fixed and paraffin-embedded human lymph tissue reacted with DTX1 Antibody (Center), which was peroxidase-conjugated to the secondary antibody, followed by DAB staining. This data demonstrates the use of this antibody for immunohistochemistry, clinical relevance has not been evaluated.