

Datasheet for ABIN652875

## anti-Haptoglobin antibody (Center)

4 Images



[Go to Product page](#)

### Overview

Quantity:	400 µL
Target:	Haptoglobin (HP)
Binding Specificity:	AA 295-322, Center
Reactivity:	Human, Mouse
Host:	Rabbit
Clonality:	Polyclonal
Conjugate:	This Haptoglobin antibody is un-conjugated
Application:	Western Blotting (WB), Flow Cytometry (FACS), Immunohistochemistry (Paraffin-embedded Sections) (IHC (p))

### Product Details

Immunogen:	This HP antibody is generated from rabbits immunized with a KLH conjugated synthetic peptide between 295-322 AA from the Central region of human HP.
Clone:	RB21463
Isotype:	Ig Fraction
Specificity:	This HP antibody is generated from rabbits immunized with a KLH conjugated synthetic peptide between 301~331 amino acids from the Center region of human HP.
Purification:	This antibody is purified through a protein A column, followed by peptide affinity purification.

### Target Details

Target:	Haptoglobin (HP)
---------	------------------

## Target Details

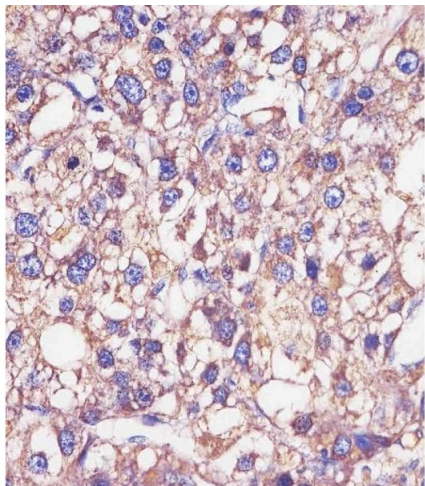
Alternative Name:	HP ( <a href="#">HP Products</a> )
Background:	<p>HP is a preproprotein, which is processed to yield both alpha and beta chains, which subsequently combine as a tetramer to produce haptoglobin. Haptoglobin functions to bind free plasma hemoglobin, which allows degradative enzymes to gain access to the hemoglobin, while at the same time preventing loss of iron through the kidneys and protecting the kidneys from damage by hemoglobin. Mutations in this gene and/or its regulatory regions cause ahaptoglobinemia or hypohaptoglobinemia.</p> <p>Synonyms: Haptoglobin beta chain, Haptoglobin alpha chain, Haptoglobin, HP</p>
Molecular Weight:	45205 DA
Gene ID:	3240
UniProt:	<a href="#">P00738</a>
Pathways:	<a href="#">Transition Metal Ion Homeostasis</a>

## Application Details

Application Notes:	WB = 1:1000, IHC (p) = 1:10-50, FACS = 1:10-50
Restrictions:	For Research Use only

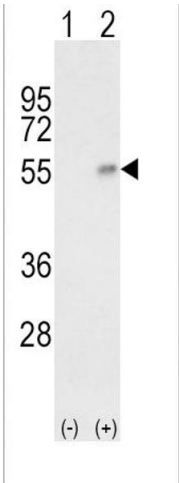
## Handling

Format:	Liquid
Concentration:	0.5 mg/mL
Buffer:	PBS with 0.09 % (W/V) sodium azide
Preservative:	Sodium azide
Precaution of Use:	This product contains sodium azide: a POISONOUS AND HAZARDOUS SUBSTANCE which should be handled by trained staff only.
Storage:	4 °C/-20 °C
Storage Comment:	Maintain refrigerated at 2-8 °C for up to 6 months. For long term storage store at -20 °C in small aliquots to prevent freeze-thaw cycles.
Expiry Date:	6 months



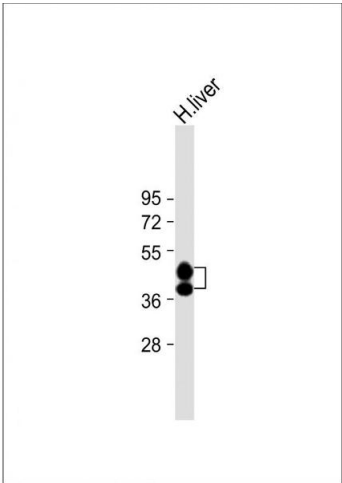
**Immunohistochemistry (Paraffin-embedded Sections)**

**Image 1.** (ABIN652875 and ABIN2842566) staining HP in human hepatocarcinoma sections by Immunohistochemistry (IHC-P - paraformaldehyde-fixed, paraffin-embedded sections). Tissue was fixed with formaldehyde and blocked with 3 % BSA for 0.5 hour at room temperature, antigen retrieval was by heat mediation with a citrate buffer (pH 6). Samples were incubated with primary antibody (1/25) for 1 hour at 37 °C. A undiluted biotinylated goat polyvalent antibody was used as the secondary antibody.



**Western Blotting**

**Image 2.** Western blot analysis of HP (arrow) using rabbit polyclonal HP Antibody (Center) (ABIN652875 and ABIN2842566). 293 cell lysates (2 µg/lane) either nontransfected (Lane 1) or transiently transfected with the HP gene (Lane 2).



**Western Blotting**

**Image 3.** Anti-HP Antibody (Center) at 1:8000 dilution + Human liver lysate Lysates/proteins at 20 µg per lane. Secondary Goat Anti-Rabbit IgG, (H+L), Peroxidase conjugated at 1/10000 dilution. Predicted band size : 45, 38 kDa Blocking/Dilution buffer: 5 % NFDM/TBST.

Please check the [product details page](#) for more images. Overall 4 images are available for ABIN652875.