

Datasheet for ABIN652880
anti-DGCR8 antibody (AA 439-466)[Go to Product page](#)

2 Images

Overview

Quantity:	400 µL
Target:	DGCR8
Binding Specificity:	AA 439-466
Reactivity:	Human
Host:	Rabbit
Clonality:	Polyclonal
Conjugate:	This DGCR8 antibody is un-conjugated
Application:	Western Blotting (WB), Flow Cytometry (FACS)

Product Details

Immunogen:	This DGCR8 antibody is generated from rabbits immunized with a KLH conjugated synthetic peptide between 439-466 amino acids from the Central region of human DGCR8.
Clone:	RB21435
Isotype:	Ig Fraction
Predicted Reactivity:	M
Purification:	This antibody is purified through a protein A column, followed by peptide affinity purification.

Target Details

Target:	DGCR8
Alternative Name:	DGCR8 (DGCR8 Products)

Target Details

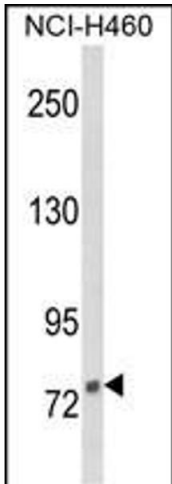
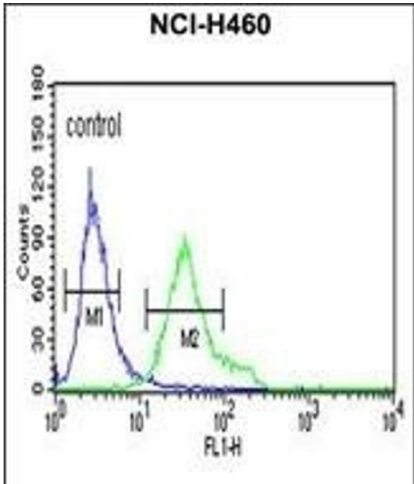
Background:	MicroRNAs (miRNA) are a recently discovered family of short non-protein-coding RNAs that negatively regulate gene expression. Recent studies of miRNAs highlight a requirement for cell viability. Post-transcriptional silencing of target genes by miRNAs occurs either by targeting specific cleavage of homologous mRNAs, or by targeting specific inhibition of protein synthesis.
Molecular Weight:	86045
Gene ID:	54487
NCBI Accession:	NP_001177255 , NP_073557
UniProt:	Q8WYQ5
Pathways:	Regulatory RNA Pathways

Application Details

Application Notes:	WB: 1:1000. FC: 1:10~50
Restrictions:	For Research Use only

Handling

Format:	Liquid
Buffer:	Purified polyclonal antibody supplied in PBS with 0.09 % (W/V) sodium azide.
Preservative:	Sodium azide
Precaution of Use:	This product contains Sodium azide: a POISONOUS AND HAZARDOUS SUBSTANCE which should be handled by trained staff only.
Storage:	4 °C, -20 °C
Storage Comment:	Maintain refrigerated at 2-8 °C for up to 6 months. For long term storage store at -20 °C in small aliquots to prevent freeze-thaw cycles.
Expiry Date:	6 months



Flow Cytometry

Image 1. DGCR8 Antibody (Center) (ABIN652880 and ABIN2842569) flow cytometric analysis of NCI- cells (right histogram) compared to a negative control cell (left histogram).FITC-conjugated goat-anti-rabbit secondary antibodies were used for the analysis.

Western Blotting

Image 2. Western blot analysis of DGCR8 Antibody (Center) (ABIN652880 and ABIN2842569) in NCI- cell line lysates (35 µg/lane). DGCR8 (arrow) was detected using the purified Pab.