

Datasheet for ABIN652885
anti-P5CS antibody (AA 176-205)

3 Images

[Go to Product page](#)

Overview

Quantity:	400 µL
Target:	P5CS (ALDH18A1)
Binding Specificity:	AA 176-205
Reactivity:	Human
Host:	Rabbit
Clonality:	Polyclonal
Conjugate:	This P5CS antibody is un-conjugated
Application:	Western Blotting (WB), Flow Cytometry (FACS), Immunohistochemistry (Paraffin-embedded Sections) (IHC (p))

Product Details

Immunogen:	This ALDH18A1 antibody is generated from rabbits immunized with a KLH conjugated synthetic peptide between 176-205 amino acids from the Central region of human ALDH18A1.
Clone:	RB21608
Isotype:	Ig Fraction
Predicted Reactivity:	M
Purification:	This antibody is purified through a protein A column, followed by peptide affinity purification.

Target Details

Target:	P5CS (ALDH18A1)
---------	-----------------

Target Details

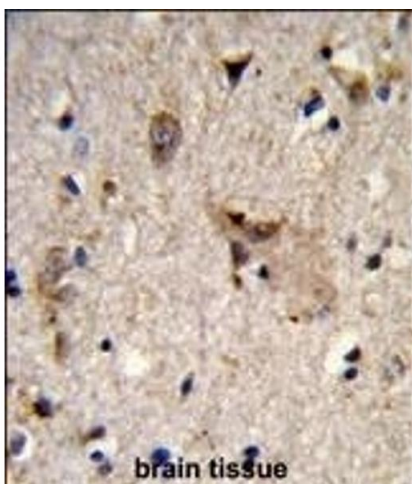
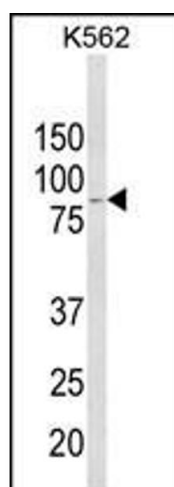
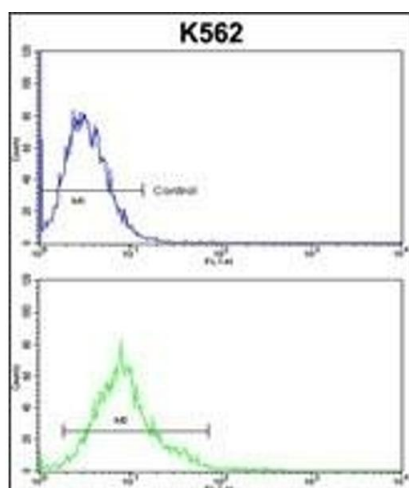
Alternative Name:	ALDH18A1 (ALDH18A1 Products)
Background:	ALDH18A1 is a member of the aldehyde dehydrogenase family and encodes a bifunctional ATP- and NADPH-dependent mitochondrial enzyme with both gamma-glutamyl kinase and gamma-glutamyl phosphate reductase activities. The encoded protein catalyzes the reduction of glutamate to delta1-pyrroline-5-carboxylate, a critical step in the de novo biosynthesis of proline, ornithine and arginine.
Molecular Weight:	87302
Gene ID:	5832
NCBI Accession:	NP_001017423 , NP_002851
UniProt:	P54886

Application Details

Application Notes:	WB: 1:1000. IHC-P: 1:50~100. FC: 1:10~50
Restrictions:	For Research Use only

Handling

Format:	Liquid
Buffer:	Purified polyclonal antibody supplied in PBS with 0.09 % (W/V) sodium azide.
Preservative:	Sodium azide
Precaution of Use:	This product contains Sodium azide: a POISONOUS AND HAZARDOUS SUBSTANCE which should be handled by trained staff only.
Storage:	4 °C, -20 °C
Storage Comment:	Maintain refrigerated at 2-8 °C for up to 6 months. For long term storage store at -20 °C in small aliquots to prevent freeze-thaw cycles.
Expiry Date:	6 months



Flow Cytometry

Image 1. ALDH18A1 Antibody (Center) (ABIN652885 and ABIN2842572) flow cytometric analysis of k562 cells (bottom histogram) compared to a negative control cell (top histogram). FITC-conjugated goat-anti-rabbit secondary antibodies were used for the analysis.

Western Blotting

Image 2. Western blot analysis of ALDH18A1 Antibody (Center) (ABIN652885 and ABIN2842572) in K562 cell line lysates (35 µg/lane). ALDH18A1 (arrow) was detected using the purified Pab.

Immunohistochemistry (Paraffin-embedded Sections)

Image 3. Formalin-fixed and paraffin-embedded human brain tissue reacted with ALDH18A1 Antibody (Center), which was peroxidase-conjugated to the secondary antibody, followed by DAB staining. This data demonstrates the use of this antibody for immunohistochemistry, clinical relevance has not been evaluated.