

Datasheet for ABIN652887
anti-INSIG1 antibody (N-Term)

3 Images

[Go to Product page](#)

Overview

Quantity:	400 µL
Target:	INSIG1
Binding Specificity:	AA 36-63, N-Term
Reactivity:	Human
Host:	Rabbit
Clonality:	Polyclonal
Conjugate:	This INSIG1 antibody is un-conjugated
Application:	Western Blotting (WB), Flow Cytometry (FACS), Immunohistochemistry (Paraffin-embedded Sections) (IHC (p))

Product Details

Immunogen:	This INSIG1 antibody is generated from rabbits immunized with a KLH conjugated synthetic peptide between 36-63 amino acids from the N-terminal region of human INSIG1.
Clone:	RB21689
Isotype:	Ig Fraction
Purification:	This antibody is purified through a protein A column, followed by peptide affinity purification.

Target Details

Target:	INSIG1
Alternative Name:	INSIG1 (INSIG1 Products)

Target Details

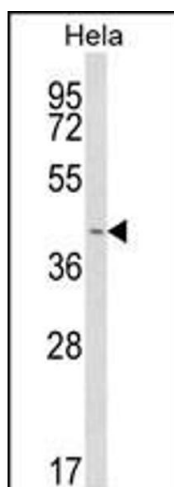
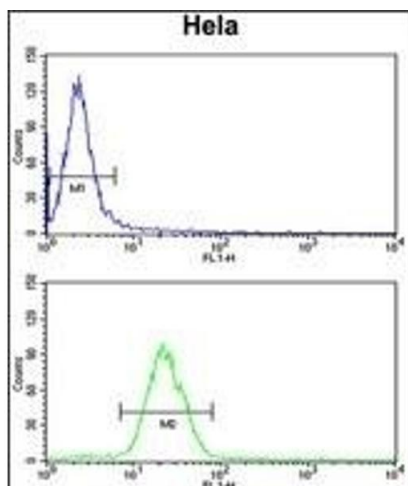
Background:	INSIG1 is an insulin-induced protein. This protein encodes an endoplasmic reticulum (ER) membrane protein that plays a critical role in regulating cholesterol concentrations in cells. This protein binds to the sterol-sensing domains of SREBP cleavage-activating protein (SCAP) and HMG CoA reductase, and is essential for the sterol-mediated trafficking of the two proteins.
Molecular Weight:	29987
Gene ID:	3638
NCBI Accession:	NP_005533 , NP_938150 , NP_938151
UniProt:	O15503
Pathways:	ER-Nucleus Signaling

Application Details

Application Notes:	WB: 1:1000. IHC-P: 1:50~100. FC: 1:10~50
Restrictions:	For Research Use only

Handling

Format:	Liquid
Buffer:	Purified polyclonal antibody supplied in PBS with 0.09 % (W/V) sodium azide.
Preservative:	Sodium azide
Precaution of Use:	This product contains Sodium azide: a POISONOUS AND HAZARDOUS SUBSTANCE which should be handled by trained staff only.
Storage:	4 °C,-20 °C
Storage Comment:	Maintain refrigerated at 2-8 °C for up to 6 months. For long term storage store at -20 °C in small aliquots to prevent freeze-thaw cycles.
Expiry Date:	6 months



Flow Cytometry

Image 1. INSIG1 Antibody (N-term) (ABIN652887 and ABIN2842574) flow cytometry analysis of HeLa cells (bottom histogram) compared to a negative control cell (top histogram). FITC-conjugated goat-anti-rabbit secondary antibodies were used for the analysis.

Western Blotting

Image 2. Western blot analysis of INSIG1 Antibody (N-term) (ABIN652887 and ABIN2842574) in HeLa cell line lysates (35 µg/lane). INSIG1 (arrow) was detected using the purified Pab.

Immunohistochemistry (Paraffin-embedded Sections)

Image 3. INSIG1 Antibody (N-term) (ABIN652887 and ABIN2842574) immunohistochemistry analysis in formalin fixed and paraffin embedded human prostate carcinoma followed by peroxidase conjugation of the secondary antibody and DAB staining. This data demonstrates the use of the INSIG1 Antibody (N-term) for immunohistochemistry. Clinical relevance has not been evaluated.