



[Go to Product page](#)

Datasheet for ABIN652892
anti-ANGEL1 antibody (C-Term)

3 Images

Overview

Quantity:	400 µL
Target:	ANGEL1
Binding Specificity:	AA 597-624, C-Term
Reactivity:	Human, Mouse
Host:	Rabbit
Clonality:	Polyclonal
Conjugate:	This ANGEL1 antibody is un-conjugated
Application:	Western Blotting (WB), Immunohistochemistry (Paraffin-embedded Sections) (IHC (p)), Flow Cytometry (FACS)

Product Details

Immunogen:	This ANGEL1 antibody is generated from rabbits immunized with a KLH conjugated synthetic peptide between 597-624 amino acids from the C-terminal region of human ANGEL1.
Clone:	RB22075
Isotype:	Ig Fraction
Purification:	This antibody is purified through a protein A column, followed by peptide affinity purification.

Target Details

Target:	ANGEL1
Alternative Name:	ANGEL1 (ANGEL1 Products)

Target Details

Molecular Weight:	75276
Gene ID:	23357
NCBI Accession:	NP_056120
UniProt:	Q9UNK9

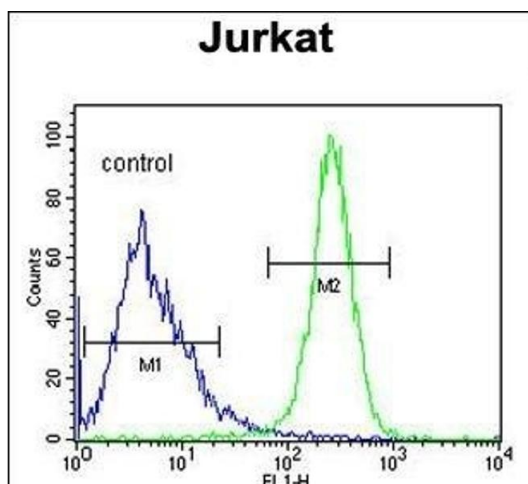
Application Details

Application Notes:	WB: 1:1000. IHC-P: 1:50~100. FC: 1:10~50
Restrictions:	For Research Use only

Handling

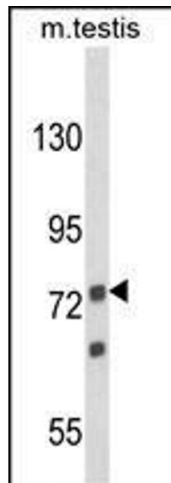
Format:	Liquid
Buffer:	Purified polyclonal antibody supplied in PBS with 0.09 % (W/V) sodium azide.
Preservative:	Sodium azide
Precaution of Use:	This product contains Sodium azide: a POISONOUS AND HAZARDOUS SUBSTANCE which should be handled by trained staff only.
Storage:	4 °C,-20 °C
Storage Comment:	Maintain refrigerated at 2-8 °C for up to 6 months. For long term storage store at -20 °C in small aliquots to prevent freeze-thaw cycles.
Expiry Date:	6 months

Images



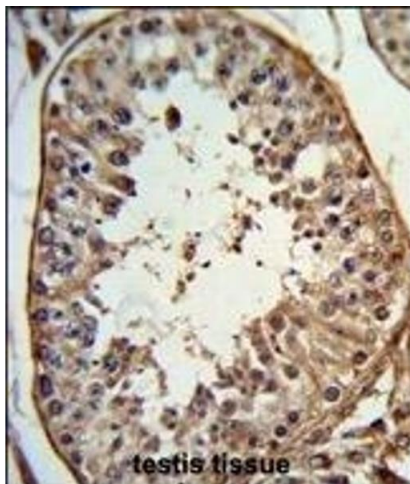
Flow Cytometry

Image 1. ANGEL1 Antibody (C-term) (ABIN652892 and ABIN2842577) flow cytometric analysis of Jurkat cells (right histogram) compared to a negative control cell (left histogram). FITC-conjugated goat-anti-rabbit secondary antibodies were used for the analysis.



Western Blotting

Image 2. Western blot analysis of ANGEL1 Antibody (C-term) (ABIN652892 and ABIN2842577) in mouse testis tissue lysates (35 µg/lane). ANGEL1 (arrow) was detected using the purified Pab.



Immunohistochemistry (Paraffin-embedded Sections)

Image 3. Formalin-fixed and paraffin-embedded human testis tissue reacted with ANGEL1 Antibody (C-term), which was peroxidase-conjugated to the secondary antibody, followed by DAB staining. This data demonstrates the use of this antibody for immunohistochemistry, clinical relevance has not been evaluated.