

Datasheet for ABIN652899 **anti-ZFP36 antibody (AA 116-142)**



[Go to Product page](#)

1 Image

Overview

Quantity:	400 µL
Target:	ZFP36
Binding Specificity:	AA 116-142
Reactivity:	Human
Host:	Rabbit
Clonality:	Polyclonal
Conjugate:	This ZFP36 antibody is un-conjugated
Application:	Western Blotting (WB)

Product Details

Immunogen:	This ZFP36 antibody is generated from rabbits immunized with a KLH conjugated synthetic peptide between 116-142 amino acids from the Central region of human ZFP36.
Clone:	RB22379
Isotype:	Ig Fraction
Predicted Reactivity:	M, Rat
Purification:	This antibody is purified through a protein A column, followed by peptide affinity purification.

Target Details

Target:	ZFP36
Alternative Name:	ZFP36 (ZFP36 Products)

Target Details

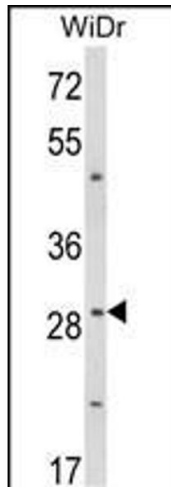
Background:	ZFP36 is probable regulatory protein with a novel zinc finger structure involved in regulating the response to growth factors. Has been experimentally shown to be able to bind zinc.
Molecular Weight:	34003
Gene ID:	7538
NCBI Accession:	NP_003398
UniProt:	P26651

Application Details

Application Notes:	WB: 1:1000
Restrictions:	For Research Use only

Handling

Format:	Liquid
Buffer:	Purified polyclonal antibody supplied in PBS with 0.09 % (W/V) sodium azide.
Preservative:	Sodium azide
Precaution of Use:	This product contains Sodium azide: a POISONOUS AND HAZARDOUS SUBSTANCE which should be handled by trained staff only.
Storage:	4 °C,-20 °C
Storage Comment:	Maintain refrigerated at 2-8 °C for up to 6 months. For long term storage store at -20 °C in small aliquots to prevent freeze-thaw cycles.
Expiry Date:	6 months



Western Blotting

Image 1. Western blot analysis of ZFP36 Antibody (Center) (ABIN652899 and ABIN2842580) in WiDr cell line lysates (35 µg/lane). ZFP36 (arrow) was detected using the purified Pab.