



Datasheet for ABIN652903 anti-FIL1h antibody (N-Term)



[Go to Product page](#)

2 Images

Overview

Quantity:	400 µL
Target:	FIL1h
Binding Specificity:	AA 1-30, N-Term
Reactivity:	Human
Host:	Rabbit
Clonality:	Polyclonal
Conjugate:	This FIL1h antibody is un-conjugated
Application:	Western Blotting (WB), Flow Cytometry (FACS)

Product Details

Immunogen:	This IL1F8 antibody is generated from rabbits immunized with a KLH conjugated synthetic peptide between 1-30 amino acids from the N-terminal region of human IL1F8.
Clone:	RB22631
Isotype:	Ig Fraction
Purification:	This antibody is purified through a protein A column, followed by peptide affinity purification.

Target Details

Target:	FIL1h
Alternative Name:	IL1F8 (FIL1h Products)
Background:	The protein is a member of the interleukin 1 cytokine family. Protein structure modeling

Target Details

indicated that this cytokine may contain a 12-stranded beta-trefoil structure that is conserved between IL1A (IL-A alpha) and IL1B (IL-1 beta).

Molecular Weight: 18522

Gene ID: 27177

NCBI Accession: [NP_055253](#), [NP_775270](#)

UniProt: [Q9NZH7](#)

Application Details

Application Notes: WB: 1:1000. FC: 1:10~50

Restrictions: For Research Use only

Handling

Format: Liquid

Buffer: Purified polyclonal antibody supplied in PBS with 0.09 % (W/V) sodium azide.

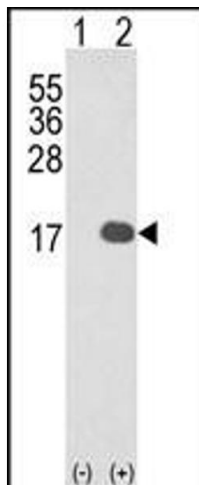
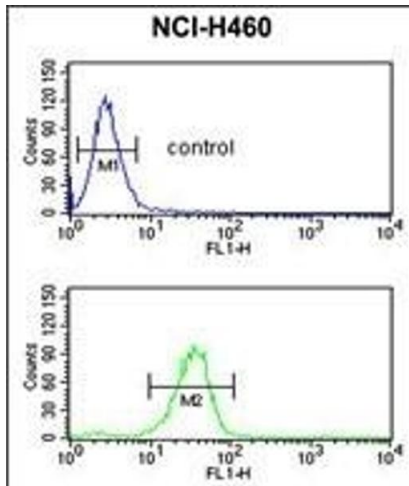
Preservative: Sodium azide

Precaution of Use: This product contains Sodium azide: a POISONOUS AND HAZARDOUS SUBSTANCE which should be handled by trained staff only.

Storage: 4 °C,-20 °C

Storage Comment: Maintain refrigerated at 2-8 °C for up to 6 months. For long term storage store at -20 °C in small aliquots to prevent freeze-thaw cycles.

Expiry Date: 6 months



Flow Cytometry

Image 1. IL1F8 Antibody (N-term) (ABIN652903 and ABIN2842583) flow cytometric analysis of NCI- cells (bottom histogram) compared to a negative control cell (top histogram). FITC-conjugated goat-anti-rabbit secondary antibodies were used for the analysis.

Western Blotting

Image 2. Western blot analysis of IL1F8 (arrow) using rabbit polyclonal IL1F8 Antibody (N-term) (ABIN652903 and ABIN2842583). 293 cell lysates (2 µg/lane) either nontransfected (Lane 1) or transiently transfected with the IL1F8 gene (Lane 2).