

Datasheet for ABIN652906
anti-PIN1 antibody (AA 30-56)

5 Images

[Go to Product page](#)

Overview

Quantity:	400 µL
Target:	PIN1
Binding Specificity:	AA 30-56
Reactivity:	Human
Host:	Rabbit
Clonality:	Polyclonal
Conjugate:	This PIN1 antibody is un-conjugated
Application:	Western Blotting (WB), Immunofluorescence (IF), Flow Cytometry (FACS), Immunohistochemistry (Paraffin-embedded Sections) (IHC (p))

Product Details

Immunogen:	This PIN1 antibody is generated from rabbits immunized with a KLH conjugated synthetic peptide between 30-56 amino acids from the Central region of human PIN1.
Clone:	RB22881
Isotype:	Ig Fraction
Predicted Reactivity:	Pr
Purification:	This antibody is purified through a protein A column, followed by peptide affinity purification.

Target Details

Target:	PIN1
---------	------

Target Details

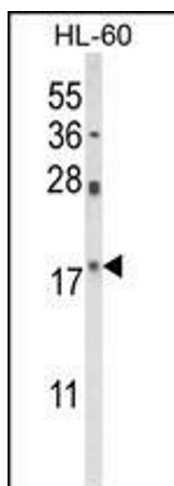
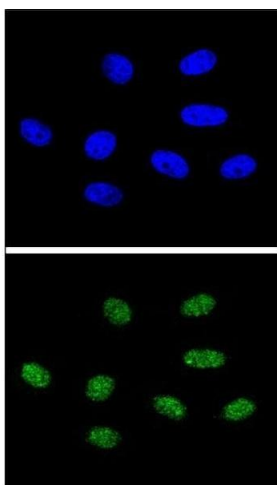
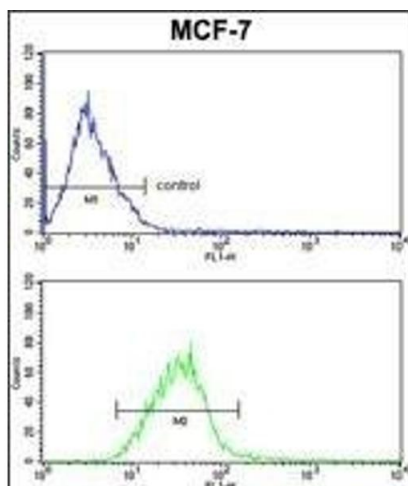
Alternative Name:	PIN1 (PIN1 Products)
Background:	PIN1 is an essential nuclear peptidylprolyl cis-trans isomerase (PPIase, EC 5.2.1.8) involved in regulation of mitosis.
Molecular Weight:	18243
Gene ID:	5300
NCBI Accession:	NP_006212
UniProt:	Q13526

Application Details

Application Notes:	IF: 1:10~50. WB: 1:1000. WB: 1:1000. IHC-P: 1:50~100. FC: 1:10~50
Restrictions:	For Research Use only

Handling

Format:	Liquid
Buffer:	Purified polyclonal antibody supplied in PBS with 0.09 % (W/V) sodium azide.
Preservative:	Sodium azide
Precaution of Use:	This product contains Sodium azide: a POISONOUS AND HAZARDOUS SUBSTANCE which should be handled by trained staff only.
Storage:	4 °C, -20 °C
Storage Comment:	Maintain refrigerated at 2-8 °C for up to 6 months. For long term storage store at -20 °C in small aliquots to prevent freeze-thaw cycles.
Expiry Date:	6 months



Flow Cytometry

Image 1. PIN1 Antibody (Center) (ABIN652906 and ABIN2842584) FC analysis of MCF-7 cells (bottom histogram) compared to a negative control cell (top histogram). FITC-conjugated goat-anti-rabbit secondary antibodies were used for the analysis.

Immunofluorescence

Image 2. Confocal immunofluorescent analysis of PIN1 Antibody (Center) (ABIN652906 and ABIN2842584) with 293 cell followed by Alexa Fluor® 488-conjugated goat anti-rabbit IgG (green). DAPI was used to stain the cell nuclear (blue).

Western Blotting

Image 3. Western blot analysis of PIN1 Antibody (Center) (ABIN652906 and ABIN2842584) in HL-60 cell line lysates (35 µg/lane). PIN1 (arrow) was detected using the purified Pab.

Please check the [product details page](#) for more images. Overall 5 images are available for ABIN652906.