

Datasheet for ABIN652907
anti-LDLR antibody (AA 391-419)[Go to Product page](#)

2 Images

Overview

Quantity:	400 µL
Target:	LDLR
Binding Specificity:	AA 391-419
Reactivity:	Human, Mouse
Host:	Rabbit
Clonality:	Polyclonal
Conjugate:	This LDLR antibody is un-conjugated
Application:	Western Blotting (WB), Flow Cytometry (FACS)

Product Details

Immunogen:	This LDLR antibody is generated from rabbits immunized with a KLH conjugated synthetic peptide between 391-419 amino acids of human LDLR.
Clone:	RB22886
Isotype:	Ig Fraction
Predicted Reactivity:	X, B, Ha, Pig, Rb, Rat
Purification:	This antibody is purified through a protein A column, followed by peptide affinity purification.

Target Details

Target:	LDLR
Alternative Name:	LDLR (LDLR Products)

Target Details

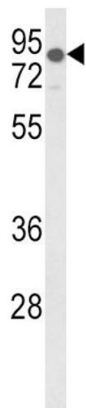
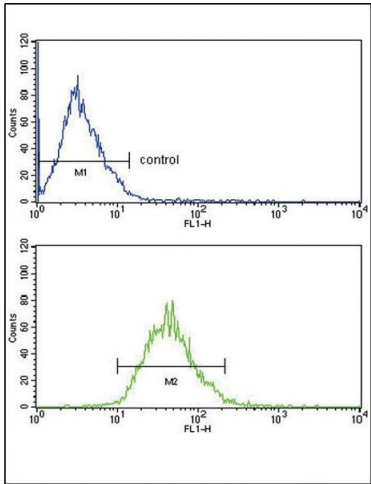
Background:	The low density lipoprotein receptor (LDLR) gene family consists of cell surface proteins involved in receptor-mediated endocytosis of specific ligands. Low density lipoprotein (LDL) is normally bound at the cell membrane and taken into the cell ending up in lysosomes where the protein is degraded and the cholesterol is made available for repression of microsomal enzyme 3-hydroxy-3-methylglutaryl coenzyme A (HMG CoA) reductase, the rate-limiting step in cholesterol synthesis. At the same time, a reciprocal stimulation of cholesterol ester synthesis takes place.
Molecular Weight:	95376
Gene ID:	3949
NCBI Accession:	NP_000518 , NP_001182727 , NP_001182728 , NP_001182729 , NP_001182732
UniProt:	P01130
Pathways:	Hepatitis C , Lipid Metabolism

Application Details

Application Notes:	WB: 1:1000. FC: 1:10~50
Restrictions:	For Research Use only

Handling

Format:	Liquid
Buffer:	Purified polyclonal antibody supplied in PBS with 0.09 % (W/V) sodium azide.
Preservative:	Sodium azide
Precaution of Use:	This product contains Sodium azide: a POISONOUS AND HAZARDOUS SUBSTANCE which should be handled by trained staff only.
Storage:	4 °C,-20 °C
Storage Comment:	Maintain refrigerated at 2-8 °C for up to 6 months. For long term storage store at -20 °C in small aliquots to prevent freeze-thaw cycles.
Expiry Date:	6 months



Flow Cytometry

Image 1. LDLR Antibody (Center) (ABIN652907 and ABIN2842585) FC analysis of MCF-7 cells (bottom histogram) compared to a negative control cell (top histogram). FITC-conjugated goat-anti-rabbit secondary antibodies were used for the analysis.

Western Blotting

Image 2. Western blot analysis of LDLR Antibody (Center) (ABIN652907 and ABIN2842585) in mouse lung tissue lysates (35 µg/lane). LDLR (arrow) was detected using the purified Pab.