



[Go to Product page](#)

Datasheet for ABIN652911 anti-ELAVL1 antibody

7 Images

Overview

Quantity:	400 µL
Target:	ELAVL1
Reactivity:	Human, Mouse
Host:	Rabbit
Clonality:	Polyclonal
Conjugate:	This ELAVL1 antibody is un-conjugated
Application:	Western Blotting (WB), Immunohistochemistry (Paraffin-embedded Sections) (IHC (p)), Flow Cytometry (FACS)

Product Details

Immunogen:	This ELAVL1 antibody is generated from rabbits immunized with human ELAVL1 recombinant protein.
Clone:	RB22938
Isotype:	Ig Fraction
Purification:	This antibody is purified through a protein A column, followed by peptide affinity purification.

Target Details

Target:	ELAVL1
Alternative Name:	ELAVL1 (ELAVL1 Products)
Background:	ELAVL1 is involved in 3'-UTR ARE-mediated MYC stabilization. It binds avidly to the AU-rich element in FOS and IL3/interleukin-3 mRNAs. In the case of the FOS AU-rich element, HUR

Target Details

binds to a core element of 27 nucleotides that contain AUUUA, AUUUUA and AUUUUUA motifs.

Molecular Weight: 36092

Gene ID: 1994

NCBI Accession: [NP_001410](#)

UniProt: [Q15717](#)

Pathways: [AMPK Signaling](#)

Application Details

Application Notes: WB: 1:1000. WB: 1:2000. IHC-P: 1:50~100. IHC-P: 1:100. IHC-P: 1:25. FC: 1:25. FC: 1:25

Restrictions: For Research Use only

Handling

Format: Liquid

Buffer: Purified polyclonal antibody supplied in PBS with 0.09 % (W/V) sodium azide.

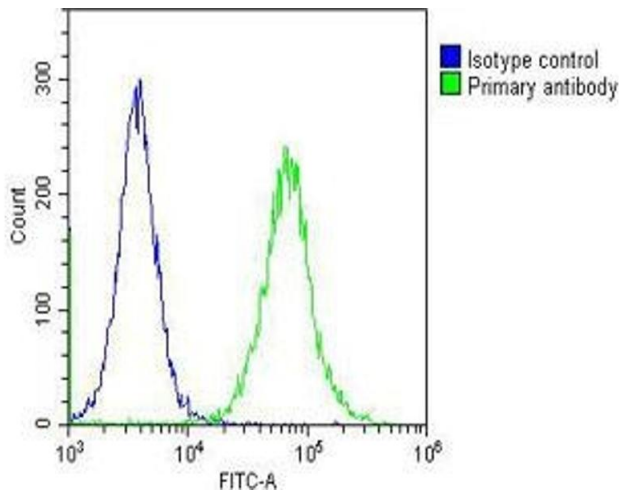
Preservative: Sodium azide

Precaution of Use: This product contains Sodium azide: a POISONOUS AND HAZARDOUS SUBSTANCE which should be handled by trained staff only.

Storage: 4 °C,-20 °C

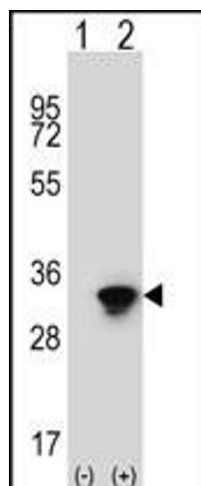
Storage Comment: Maintain refrigerated at 2-8 °C for up to 6 months. For long term storage store at -20 °C in small aliquots to prevent freeze-thaw cycles.

Expiry Date: 6 months



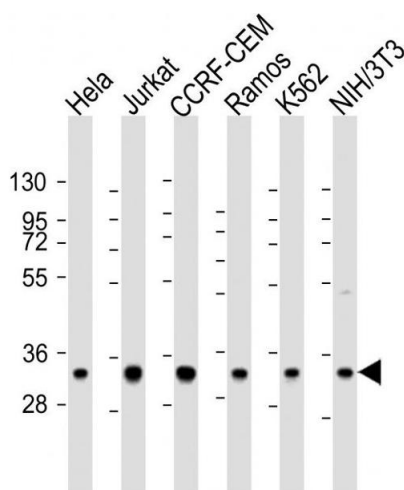
Flow Cytometry

Image 1. Overlay histogram showing HeLa cells stained with (ABIN652911 and ABIN2842587) (green line). The cells were fixed with 2 % paraformaldehyde (10 min) and then permeabilized with 90 % methanol for 10 min. The cells were then incubated in 2 % bovine serum albumin to block non-specific protein-protein interactions followed by the antibody ((ABIN652911 and ABIN2842587), 1:25 dilution) for 60 min at 37 °C. The secondary antibody used was Goat-Anti-Rabbit IgG, DyLight® 488 Conjugated Highly Cross-Adsorbed(OH191631) at 1/200 dilution for 40 min at 37 °C. Isotype control antibody (blue line) was rabbit IgG (1 µg/1x10⁶ cells) used under the same conditions. Acquisition of >10,000 events was performed.



Western Blotting

Image 2. Western blot analysis of ELAVL1 (arrow) using rabbit polyclonal ELAVL1 Antibody (ABIN652911 and ABIN2842587). 293 cell lysates (2 µg/lane) either nontransfected (Lane 1) or transiently transfected (Lane 2) with the ELAVL1 gene.



Western Blotting

Image 3. All lanes : Anti-ELAVL1 Antibody at 1:2000 dilution
 Lane 1: HeLa whole cell lysate Lane 2: Jurkat whole cell lysate Lane 3: CCRF-CEM whole cell lysate Lane 4: Ramos whole cell lysate Lane 5: K562 whole cell lysate Lane 6: NIH/3T3 whole cell lysate Lysates/proteins at 20 µg per lane. Secondary Goat Anti-Rabbit IgG, (H+L), Peroxidase conjugated at 1/10000 dilution. Predicted band size : 36 kDa
 Blocking/Dilution buffer: 5 % NFDN/TBST.

Please check the [product details page](#) for more images. Overall 7 images are available for ABIN652911.