



[Go to Product page](#)

Datasheet for ABIN652914
anti-CDC37 antibody (AA 116-144)

4 Images

Overview

| | |
|----------------------|---|
| Quantity: | 400 µL |
| Target: | CDC37 |
| Binding Specificity: | AA 116-144 |
| Reactivity: | Human, Rat |
| Host: | Rabbit |
| Clonality: | Polyclonal |
| Conjugate: | This CDC37 antibody is un-conjugated |
| Application: | Western Blotting (WB), Flow Cytometry (FACS), Immunohistochemistry (Paraffin-embedded Sections) (IHC (p)) |

Product Details

| | |
|---------------|---|
| Immunogen: | This CDC37 antibody is generated from rabbits immunized with a KLH conjugated synthetic peptide between 116-144 amino acids from the Central region of human CDC37. |
| Clone: | RB22954 |
| Isotype: | Ig Fraction |
| Purification: | This antibody is purified through a protein A column, followed by peptide affinity purification. |

Target Details

| | |
|-------------------|--|
| Target: | CDC37 |
| Alternative Name: | CDC37 (CDC37 Products) |

Target Details

Background: CDC37 is a cell division cycle control protein of *Sacchomyces cerevisiae*. This protein is a molecular chaperone with specific function in cell signal transduction. It has been shown to form complex with Hsp90 and a variety of protein kinases including CDK4, CDK6, SRC, RAF-1, MOK, as well as eIF2 alpha kinases. It is thought to play a critical role in directing Hsp90 to its target kinases.

Molecular Weight: 44468

Gene ID: 11140

NCBI Accession: [NP_008996](#)

UniProt: [Q16543](#)

Application Details

Application Notes: WB: 1:1000. WB: 1:2000. IHC-P: 1:50~100. FC: 1:10~50

Restrictions: For Research Use only

Handling

Format: Liquid

Buffer: Purified polyclonal antibody supplied in PBS with 0.09 % (W/V) sodium azide.

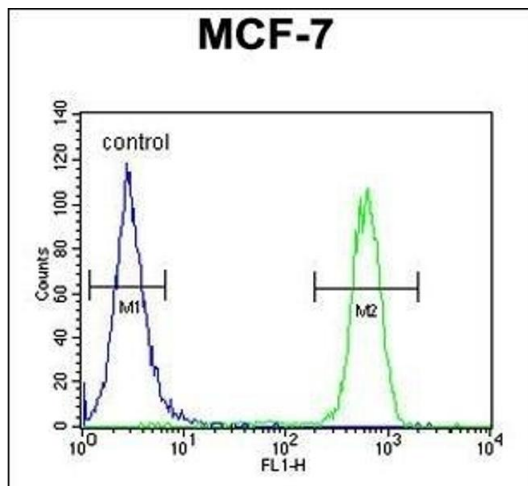
Preservative: Sodium azide

Precaution of Use: This product contains Sodium azide: a POISONOUS AND HAZARDOUS SUBSTANCE which should be handled by trained staff only.

Storage: 4 °C,-20 °C

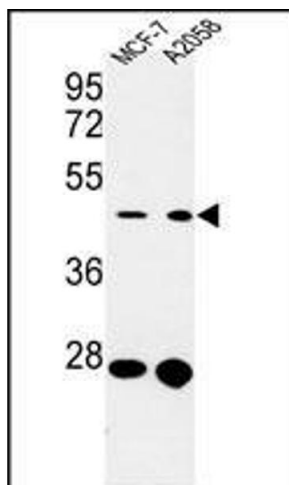
Storage Comment: Maintain refrigerated at 2-8 °C for up to 6 months. For long term storage store at -20 °C in small aliquots to prevent freeze-thaw cycles.

Expiry Date: 6 months



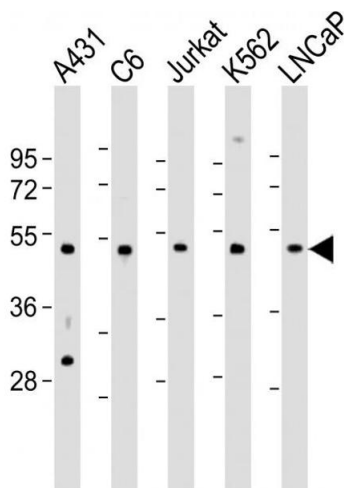
Flow Cytometry

Image 1. CDC37 Antibody (Center) (ABIN652914 and ABIN2842588) flow cytometric analysis of MCF-7 cells (right histogram) compared to a negative control cell (left histogram). FITC-conjugated goat-anti-rabbit secondary antibodies were used for the analysis.



Western Blotting

Image 2. Western blot analysis of CDC37 Antibody (Center) (ABIN652914 and ABIN2842588) in MCF-7, cell line lysates (35 µg/lane). CDC37 (arrow) was detected using the purified Pab.



Western Blotting

Image 3. All lanes : Anti-CDC37 Antibody (Center) at 1:2000 dilution Lane 1: A431 whole cell lysate Lane 2: C6 whole cell lysate Lane 3: Jurkat whole cell lysate Lane 4: K562 whole cell lysate Lane 5: LNCaP whole cell lysate Lysates/proteins at 20 µg per lane. Secondary Goat Anti-Rabbit IgG, (H+L), Peroxidase conjugated at 1/10000 dilution. Predicted band size : 44 kDa Blocking/Dilution buffer: 5 % NFDm/TBST.

Please check the [product details page](#) for more images. Overall 4 images are available for ABIN652914.