

Datasheet for ABIN652928
anti-SKA3 antibody (AA 226-253)

3 Images

[Go to Product page](#)

Overview

Quantity:	400 µL
Target:	SKA3
Binding Specificity:	AA 226-253
Reactivity:	Human
Host:	Rabbit
Clonality:	Polyclonal
Conjugate:	This SKA3 antibody is un-conjugated
Application:	Western Blotting (WB), Immunohistochemistry (Paraffin-embedded Sections) (IHC (p)), Flow Cytometry (FACS)

Product Details

Immunogen:	This C13orf3 antibody is generated from rabbits immunized with a KLH conjugated synthetic peptide between 226-253 amino acids from the Central region of human C13orf3.
Clone:	RB23058
Isotype:	IgG
Purification:	This antibody is purified through a protein A column, followed by peptide affinity purification.

Target Details

Target:	SKA3
Alternative Name:	C13orf3 (SKA3 Products)

Target Details

Background: Component of the SKA1 complex, a microtubule-binding subcomplex of the outer kinetochore that is essential for proper chromosome segregation. The SKA1 complex is a direct component of the kinetochore-microtubule interface and directly associates with microtubules as oligomeric assemblies. The complex facilitates the processive movement of microspheres along a microtubule in a depolymerization-coupled manner. In the complex, it mediates the microtubule-stimulated oligomerization.

Molecular Weight: 46359

Gene ID: 221150

NCBI Accession: [NP_001159489](#), [NP_659498](#)

UniProt: [Q8IX90](#)

Application Details

Application Notes: WB: 1:1000. IHC-P: 1:50~100. FC: 1:10~50

Restrictions: For Research Use only

Handling

Format: Liquid

Buffer: Purified polyclonal antibody supplied in PBS with 0.09 % (W/V) sodium azide.

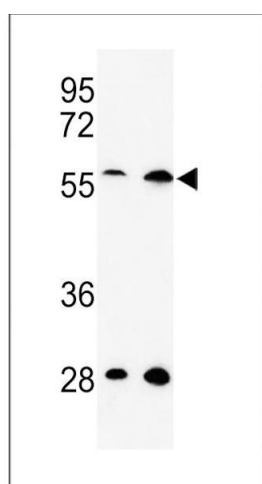
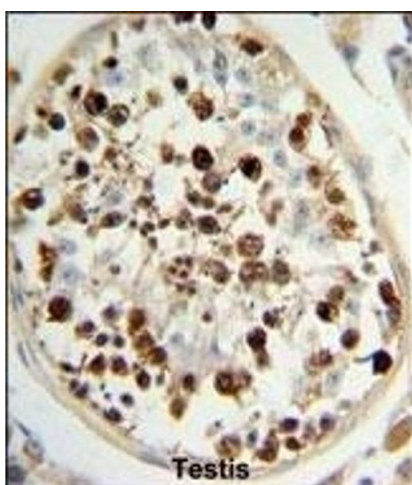
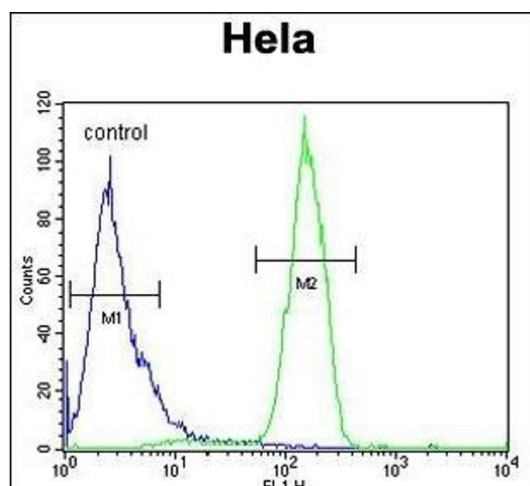
Preservative: Sodium azide

Precaution of Use: This product contains Sodium azide: a POISONOUS AND HAZARDOUS SUBSTANCE which should be handled by trained staff only.

Storage: 4 °C, -20 °C

Storage Comment: Maintain refrigerated at 2-8 °C for up to 6 months. For long term storage store at -20 °C in small aliquots to prevent freeze-thaw cycles.

Expiry Date: 6 months



Flow Cytometry

Image 1. C13orf3 Antibody (Center) (ABIN652928 and ABIN2842594) flow cytometric analysis of Hela cells (right histogram) compared to a negative control cell (left histogram). FITC-conjugated goat-anti-rabbit secondary antibodies were used for the analysis.

Immunohistochemistry (Paraffin-embedded Sections)

Image 2. C13orf3 Antibody (Center) (ABIN652928 and ABIN2842594) IHC analysis in formalin fixed and paraffin embedded human testis tissue followed by peroxidase conjugation of the secondary antibody and DAB staining. This data demonstrates the use of the C13orf3 Antibody (Center) for immunohistochemistry. Clinical relevance has not been evaluated.

Western Blotting

Image 3. Western blot analysis of C13orf3 Antibody (Center) (ABIN652928 and ABIN2842594) in Hela, 293 cell line lysates (35 μ g/lane). C13orf3 (arrow) was detected using the purified Pab.