

Datasheet for ABIN652930  
**anti-PPP1R36 antibody (N-Term)**[Go to Product page](#)

## 1 Image

## Overview

Quantity:	400 µL
Target:	PPP1R36
Binding Specificity:	AA 20-47, N-Term
Reactivity:	Human
Host:	Rabbit
Clonality:	Polyclonal
Conjugate:	This PPP1R36 antibody is un-conjugated
Application:	Western Blotting (WB)

## Product Details

Immunogen:	This C14orf50 antibody is generated from rabbits immunized with a KLH conjugated synthetic peptide between 20-47 amino acids from the N-terminal region of human C14orf50.
Clone:	RB23067
Isotype:	Ig Fraction
Purification:	This antibody is purified through a protein A column, followed by peptide affinity purification.

## Target Details

Target:	PPP1R36
Alternative Name:	C14orf50 ( <a href="#">PPP1R36 Products</a> )
Molecular Weight:	49440

### Target Details

Gene ID:	145376
NCBI Accession:	<a href="#">NP_758953</a>
UniProt:	<a href="#">Q96LQ0</a>

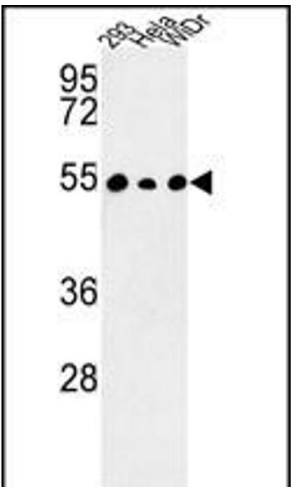
### Application Details

Application Notes:	WB: 1:1000
Restrictions:	For Research Use only

### Handling

Format:	Liquid
Buffer:	Purified polyclonal antibody supplied in PBS with 0.09 % (W/V) sodium azide.
Preservative:	Sodium azide
Precaution of Use:	This product contains Sodium azide: a POISONOUS AND HAZARDOUS SUBSTANCE which should be handled by trained staff only.
Storage:	4 °C,-20 °C
Storage Comment:	Maintain refrigerated at 2-8 °C for up to 6 months. For long term storage store at -20 °C in small aliquots to prevent freeze-thaw cycles.
Expiry Date:	6 months

### Images



#### Western Blotting

**Image 1.** Western blot analysis of C14orf50 Antibody (N-term) (ABIN652930 and ABIN2842596) in 293, Hela, WiDr cell line lysates (35 µg/lane). C14orf50 (arrow) was detected using the purified Pab.