



[Go to Product page](#)

Datasheet for ABIN652936  
**anti-DAB2 antibody (C-Term)**

3 Images

Overview

Quantity:	400 µL
Target:	DAB2
Binding Specificity:	AA 743-770, C-Term
Reactivity:	Human
Host:	Rabbit
Clonality:	Polyclonal
Conjugate:	This DAB2 antibody is un-conjugated
Application:	Western Blotting (WB), Flow Cytometry (FACS), Immunohistochemistry (Paraffin-embedded Sections) (IHC (p))

Product Details

Immunogen:	This DAB2 antibody is generated from rabbits immunized with a KLH conjugated synthetic peptide between 743-770 amino acids from the C-terminal region of human DAB2.
Clone:	RB23472
Isotype:	Ig Fraction
Purification:	This antibody is purified through a protein A column, followed by peptide affinity purification.

Target Details

Target:	DAB2
Alternative Name:	DAB2 ( <a href="#">DAB2 Products</a> )

## Target Details

---

Background:	DAB2 is the component of the CSF-1 signal transduction pathway.
Molecular Weight:	82448
Gene ID:	1601
NCBI Accession:	<a href="#">NP_001231800</a> , <a href="#">NP_001334</a>
UniProt:	<a href="#">P98082</a>
Pathways:	<a href="#">Intracellular Steroid Hormone Receptor Signaling Pathway</a> , <a href="#">Regulation of Intracellular Steroid Hormone Receptor Signaling</a> , <a href="#">Regulation of Hormone Metabolic Process</a> , <a href="#">Regulation of Hormone Biosynthetic Process</a>

## Application Details

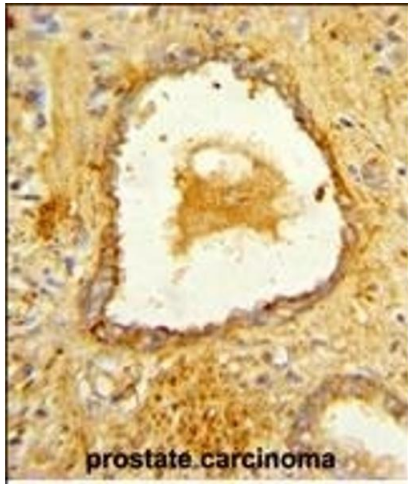
---

Application Notes:	WB: 1:1000. IHC-P: 1:50~100. FC: 1:10~50
Restrictions:	For Research Use only

## Handling

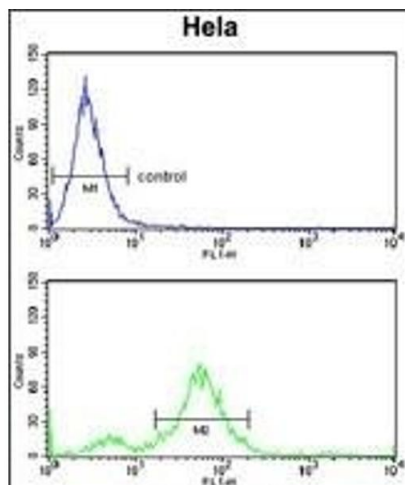
---

Format:	Liquid
Buffer:	Purified polyclonal antibody supplied in PBS with 0.09 % (W/V) sodium azide.
Preservative:	Sodium azide
Precaution of Use:	This product contains Sodium azide: a POISONOUS AND HAZARDOUS SUBSTANCE which should be handled by trained staff only.
Storage:	4 °C,-20 °C
Storage Comment:	Maintain refrigerated at 2-8 °C for up to 6 months. For long term storage store at -20 °C in small aliquots to prevent freeze-thaw cycles.
Expiry Date:	6 months



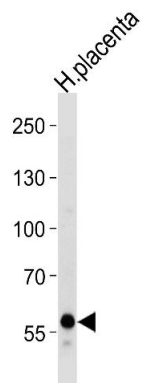
### Immunohistochemistry (Paraffin-embedded Sections)

**Image 1.** Formalin-fixed and paraffin-embedded human prostate carcinoma reacted with DAB2 Antibody (C-term), which was peroxidase-conjugated to the secondary antibody, followed by DAB staining. This data demonstrates the use of this antibody for immunohistochemistry, clinical relevance has not been evaluated.



### Flow Cytometry

**Image 2.** DAB2 Antibody (C-term) (ABIN652936 and ABIN2842598) flow cytometry analysis of HeLa cells (bottom histogram) compared to a negative control cell (top histogram). FITC-conjugated goat-anti-rabbit secondary antibodies were used for the analysis.



### Western Blotting

**Image 3.** Western blot analysis of lysate from human placenta tissue lysate, using DAB2 Antibody (C-term) (ABIN652936 and ABIN2842598). (ABIN652936 and ABIN2842598) was diluted at 1:1000 at each lane. A goat anti-rabbit IgG H&L(HRP) at 1:5000 dilution was used as the secondary antibody. Lysate at 35 µg per lane.