

Datasheet for ABIN652937
anti-CXorf22 antibody (AA 628-657)[Go to Product page](#)

2 Images

Overview

Quantity:	400 µL
Target:	CXorf22 (CHDC2)
Binding Specificity:	AA 628-657
Reactivity:	Human
Host:	Rabbit
Clonality:	Polyclonal
Conjugate:	This CXorf22 antibody is un-conjugated
Application:	Western Blotting (WB), Immunohistochemistry (Paraffin-embedded Sections) (IHC (p))

Product Details

Immunogen:	This CXorf22 antibody is generated from rabbits immunized with a KLH conjugated synthetic peptide between 628-657 amino acids from the Central region of human CXorf22.
Clone:	RB23522
Isotype:	Ig Fraction
Purification:	This antibody is purified through a protein A column, followed by peptide affinity purification.

Target Details

Target:	CXorf22 (CHDC2)
Alternative Name:	CXorf22 (CHDC2 Products)
Molecular Weight:	361625

Target Details

Gene ID: 170063

NCBI Accession: [NP_689845](#)

UniProt: [Q6ZTR5](#)

Application Details

Application Notes: WB: 1:1000. IHC-P: 1:50~100

Restrictions: For Research Use only

Handling

Format: Liquid

Buffer: Purified polyclonal antibody supplied in PBS with 0.09 % (W/V) sodium azide.

Preservative: Sodium azide

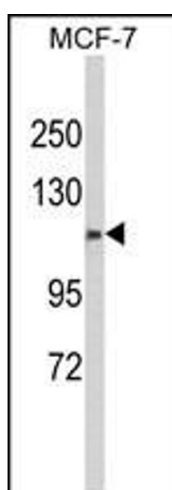
Precaution of Use: This product contains Sodium azide: a POISONOUS AND HAZARDOUS SUBSTANCE which should be handled by trained staff only.

Storage: 4 °C, -20 °C

Storage Comment: Maintain refrigerated at 2-8 °C for up to 6 months. For long term storage store at -20 °C in small aliquots to prevent freeze-thaw cycles.

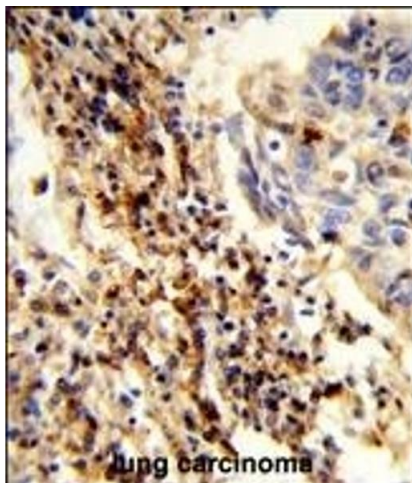
Expiry Date: 6 months

Images



Western Blotting

Image 1. Western blot analysis of CXorf22 Antibody (Center) (ABIN652937 and ABIN2842599) in MCF-7 cell line lysates (35 µg/lane). CXorf22 (arrow) was detected using the purified Pab.



Immunohistochemistry (Paraffin-embedded Sections)

Image 2. Formalin-fixed and paraffin-embedded human lung carcinoma reacted with CXorf22 Antibody (Center), which was peroxidase-conjugated to the secondary antibody, followed by DAB staining. This data demonstrates the use of this antibody for immunohistochemistry, clinical relevance has not been evaluated.