

Datasheet for ABIN652942
anti-JUP antibody (C-Term)

3 Images

[Go to Product page](#)

Overview

Quantity:	400 µL
Target:	JUP
Binding Specificity:	AA 636-663, C-Term
Reactivity:	Human
Host:	Rabbit
Clonality:	Polyclonal
Conjugate:	This JUP antibody is un-conjugated
Application:	Western Blotting (WB), Flow Cytometry (FACS), Immunohistochemistry (Paraffin-embedded Sections) (IHC (p))

Product Details

Immunogen:	This JUP antibody is generated from rabbits immunized with a KLH conjugated synthetic peptide between 636-663 amino acids from the C-terminal region of human JUP.
Clone:	RB23555
Isotype:	Ig Fraction
Predicted Reactivity:	B, M, Pig, Rat
Purification:	This antibody is purified through a protein A column, followed by peptide affinity purification.

Target Details

Target:	JUP
---------	-----

Target Details

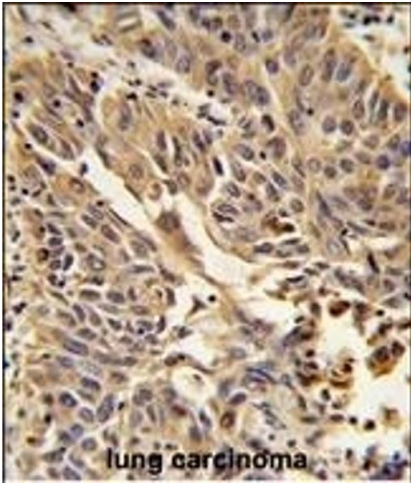
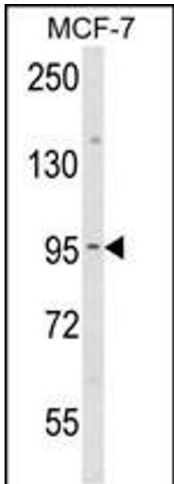
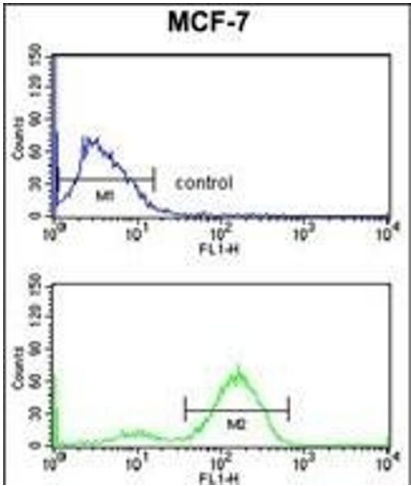
Alternative Name:	JUP (JUP Products)
Background:	JUP is a major cytoplasmic protein which is the only known constituent common to submembranous plaques of both desmosomes and intermediate junctions. This protein forms distinct complexes with cadherins and desmosomal cadherins and is a member of the catenin family since it contains a distinct repeating amino acid motif called the armadillo repeat.
Molecular Weight:	81745
Gene ID:	3728
NCBI Accession:	NP_002221 , NP_068831
UniProt:	P14923
Pathways:	Cell-Cell Junction Organization , Maintenance of Protein Location

Application Details

Application Notes:	WB: 1:1000. IHC-P: 1:50~100. FC: 1:10~50
Restrictions:	For Research Use only

Handling

Format:	Liquid
Buffer:	Purified polyclonal antibody supplied in PBS with 0.09 % (W/V) sodium azide.
Preservative:	Sodium azide
Precaution of Use:	This product contains Sodium azide: a POISONOUS AND HAZARDOUS SUBSTANCE which should be handled by trained staff only.
Storage:	4 °C, -20 °C
Storage Comment:	Maintain refrigerated at 2-8 °C for up to 6 months. For long term storage store at -20 °C in small aliquots to prevent freeze-thaw cycles.
Expiry Date:	6 months



Flow Cytometry

Image 1. JUP Antibody (C-term) (ABIN652942 and ABIN2842601) flow cytometry analysis of MCF-7 cells (bottom histogram) compared to a negative control cell (top histogram). FITC-conjugated goat-anti-rabbit secondary antibodies were used for the analysis.

Western Blotting

Image 2. Western blot analysis of JUP Antibody (C-term) (ABIN652942 and ABIN2842601) in MCF-7 cell line lysates (35 µg/lane). JUP (arrow) was detected using the purified Pab.

Immunohistochemistry (Paraffin-embedded Sections)

Image 3. Formalin-fixed and paraffin-embedded human lung carcinoma reacted with JUP Antibody (C-term), which was peroxidase-conjugated to the secondary antibody, followed by DAB staining. This data demonstrates the use of this antibody for immunohistochemistry, clinical relevance has not been evaluated.