



[Go to Product page](#)

Datasheet for ABIN652943

anti-LY75/DEC-205 antibody (AA 646-675)

3 Images

Overview

Quantity:	400 µL
Target:	LY75/DEC-205 (LY75)
Binding Specificity:	AA 646-675
Reactivity:	Human
Host:	Rabbit
Clonality:	Polyclonal
Conjugate:	This LY75/DEC-205 antibody is un-conjugated
Application:	Western Blotting (WB), Flow Cytometry (FACS), Immunohistochemistry (Paraffin-embedded Sections) (IHC (p))

Product Details

Immunogen:	This LY75 antibody is generated from rabbits immunized with a KLH conjugated synthetic peptide between 646-675 amino acids from the Central region of human LY75.
Clone:	RB23558
Isotype:	Ig Fraction
Purification:	This antibody is purified through a protein A column, followed by peptide affinity purification.

Target Details

Target:	LY75/DEC-205 (LY75)
Alternative Name:	LY75 (LY75 Products)

Target Details

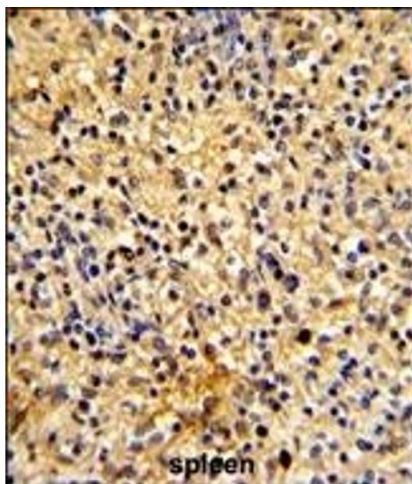
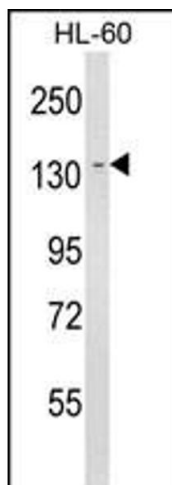
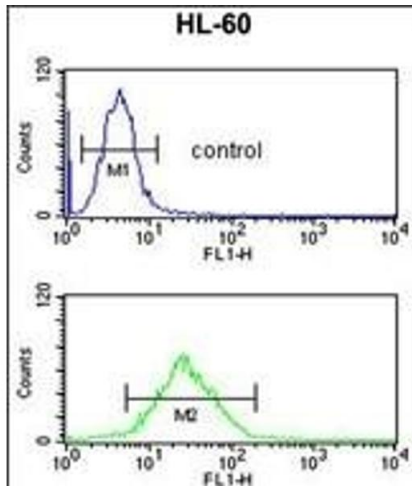
Background:	LY75 acts as an endocytic receptor to direct captured antigens from the extracellular space to a specialized antigen-processing compartment. It causes reduced proliferation of B-lymphocytes.
Molecular Weight:	198311
Gene ID:	4065
NCBI Accession:	NP_001185688 , NP_001185689 , NP_002340
UniProt:	O60449

Application Details

Application Notes:	WB: 1:1000. IHC-P: 1:50~100. FC: 1:10~50
Restrictions:	For Research Use only

Handling

Format:	Liquid
Buffer:	Purified polyclonal antibody supplied in PBS with 0.09 % (W/V) sodium azide.
Preservative:	Sodium azide
Precaution of Use:	This product contains Sodium azide: a POISONOUS AND HAZARDOUS SUBSTANCE which should be handled by trained staff only.
Storage:	4 °C,-20 °C
Storage Comment:	Maintain refrigerated at 2-8 °C for up to 6 months. For long term storage store at -20 °C in small aliquots to prevent freeze-thaw cycles.
Expiry Date:	6 months



Flow Cytometry

Image 1. LY75 Antibody (Center) (ABIN652943 and ABIN2842602) flow cytometric analysis of HL-60 cells (bottom histogram) compared to a negative control cell (top histogram). FITC-conjugated goat-anti-rabbit secondary antibodies were used for the analysis.

Western Blotting

Image 2. Western blot analysis of LY75 Antibody (Center) (ABIN652943 and ABIN2842602) in HL-60 cell line lysates (35 µg/lane). LY75 (arrow) was detected using the purified Pab.

Immunohistochemistry (Paraffin-embedded Sections)

Image 3. Formalin-fixed and paraffin-embedded human spleen tissue reacted with LY75 Antibody (Center), which was peroxidase-conjugated to the secondary antibody, followed by DAB staining. This data demonstrates the use of this antibody for immunohistochemistry, clinical relevance has not been evaluated.