



[Go to Product page](#)

Datasheet for ABIN652953

anti-EDIL3 antibody (AA 337-365)

3 Images

Overview

Quantity:	400 µL
Target:	EDIL3 (DEL1)
Binding Specificity:	AA 337-365
Reactivity:	Human, Rat
Host:	Rabbit
Clonality:	Polyclonal
Conjugate:	This EDIL3 antibody is un-conjugated
Application:	Western Blotting (WB), Flow Cytometry (FACS), Immunohistochemistry (Paraffin-embedded Sections) (IHC (p))

Product Details

Immunogen:	This EDIL3 antibody is generated from rabbits immunized with a KLH conjugated synthetic peptide between 337-365 amino acids from the Central region of human EDIL3.
Clone:	RB23732
Isotype:	IgG
Predicted Reactivity:	M
Purification:	This antibody is purified through a protein A column, followed by peptide affinity purification.

Target Details

Target:	EDIL3 (DEL1)
---------	--------------

Target Details

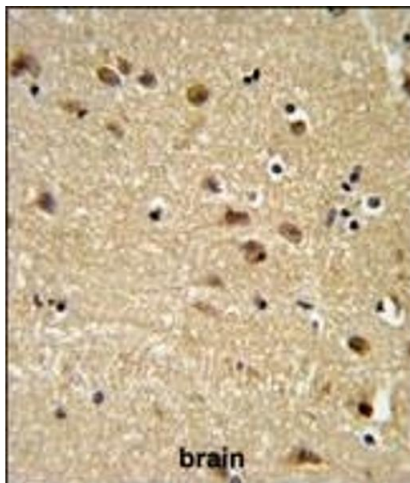
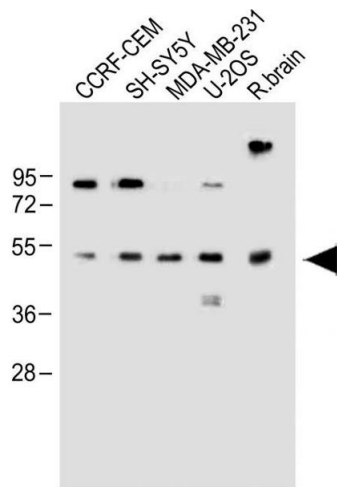
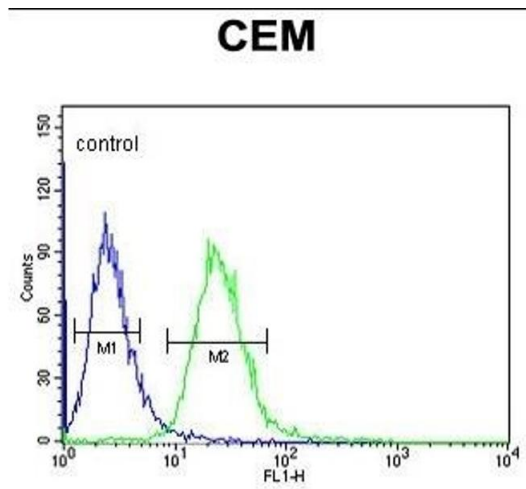
Alternative Name:	EDIL3 (DEL1 Products)
Background:	EDIL3 is an integrin ligand. It plays an important role in mediating angiogenesis and may be important in vessel wall remodeling and development. It also influences endothelial cell behavior.
Molecular Weight:	53765
Gene ID:	10085
NCBI Accession:	NP_001265571 , NP_005702
UniProt:	O43854

Application Details

Application Notes:	WB: 1:1000. IHC-P: 1:50~100. FC: 1:10~50
Restrictions:	For Research Use only

Handling

Format:	Liquid
Buffer:	Purified polyclonal antibody supplied in PBS with 0.09 % (W/V) sodium azide.
Preservative:	Sodium azide
Precaution of Use:	This product contains Sodium azide: a POISONOUS AND HAZARDOUS SUBSTANCE which should be handled by trained staff only.
Storage:	4 °C,-20 °C
Storage Comment:	Maintain refrigerated at 2-8 °C for up to 6 months. For long term storage store at -20 °C in small aliquots to prevent freeze-thaw cycles.
Expiry Date:	6 months



Flow Cytometry

Image 1. EDIL3 Antibody (Center) (ABIN652953 and ABIN2842608) flow cytometric analysis of CEM cells (right histogram) compared to a negative control cell (left histogram). FITC-conjugated goat-anti-rabbit secondary antibodies were used for the analysis.

Western Blotting

Image 2. All lanes : Anti-EDIL3 Antibody (Center) at 1:1000 dilution Lane 1: CCRF-CEM whole cell lysate Lane 2: SH-SY5Y whole cell lysate Lane 3: MDA-MB-231 whole cell lysate Lane 4: U-2OS whole cell lysate Lane 5: Rat brain whole lysate Lysates/proteins at 20 µg per lane. Secondary Goat Anti-Rabbit IgG, (H+L), Peroxidase conjugated at 1/10000 dilution. Predicted band size : 54 kDa Blocking/Dilution buffer: 5 % NFDM/TBST.

Immunohistochemistry (Paraffin-embedded Sections)

Image 3. EDIL3 Antibody (Center) (ABIN652953 and ABIN2842608) IHC analysis in formalin fixed and paraffin embedded human brain tissue followed by peroxidase conjugation of the secondary antibody and DAB staining. This data demonstrates the use of the EDIL3 Antibody (Center) for immunohistochemistry. Clinical relevance has not been evaluated.