

Datasheet for ABIN652956
anti-CLTA antibody (AA 99-127)[Go to Product page](#)

4 Images

Overview

Quantity:	400 µL
Target:	CLTA
Binding Specificity:	AA 99-127
Reactivity:	Human
Host:	Rabbit
Clonality:	Polyclonal
Conjugate:	This CLTA antibody is un-conjugated
Application:	Western Blotting (WB), Flow Cytometry (FACS), Immunohistochemistry (Paraffin-embedded Sections) (IHC (p))

Product Details

Immunogen:	This CLTA antibody is generated from rabbits immunized with a KLH conjugated synthetic peptide between 99-127 amino acids from the Central region of human CLTA.
Clone:	RB22695
Isotype:	Ig Fraction
Purification:	This antibody is purified through a protein A column, followed by peptide affinity purification.

Target Details

Target:	CLTA
Alternative Name:	CLTA (CLTA Products)

Target Details

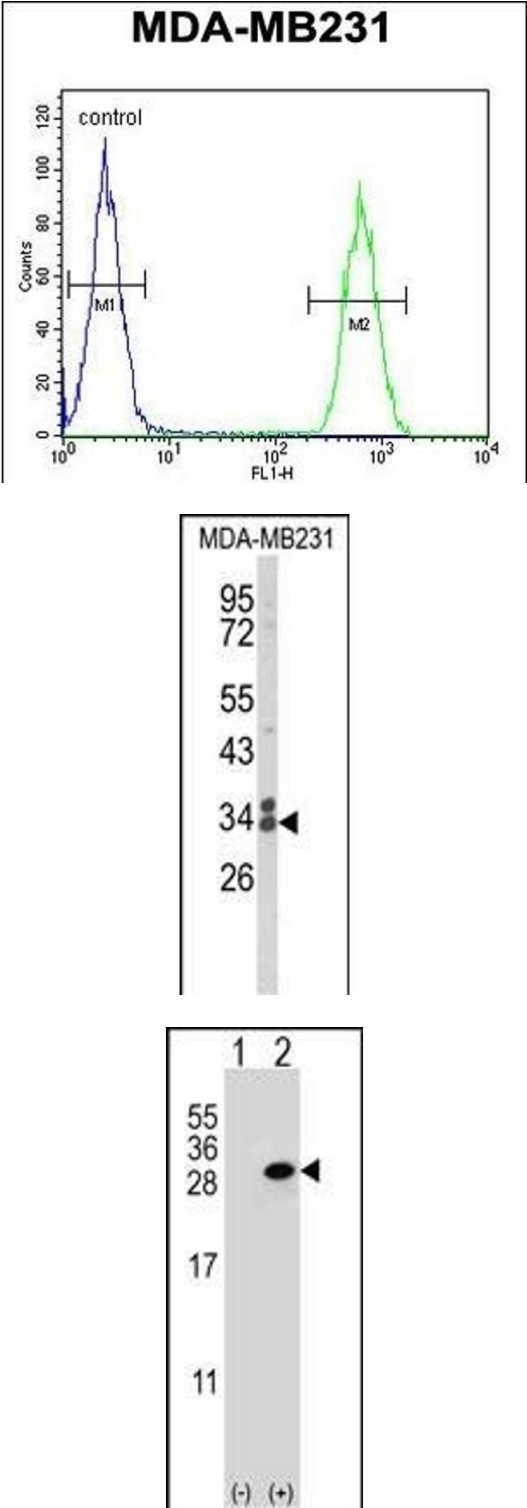
Background:	Clathrin is a large, soluble protein composed of heavy and light chains. It functions as the main structural component of the lattice-type cytoplasmic face of coated pits and vesicles which entrap specific macromolecules during receptor-mediated endocytosis. CLTA is one of two clathrin light chain proteins which are believed to function as regulatory elements.
Molecular Weight:	27077
Gene ID:	1211
NCBI Accession:	NP_001070145 , NP_001171689 , NP_001171691 , NP_001824 , NP_009027
UniProt:	P09496
Pathways:	EGFR Signaling Pathway , Neurotrophin Signaling Pathway , EGFR Downregulation

Application Details

Application Notes:	WB: 1:1000. WB: 1:1000. IHC-P: 1:50~100. FC: 1:10~50
Restrictions:	For Research Use only

Handling

Format:	Liquid
Buffer:	Purified polyclonal antibody supplied in PBS with 0.09 % (W/V) sodium azide.
Preservative:	Sodium azide
Precaution of Use:	This product contains Sodium azide: a POISONOUS AND HAZARDOUS SUBSTANCE which should be handled by trained staff only.
Storage:	4 °C,-20 °C
Storage Comment:	Maintain refrigerated at 2-8 °C for up to 6 months. For long term storage store at -20 °C in small aliquots to prevent freeze-thaw cycles.
Expiry Date:	6 months



Flow Cytometry

Image 1. CLTA Antibody (Center) (ABIN652956 and ABIN2842611) flow cytometric analysis of MDA-M cells (right histogram) compared to a negative control cell (left histogram). FITC-conjugated goat-anti-rabbit secondary antibodies were used for the analysis.

Western Blotting

Image 2. Western blot analysis of CLTA Antibody (Center) (ABIN652956 and ABIN2842611) in MDA-M cell line lysates (35 µg/lane). CLTA (arrow) was detected using the purified Pab.

Western Blotting

Image 3. Western blot analysis of CLTA (arrow) using rabbit polyclonal CLTA Antibody (Center) (ABIN652956 and ABIN2842611). 293 cell lysates (2 µg/lane) either nontransfected (Lane 1) or transiently transfected (Lane 2) with the CLTA gene.

Please check the [product details page](#) for more images. Overall 4 images are available for ABIN652956.