

Datasheet for ABIN652961
anti-MAPK8IP1 antibody (C-Term)

4 Images

[Go to Product page](#)

Overview

Quantity:	400 µL
Target:	MAPK8IP1
Binding Specificity:	AA 470-498, C-Term
Reactivity:	Human
Host:	Rabbit
Clonality:	Polyclonal
Conjugate:	This MAPK8IP1 antibody is un-conjugated
Application:	Western Blotting (WB), Immunofluorescence (IF), Immunohistochemistry (Paraffin-embedded Sections) (IHC (p)), Flow Cytometry (FACS)

Product Details

Immunogen:	This JIP1 antibody is generated from rabbits immunized with a KLH conjugated synthetic peptide between 470-498 amino acids from the C-terminal region of human JIP1.
Clone:	RB23000
Isotype:	Ig Fraction
Purification:	This antibody is purified through a protein A column, followed by peptide affinity purification.

Target Details

Target:	MAPK8IP1
Alternative Name:	JIP1 (MAPK8IP1 Products)

Target Details

Background: JIP1 is a regulator of the pancreatic beta-cell function. It is highly similar to JIP-1, a mouse protein known to be a regulator of c-Jun amino-terminal kinase (Mapk8). This protein has been shown to prevent MAPK8 mediated activation of transcription factors, and decrease IL-1 beta and MAP kinase kinase 1 (MEKK1) induced apoptosis in pancreatic beta cells. This protein also functions as a DNA-binding transactivator of the glucose transporter GLUT2.

Molecular Weight: 77524

Gene ID: 9479

NCBI Accession: [NP_005447](#)

UniProt: [Q9UQF2](#)

Application Details

Application Notes: IF: 1:10~50. WB: 1:1000. IHC-P: 1:50~100. FC: 1:10~50

Restrictions: For Research Use only

Handling

Format: Liquid

Buffer: Purified polyclonal antibody supplied in PBS with 0.09 % (W/V) sodium azide.

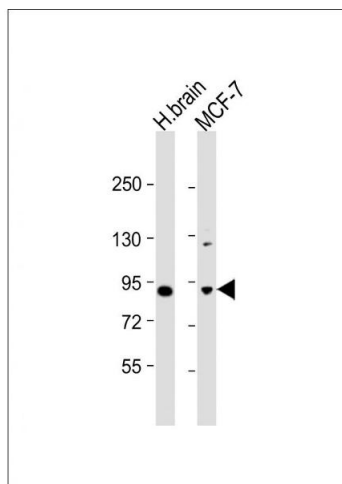
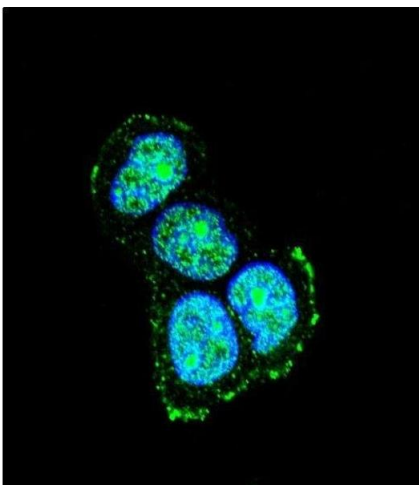
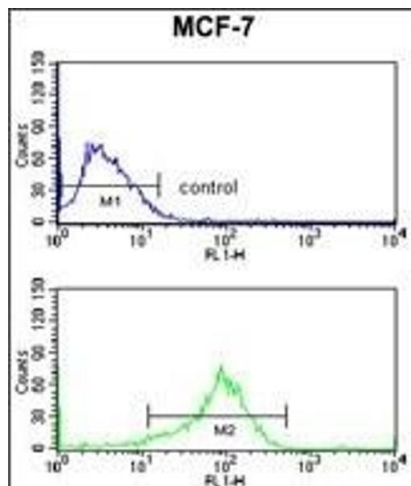
Preservative: Sodium azide

Precaution of Use: This product contains Sodium azide: a POISONOUS AND HAZARDOUS SUBSTANCE which should be handled by trained staff only.

Storage: 4 °C,-20 °C

Storage Comment: Maintain refrigerated at 2-8 °C for up to 6 months. For long term storage store at -20 °C in small aliquots to prevent freeze-thaw cycles.

Expiry Date: 6 months



Flow Cytometry

Image 1. JIP1 Antibody (C-term) (ABIN652961 and ABIN2842613) flow cytometry analysis of MCF-7 cells (bottom histogram) compared to a negative control cell (top histogram). FITC-conjugated goat-anti-rabbit secondary antibodies were used for the analysis.

Immunofluorescence

Image 2. Confocal immunofluorescent analysis of JIP1 Antibody (C-term) (ABIN652961 and ABIN2842613) with MCF-7 cell followed by Alexa Fluor® 488-conjugated goat anti-rabbit IgG (green). DAPI was used to stain the cell nuclear (blue).

Western Blotting

Image 3. All lanes : Anti-JIP1 Antibody (C-term) at 1:1000 dilution Lane 1: human brain lysate Lane 2: MCF-7 whole cell lysate Lysates/proteins at 20 µg per lane. Secondary Goat Anti-Rabbit IgG, (H+L), Peroxidase conjugated at 1/10000 dilution. Predicted band size : 78 kDa Blocking/Dilution buffer: 5 % NFDM/TBST.

Please check the [product details page](#) for more images. Overall 4 images are available for ABIN652961.