

Datasheet for ABIN652972  
**anti-DLK2 antibody (C-Term)**



[Go to Product page](#)

4 Images

1 Publication

## Overview

Quantity:	400 µL
Target:	DLK2
Binding Specificity:	AA 353-380, C-Term
Reactivity:	Human
Host:	Rabbit
Clonality:	Polyclonal
Conjugate:	This DLK2 antibody is un-conjugated
Application:	Western Blotting (WB), Flow Cytometry (FACS), Immunohistochemistry (Paraffin-embedded Sections) (IHC (p))

## Product Details

Immunogen:	This DLK2 antibody is generated from rabbits immunized with a KLH conjugated synthetic peptide between 353-380 amino acids from the C-terminal region of human DLK2.
Clone:	RB23694
Isotype:	Ig Fraction
Purification:	This antibody is purified through a protein A column, followed by peptide affinity purification.

## Target Details

Target:	DLK2
Alternative Name:	DLK2 ( <a href="#">DLK2 Products</a> )

## Target Details

---

Background:	DLK2 (Delta like protein 2) affects adipogenesis of 3T3-L1 preadipocytes and mesenchymal C3H10T1/2 cells suggesting a role as a regulator of adipogenesis.
Molecular Weight:	40548
Gene ID:	65989
NCBI Accession:	<a href="#">NP_076421</a> , <a href="#">NP_996262</a>
UniProt:	<a href="#">Q6UY11</a>

## Application Details

---

Application Notes:	WB: 1:1000. WB: 1:1000. IHC-P: 1:50~100. FC: 1:10~50
Restrictions:	For Research Use only

## Handling

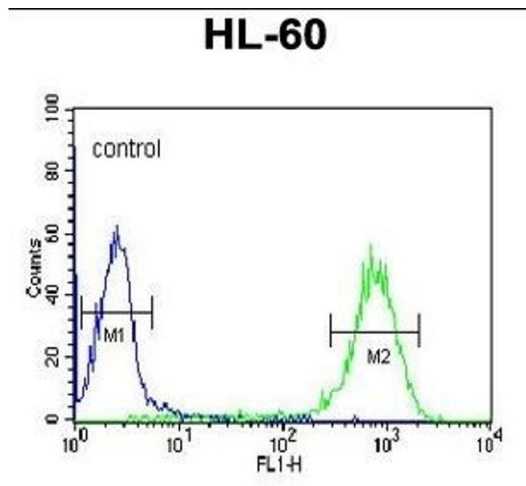
---

Format:	Liquid
Buffer:	Purified polyclonal antibody supplied in PBS with 0.09 % (W/V) sodium azide.
Preservative:	Sodium azide
Precaution of Use:	This product contains Sodium azide: a POISONOUS AND HAZARDOUS SUBSTANCE which should be handled by trained staff only.
Storage:	4 °C,-20 °C
Storage Comment:	Maintain refrigerated at 2-8 °C for up to 6 months. For long term storage store at -20 °C in small aliquots to prevent freeze-thaw cycles.
Expiry Date:	6 months

## Publications

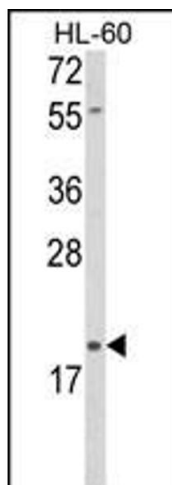
---

Product cited in:	Couture, Daviau, Fradette, Blouin: "The mixed-lineage kinase DLK is a key regulator of 3T3-L1 adipocyte differentiation." in: <b>PLoS ONE</b> , Vol. 4, Issue 3, pp. e4743, (2009) ( <a href="#">PubMed</a> ).
-------------------	--



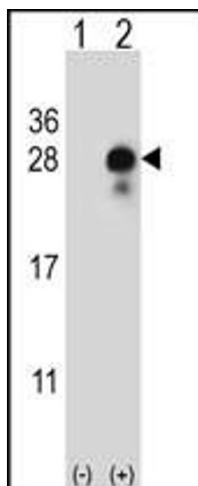
### Flow Cytometry

**Image 1.** DLK2 Antibody (C-term) (ABIN652972 and ABIN2842616) flow cytometric analysis of HL-60 cells (right histogram) compared to a negative control cell (left histogram). FITC-conjugated goat-anti-rabbit secondary antibodies were used for the analysis.



### Western Blotting

**Image 2.** Western blot analysis of DLK2 Antibody (C-term) (ABIN652972 and ABIN2842616) in HL-60 cell line lysates (35 µg/lane). DLK2 (arrow) was detected using the purified Pab.



### Western Blotting

**Image 3.** Western blot analysis of DLK2 (arrow) using rabbit polyclonal DLK2 Antibody (C-term) (ABIN652972 and ABIN2842616). 293 cell lysates (2 µg/lane) either nontransfected (Lane 1) or transiently transfected (Lane 2) with the DLK2 gene.

Please check the [product details page](#) for more images. Overall 4 images are available for ABIN652972.