

Datasheet for ABIN652983  
**anti-SPG20 antibody (N-Term)**[Go to Product page](#)

## 3 Images

## Overview

Quantity:	400 µL
Target:	SPG20
Binding Specificity:	AA 18-45, N-Term
Reactivity:	Human
Host:	Rabbit
Clonality:	Polyclonal
Conjugate:	This SPG20 antibody is un-conjugated
Application:	Western Blotting (WB), Flow Cytometry (FACS), Immunohistochemistry (Paraffin-embedded Sections) (IHC (p))

## Product Details

Immunogen:	This SPG20 antibody is generated from rabbits immunized with a KLH conjugated synthetic peptide between 18-45 amino acids from the N-terminal region of human SPG20.
Clone:	RB22531
Isotype:	Ig Fraction
Predicted Reactivity:	B, M
Purification:	This antibody is purified through a protein A column, followed by peptide affinity purification.

## Target Details

Target:	SPG20
---------	-------

### Target Details

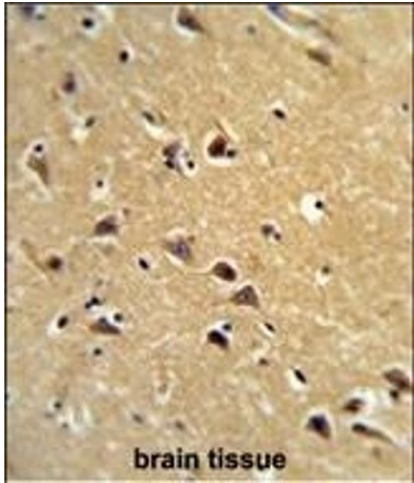
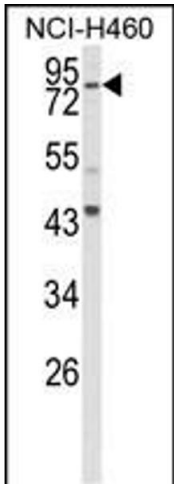
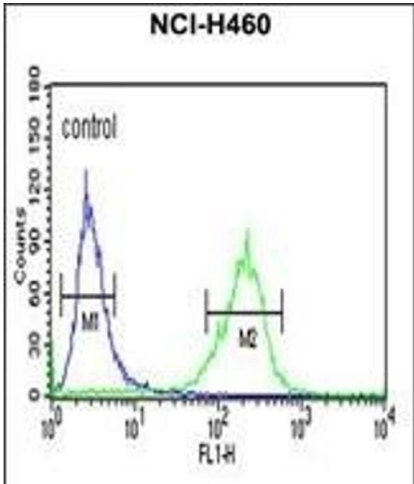
Alternative Name:	SPG20 ( <a href="#">SPG20 Products</a> )
Background:	SPG20 is a protein containing a MIT (Microtubule Interacting and Trafficking molecule) domain, and is implicated in regulating endosomal trafficking and mitochondria function. The protein localizes to mitochondria and partially co-localizes with microtubules. Stimulation with epidermal growth factor (EGF) results in protein translocation to the plasma membrane, and the protein functions in the degradation and intracellular trafficking of EGF receptor.
Molecular Weight:	72833
Gene ID:	23111
NCBI Accession:	<a href="#">NP_001135766</a> , <a href="#">NP_001135767</a> , <a href="#">NP_001135768</a> , <a href="#">NP_055902</a>
UniProt:	<a href="#">Q8N0X7</a>
Pathways:	<a href="#">Regulation of Cell Size</a> , <a href="#">SARS-CoV-2 Protein Interactome</a>

### Application Details

Application Notes:	WB: 1:1000. IHC-P: 1:50~100. FC: 1:10~50
Restrictions:	For Research Use only

### Handling

Format:	Liquid
Buffer:	Purified polyclonal antibody supplied in PBS with 0.09 % (W/V) sodium azide.
Preservative:	Sodium azide
Precaution of Use:	This product contains Sodium azide: a POISONOUS AND HAZARDOUS SUBSTANCE which should be handled by trained staff only.
Storage:	4 °C,-20 °C
Storage Comment:	Maintain refrigerated at 2-8 °C for up to 6 months. For long term storage store at -20 °C in small aliquots to prevent freeze-thaw cycles.
Expiry Date:	6 months



Flow Cytometry

**Image 1.** SPG20 Antibody (N-term) (ABIN652983 and ABIN2842623) flow cytometric analysis of NCI- cells (right histogram) compared to a negative control cell (left histogram).FITC-conjugated goat-anti-rabbit secondary antibodies were used for the analysis.

Western Blotting

**Image 2.** Western blot analysis of SPG20 Antibody (N-term) (ABIN652983 and ABIN2842623) in NCI- cell line lysates (35 µg/lane). SPG20 (arrow) was detected using the purified Pab.

Immunohistochemistry (Paraffin-embedded Sections)

**Image 3.** Formalin-fixed and paraffin-embedded human brain tissue reacted with SPG20 Antibody (N-term), which was peroxidase-conjugated to the secondary antibody, followed by DAB staining. This data demonstrates the use of this antibody for immunohistochemistry, clinical relevance has not been evaluated.