

Datasheet for ABIN652988
anti-CHPF antibody (AA 327-354)[Go to Product page](#)

3 Images

Overview

Quantity:	400 µL
Target:	CHPF
Binding Specificity:	AA 327-354
Reactivity:	Human, Mouse
Host:	Rabbit
Clonality:	Polyclonal
Conjugate:	This CHPF antibody is un-conjugated
Application:	Western Blotting (WB), Flow Cytometry (FACS), Immunohistochemistry (Paraffin-embedded Sections) (IHC (p))

Product Details

Immunogen:	This CHPF antibody is generated from rabbits immunized with a KLH conjugated synthetic peptide between 327-354 amino acids from the Central region of human CHPF.
Clone:	RB23131
Isotype:	Ig Fraction
Purification:	This antibody is purified through a protein A column, followed by peptide affinity purification.

Target Details

Target:	CHPF
Alternative Name:	CHPF (CHPF Products)

Target Details

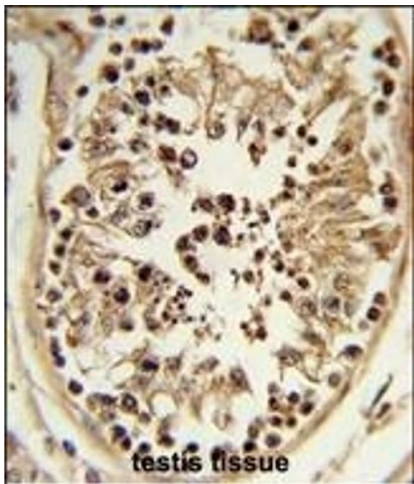
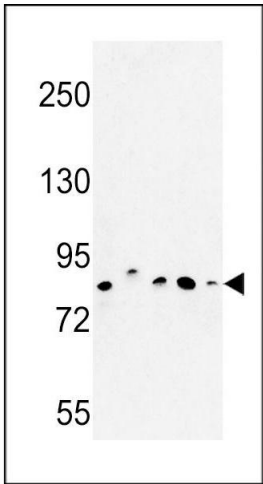
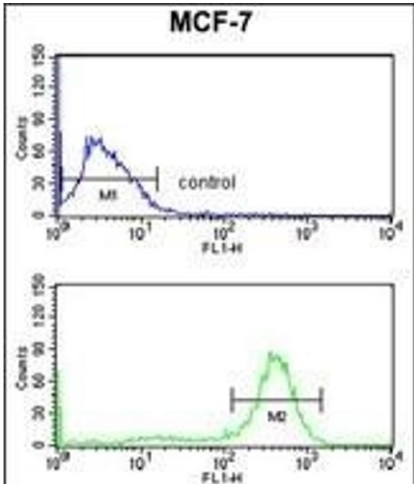
Background:	CHPF is a protein that has both beta-1,3-glucuronic acid and beta-1,4-N-acetylgalactosamine transferase activity. Transfers glucuronic acid (GlcUA) from UDP-GlcUA and N-acetylgalactosamine (GalNAc) from UDP-GalNAc to the non-reducing end of the elongating chondroitin polymer.
Molecular Weight:	85467
Gene ID:	79586
NCBI Accession:	NP_001182660 , NP_078812
UniProt:	Q8IZ52
Pathways:	Glycosaminoglycan Metabolic Process , SARS-CoV-2 Protein Interactome

Application Details

Application Notes:	WB: 1:1000. IHC-P: 1:50~100. FC: 1:10~50
Restrictions:	For Research Use only

Handling

Format:	Liquid
Buffer:	Purified polyclonal antibody supplied in PBS with 0.09 % (W/V) sodium azide.
Preservative:	Sodium azide
Precaution of Use:	This product contains Sodium azide: a POISONOUS AND HAZARDOUS SUBSTANCE which should be handled by trained staff only.
Storage:	4 °C,-20 °C
Storage Comment:	Maintain refrigerated at 2-8 °C for up to 6 months. For long term storage store at -20 °C in small aliquots to prevent freeze-thaw cycles.
Expiry Date:	6 months



Flow Cytometry

Image 1. CHPF Antibody (Center) (ABIN652988 and ABIN2842628) flow cytometry analysis of MCF-7 cells (bottom histogram) compared to a negative control cell (top histogram). FITC-conjugated goat-anti-rabbit secondary antibodies were used for the analysis.

Western Blotting

Image 2. Western blot analysis of CHPF Antibody (Center) (ABIN652988 and ABIN2842628) in MDA-M, MCF-7, HepG2, cell line and mouse testis tissue lysates (35 µg/lane). CHPF (arrow) was detected using the purified Pab.

Immunohistochemistry (Paraffin-embedded Sections)

Image 3. Formalin-fixed and paraffin-embedded human testis tissue reacted with CHPF Antibody (Center), which was peroxidase-conjugated to the secondary antibody, followed by DAB staining. This data demonstrates the use of this antibody for immunohistochemistry, clinical relevance has not been evaluated.