

Datasheet for ABIN652990
anti-EXTL3 antibody (N-Term)[Go to Product page](#)

3 Images

Overview

Quantity:	400 µL
Target:	EXTL3
Binding Specificity:	AA 43-72, N-Term
Reactivity:	Human
Host:	Rabbit
Clonality:	Polyclonal
Conjugate:	This EXTL3 antibody is un-conjugated
Application:	Western Blotting (WB), Flow Cytometry (FACS), Immunohistochemistry (Paraffin-embedded Sections) (IHC (p))

Product Details

Immunogen:	This EXTL3 antibody is generated from rabbits immunized with a KLH conjugated synthetic peptide between 43-72 amino acids from the N-terminal region of human EXTL3.
Clone:	RB23315
Isotype:	Ig Fraction
Purification:	This antibody is purified through a protein A column, followed by peptide affinity purification.

Target Details

Target:	EXTL3
Alternative Name:	EXTL3 (EXTL3 Products)

Target Details

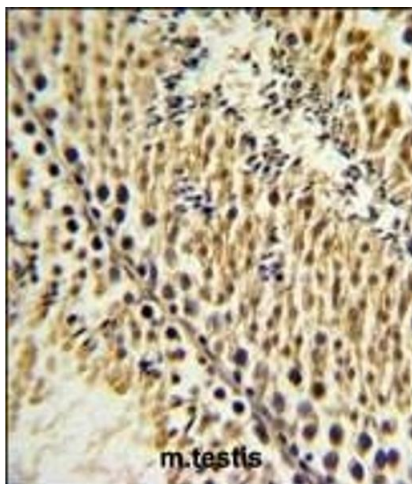
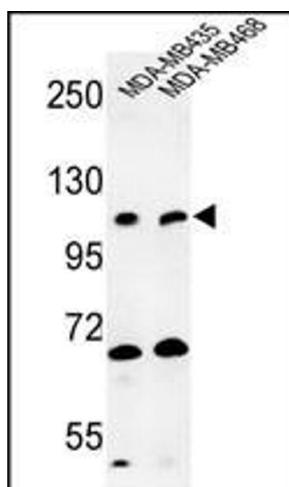
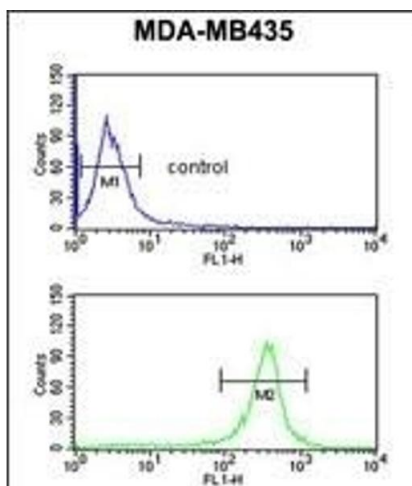
Background:	EXTL3 is probable glycosyltransferase.
Molecular Weight:	104749
Gene ID:	2137
NCBI Accession:	NP_001431
UniProt:	O43909
Pathways:	Glycosaminoglycan Metabolic Process , ER-Nucleus Signaling

Application Details

Application Notes:	WB: 1:1000. IHC-P: 1:50~100. FC: 1:10~50
Restrictions:	For Research Use only

Handling

Format:	Liquid
Buffer:	Purified polyclonal antibody supplied in PBS with 0.09 % (W/V) sodium azide.
Preservative:	Sodium azide
Precaution of Use:	This product contains Sodium azide: a POISONOUS AND HAZARDOUS SUBSTANCE which should be handled by trained staff only.
Storage:	4 °C,-20 °C
Storage Comment:	Maintain refrigerated at 2-8 °C for up to 6 months. For long term storage store at -20 °C in small aliquots to prevent freeze-thaw cycles.
Expiry Date:	6 months



Flow Cytometry

Image 1. EXTL3 Antibody (N-term) (ABIN652990 and ABIN2842629) flow cytometric analysis of MDA-M cells (bottom histogram) compared to a negative control cell (top histogram). FITC-conjugated goat-anti-rabbit secondary antibodies were used for the analysis.

Western Blotting

Image 2. Western blot analysis of EXTL3 Antibody (N-term) (ABIN652990 and ABIN2842629) in MDA-M, MDA-M cell line lysates (35 µg/lane). EXTL3 (arrow) was detected using the purified Pab.

Immunohistochemistry (Paraffin-embedded Sections)

Image 3. EXTL3 Antibody (N-term) (ABIN652990 and ABIN2842629) IHC analysis in formalin fixed and paraffin embedded testis tissue followed by peroxidase conjugation of the secondary antibody and DAB staining. This data demonstrates the use of the EXTL3 Antibody (N-term) for immunohistochemistry. Clinical relevance has not been evaluated.