

Datasheet for ABIN652994  
**anti-SPRR1B antibody (C-Term)**[Go to Product page](#)

## 2 Images

## Overview

Quantity:	400 µL
Target:	SPRR1B
Binding Specificity:	AA 63-89, C-Term
Reactivity:	Human
Host:	Rabbit
Clonality:	Polyclonal
Conjugate:	This SPRR1B antibody is un-conjugated
Application:	Western Blotting (WB), Immunohistochemistry (Paraffin-embedded Sections) (IHC (p))

## Product Details

Immunogen:	This SPRR1B antibody is generated from rabbits immunized with a KLH conjugated synthetic peptide between 63-89 amino acids from the C-terminal region of human SPRR1B.
Clone:	RB23641
Isotype:	Ig Fraction
Purification:	This antibody is purified through a protein A column, followed by peptide affinity purification.

## Target Details

Target:	SPRR1B
Alternative Name:	SPRR1B ( <a href="#">SPRR1B Products</a> )
Background:	SPRR1B is a keratinocyte protein that first appears in the cell cytosol, but ultimately becomes

## Target Details

cross-linked to membrane proteins by transglutaminase. All that results in the formation of an insoluble envelope beneath the plasma membrane. Can function as both amine donor and acceptor in transglutaminase-mediated cross-linkage.

Molecular Weight: 9888

Gene ID: 6699

NCBI Accession: [NP\\_003116](#)

UniProt: [P22528](#)

## Application Details

Application Notes: WB: 1:1000. IHC-P: 1:50~100

Restrictions: For Research Use only

## Handling

Format: Liquid

Buffer: Purified polyclonal antibody supplied in PBS with 0.09 % (W/V) sodium azide.

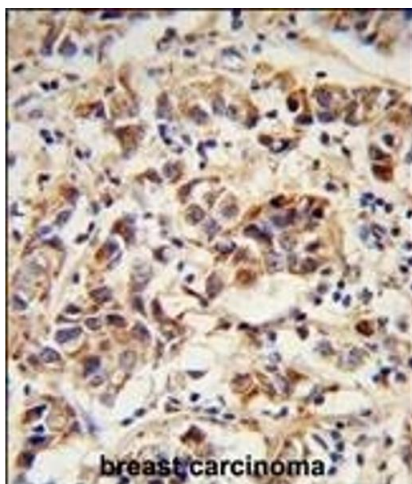
Preservative: Sodium azide

Precaution of Use: This product contains Sodium azide: a POISONOUS AND HAZARDOUS SUBSTANCE which should be handled by trained staff only.

Storage: 4 °C, -20 °C

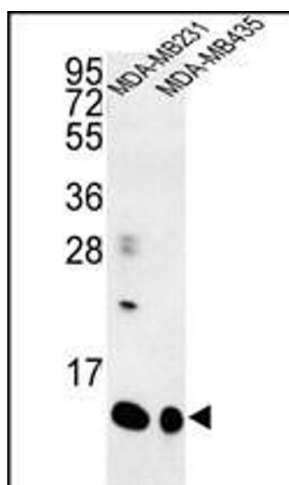
Storage Comment: Maintain refrigerated at 2-8 °C for up to 6 months. For long term storage store at -20 °C in small aliquots to prevent freeze-thaw cycles.

Expiry Date: 6 months



#### Immunohistochemistry (Paraffin-embedded Sections)

**Image 1.** Formalin-fixed and paraffin-embedded human breast carcinoma reacted with SPRR1B Antibody (C-term), which was peroxidase-conjugated to the secondary antibody, followed by DAB staining. This data demonstrates the use of this antibody for immunohistochemistry, clinical relevance has not been evaluated.



#### Western Blotting

**Image 2.** Western blot analysis of SPRR1B Antibody (C-term) (ABIN652994 and ABIN2842631) in MDA-M, MDA-M cell line lysates (35 µg/lane). SPRR1B (arrow) was detected using the purified Pab.