

Datasheet for ABIN653004
anti-ESRRB antibody (AA 275-305)

3 Images

1 Publication

[Go to Product page](#)

Overview

Quantity:	400 µL
Target:	ESRRB
Binding Specificity:	AA 275-305
Reactivity:	Human
Host:	Rabbit
Clonality:	Polyclonal
Conjugate:	This ESRRB antibody is un-conjugated
Application:	Western Blotting (WB), Immunohistochemistry (Paraffin-embedded Sections) (IHC (p)), Flow Cytometry (FACS)

Product Details

Immunogen:	This ESRRB antibody is generated from rabbits immunized with a KLH conjugated synthetic peptide between 275-305 amino acids from the Central region of human ESRRB.
Clone:	RB17738
Isotype:	Ig Fraction
Purification:	This antibody is prepared by Saturated Ammonium Sulfate (SAS) precipitation followed by dialysis against PBS.

Target Details

Target:	ESRRB
Alternative Name:	ESRRB (ESRRB Products)

Target Details

Background:	ESRRB encodes a protein with similarity to the estrogen receptor. Its function is unknown, however, a similar protein in mouse plays an essential role in placental development.
Molecular Weight:	48054
Gene ID:	2103
NCBI Accession:	NP_004443
UniProt:	O95718
Pathways:	Nuclear Receptor Transcription Pathway , Steroid Hormone Mediated Signaling Pathway , Stem Cell Maintenance

Application Details

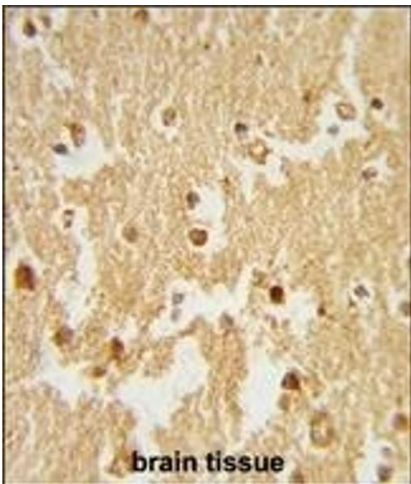
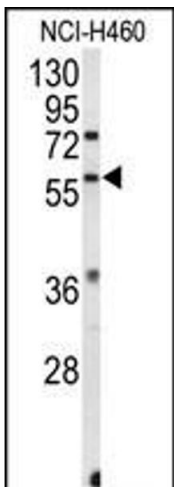
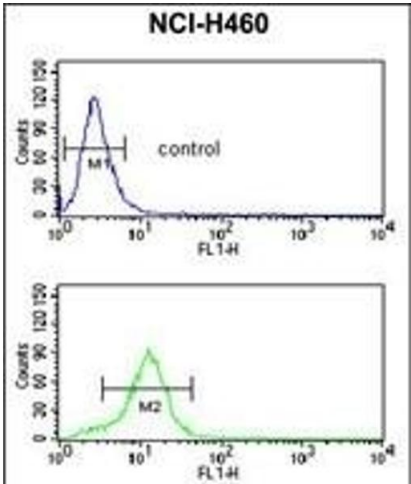
Application Notes:	WB: 1:1000. IHC-P: 1:50~100. FC: 1:10~50
Restrictions:	For Research Use only

Handling

Format:	Liquid
Buffer:	Purified polyclonal antibody supplied in PBS with 0.09 % (W/V) sodium azide.
Preservative:	Sodium azide
Precaution of Use:	This product contains Sodium azide: a POISONOUS AND HAZARDOUS SUBSTANCE which should be handled by trained staff only.
Storage:	4 °C,-20 °C
Storage Comment:	Maintain refrigerated at 2-8 °C for up to 6 months. For long term storage store at -20 °C in small aliquots to prevent freeze-thaw cycles.
Expiry Date:	6 months

Publications

Product cited in:	Gehrke, Wörns, Huber, Hess, Straub, Hövelmeyer, Waisman, Kim, Schuppan, Galle, Schattenberg : "Hepatic B cell leukemia-3 promotes hepatic steatosis and inflammation through insulin-sensitive metabolic transcription factors." in: Journal of hepatology , Vol. 65, Issue 6, pp. 1188-1197, (2018) (PubMed).
-------------------	---



Flow Cytometry

Image 1. ESRRB Antibody (Center) (ABIN653004 and ABIN2842636) flow cytometric analysis of NCI- cells (bottom histogram) compared to a negative control cell (top histogram). FITC-conjugated goat-anti-rabbit secondary antibodies were used for the analysis.

Western Blotting

Image 2. Western blot analysis of ESRRB Antibody (Center) (ABIN653004 and ABIN2842636) in NCI- cell line lysates (35 µg/lane). ESRRB (arrow) was detected using the purified Pab.

Immunohistochemistry (Paraffin-embedded Sections)

Image 3. Formalin-fixed and paraffin-embedded human brain tissue reacted with ESRRB Antibody (Center), which was peroxidase-conjugated to the secondary antibody, followed by DAB staining. This data demonstrates the use of this antibody for immunohistochemistry, clinical relevance has not been evaluated.