

Datasheet for ABIN653011
anti-MTTP antibody (C-Term)

2 Images

[Go to Product page](#)

Overview

Quantity:	400 µL
Target:	MTTP
Binding Specificity:	AA 816-842, C-Term
Reactivity:	Human
Host:	Rabbit
Clonality:	Polyclonal
Conjugate:	This MTTP antibody is un-conjugated
Application:	Western Blotting (WB), Immunohistochemistry (Paraffin-embedded Sections) (IHC (p))

Product Details

Immunogen:	This MTTP antibody is generated from rabbits immunized with a KLH conjugated synthetic peptide between 816-842 amino acids from the C-terminal region of human MTTP.
Clone:	RB22919
Isotype:	Ig Fraction
Purification:	This antibody is purified through a protein A column, followed by peptide affinity purification.

Target Details

Target:	MTTP
Alternative Name:	MTTP (MTTP Products)
Background:	MTTP encodes the large subunit of the heterodimeric microsomal triglyceride transfer protein.

Target Details

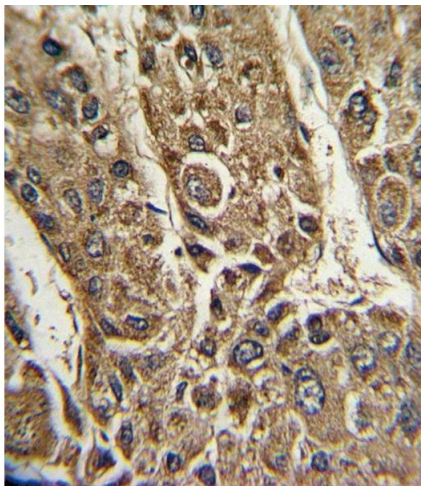
	Protein disulfide isomerase (PDI) completes the heterodimeric microsomal triglyceride transfer protein, which has been shown to play a entral role in lipoprotein assembly. Mutations in MTP can cause abetalipoproteinemia.
Molecular Weight:	99351
Gene ID:	4547
NCBI Accession:	NP_000244
UniProt:	P55157
Pathways:	Transition Metal Ion Homeostasis

Application Details

Application Notes:	WB: 1:1000. IHC-P: 1:10~50
Restrictions:	For Research Use only

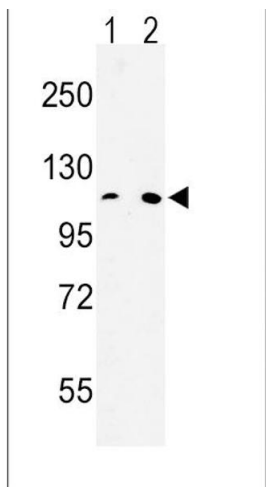
Handling

Format:	Liquid
Buffer:	Purified polyclonal antibody supplied in PBS with 0.09 % (W/V) sodium azide.
Preservative:	Sodium azide
Precaution of Use:	This product contains Sodium azide: a POISONOUS AND HAZARDOUS SUBSTANCE which should be handled by trained staff only.
Storage:	4 °C,-20 °C
Storage Comment:	Maintain refrigerated at 2-8 °C for up to 6 months. For long term storage store at -20 °C in small aliquots to prevent freeze-thaw cycles.
Expiry Date:	6 months



Immunohistochemistry (Paraffin-embedded Sections)

Image 1. Formalin-fixed and paraffin-embedded human hepatocarcinoma with MTTP Antibody (C-term), which was peroxidase-conjugated to the secondary antibody, followed by DAB staining. This data demonstrates the use of this antibody for immunohistochemistry, clinical relevance has not been evaluated.



Western Blotting

Image 2. Western blot analysis of MTTP Antibody (C-term) (ABIN653011 and ABIN2842637) in HeLa(lane 1), 293(lane 2) cell line lysates (35 µg/lane). MTTP (arrow) was detected using the purified Pab.