

Datasheet for ABIN653018  
**anti-PKM2 antibody (N-Term)**

3 Images



[Go to Product page](#)

## Overview

Quantity:	400 µL
Target:	PKM2
Binding Specificity:	AA 116-145, N-Term
Reactivity:	Human
Host:	Rabbit
Clonality:	Polyclonal
Conjugate:	This PKM2 antibody is un-conjugated
Application:	Western Blotting (WB), Flow Cytometry (FACS), Immunohistochemistry (Paraffin-embedded Sections) (IHC (p))

## Product Details

Immunogen:	This PKM2 antibody is generated from rabbits immunized with a KLH conjugated synthetic peptide between 116-145 amino acids from the N-terminal region of human PKM2.
Clone:	RB15338
Isotype:	Ig Fraction
Predicted Reactivity:	M, Rb, Rat
Purification:	This antibody is prepared by Saturated Ammonium Sulfate (SAS) precipitation followed by dialysis against PBS.

## Target Details

Target:	PKM2
---------	------

## Target Details

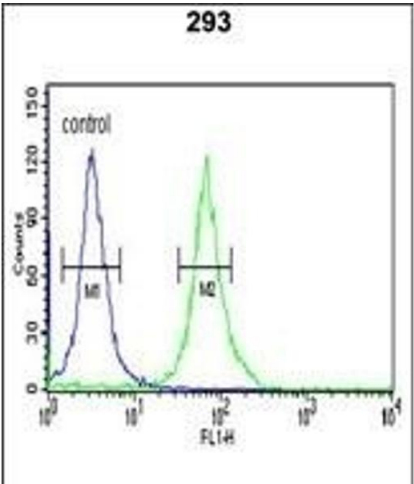
Alternative Name:	PKM2 ( <a href="#">PKM2 Products</a> )
Background:	PKM2 encodes a protein involved in glycolysis. The encoded protein is a pyruvate kinase that catalyzes the transfer of a phosphoryl group from phosphoenolpyruvate to ADP, generating ATP and pyruvate. This protein has been shown to interact with thyroid hormone and may mediate cellular metabolic effects induced by thyroid hormones. This protein has been found to bind Opa protein, a bacterial outer membrane protein involved in gonococcal adherence to and invasion of human cells, suggesting a role of this protein in bacterial pathogenesis.
Molecular Weight:	57937
Gene ID:	5315
NCBI Accession:	<a href="#">NP_001193725</a> , <a href="#">NP_001193726</a> , <a href="#">NP_001193727</a> , <a href="#">NP_001193728</a> , <a href="#">NP_002645</a> , <a href="#">NP_872270</a> , <a href="#">NP_872271</a>
UniProt:	<a href="#">P14618</a>
Pathways:	<a href="#">Warburg Effect</a>

## Application Details

Application Notes:	WB: 1:1000. IHC-P: 1:50~100. FC: 1:10~50
Restrictions:	For Research Use only

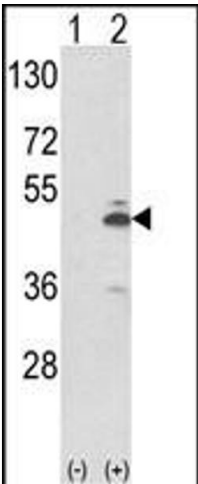
## Handling

Format:	Liquid
Buffer:	Purified polyclonal antibody supplied in PBS with 0.09 % (W/V) sodium azide.
Preservative:	Sodium azide
Precaution of Use:	This product contains Sodium azide: a POISONOUS AND HAZARDOUS SUBSTANCE which should be handled by trained staff only.
Storage:	4 °C, -20 °C
Storage Comment:	Maintain refrigerated at 2-8 °C for up to 6 months. For long term storage store at -20 °C in small aliquots to prevent freeze-thaw cycles.
Expiry Date:	6 months



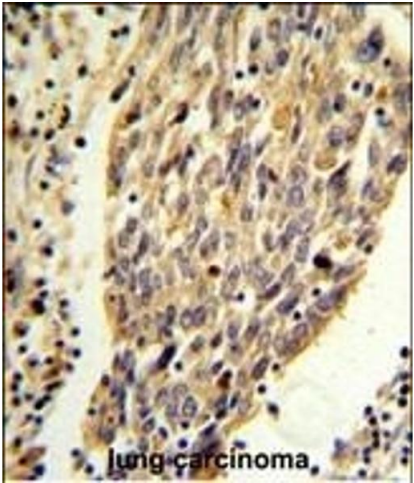
### Flow Cytometry

**Image 1.** PKM2 (N-term ) Antibody (ABIN653018 and ABIN2842641) flow cytometric analysis of 293 cells (right histogram) compared to a negative control cell (left histogram). FITC-conjugated goat-anti-rabbit secondary antibodies were used for the analysis.



### Western Blotting

**Image 2.** Western blot analysis of PKM2 (arrow) using rabbit polyclonal PKM2 Antibody (N-term ) (ABIN653018 and ABIN2842641). 293 cell lysates (2  $\mu$ g/lane) either nontransfected (Lane 1) or transiently transfected with the PKM2 gene (Lane 2).



### Immunohistochemistry (Paraffin-embedded Sections)

**Image 3.** PKM2 (N-term ) Antibody (ABIN653018 and ABIN2842641) IHC analysis in formalin fixed and paraffin embedded human lung carcinoma followed by peroxidase conjugation of the secondary antibody and DAB staining. This data demonstrates the use of the PKM2 (N-term ) Antibody for immunohistochemistry. Clinical relevance has not been evaluated.