

Datasheet for ABIN653019
anti-EEFSEC antibody (C-Term)[Go to Product page](#)

2 Images

Overview

Quantity:	400 µL
Target:	EEFSEC
Binding Specificity:	AA 541-568, C-Term
Reactivity:	Human, Mouse
Host:	Rabbit
Clonality:	Polyclonal
Conjugate:	This EEFSEC antibody is un-conjugated
Application:	Western Blotting (WB), Immunohistochemistry (Paraffin-embedded Sections) (IHC (p))

Product Details

Immunogen:	This EEFSEC antibody is generated from rabbits immunized with a KLH conjugated synthetic peptide between 541-568 amino acids from the C-terminal region of human EEFSEC.
Clone:	RB23735
Isotype:	Ig Fraction
Purification:	This antibody is purified through a protein A column, followed by peptide affinity purification.

Target Details

Target:	EEFSEC
Alternative Name:	EEFSEC (EEFSEC Products)
Background:	EEFSEC is a translation factor necessary for the incorporation of selenocysteine into proteins. It

Target Details

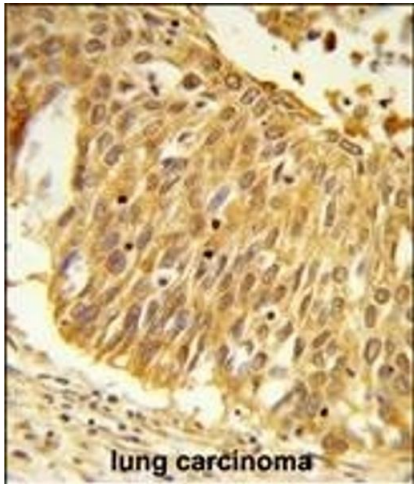
	probably replaces EF-Tu for the insertion of selenocysteine directed by the UGA codon. SelB binds GTP and GDP.
Molecular Weight:	65305
Gene ID:	60678
NCBI Accession:	NP_068756
UniProt:	P57772

Application Details

Application Notes:	WB: 1:1000. IHC-P: 1:50~100
Restrictions:	For Research Use only

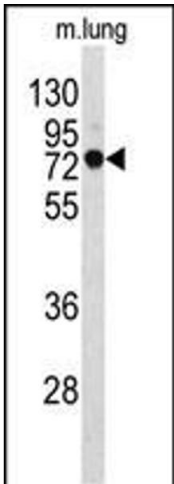
Handling

Format:	Liquid
Buffer:	Purified polyclonal antibody supplied in PBS with 0.09 % (W/V) sodium azide.
Preservative:	Sodium azide
Precaution of Use:	This product contains Sodium azide: a POISONOUS AND HAZARDOUS SUBSTANCE which should be handled by trained staff only.
Storage:	4 °C,-20 °C
Storage Comment:	Maintain refrigerated at 2-8 °C for up to 6 months. For long term storage store at -20 °C in small aliquots to prevent freeze-thaw cycles.
Expiry Date:	6 months



Immunohistochemistry (Paraffin-embedded Sections)

Image 1. Formalin-fixed and paraffin-embedded human lung carcinoma reacted with EEFSEC Antibody (C-term), which was peroxidase-conjugated to the secondary antibody, followed by DAB staining. This data demonstrates the use of this antibody for immunohistochemistry, clinical relevance has not been evaluated.



Western Blotting

Image 2. Western blot analysis of EEFSEC Antibody (C-term) (ABIN653019 and ABIN2842642) in mouse lung tissue lysates (35 µg/lane). EEFSEC (arrow) was detected using the purified Pab.