

Datasheet for ABIN653024
anti-CDC14B antibody (AA 188-215)[Go to Product page](#)

2 Images

Overview

Quantity:	400 µL
Target:	CDC14B
Binding Specificity:	AA 188-215
Reactivity:	Human
Host:	Rabbit
Clonality:	Polyclonal
Conjugate:	This CDC14B antibody is un-conjugated
Application:	Western Blotting (WB), Flow Cytometry (FACS)

Product Details

Immunogen:	This CDC14B antibody is generated from rabbits immunized with a KLH conjugated synthetic peptide between 188-215 amino acids from the Central region of human CDC14B.
Clone:	RB16909
Isotype:	Ig Fraction
Predicted Reactivity:	M
Purification:	This antibody is prepared by Saturated Ammonium Sulfate (SAS) precipitation followed by dialysis against PBS.

Target Details

Target:	CDC14B
---------	--------

Target Details

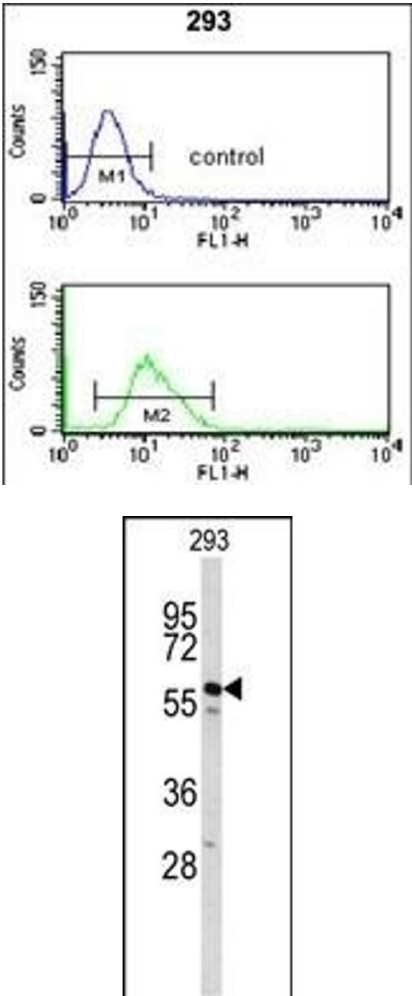
Alternative Name:	CDC14B (CDC14B Products)
Background:	CDC14B is a member of the dual specificity protein tyrosine phosphatase family. This protein is highly similar to <i>Saccharomyces cerevisiae</i> Cdc14, a protein tyrosine phosphatase involved in the exit of cell mitosis and initiation of DNA replication, which suggests the role in cell cycle control. This protein has been shown to interact with and dephosphorylates tumor suppressor protein p53, and is thought to regulate the function of p53. Alternative splice of this gene results in 3 transcript variants encoding distinct isoforms.
Molecular Weight:	56802
Gene ID:	8555
NCBI Accession:	NP_001070649 , NP_003662 , NP_201588
UniProt:	O60729

Application Details

Application Notes:	WB: 1:1000. FC: 1:10~50
Restrictions:	For Research Use only

Handling

Format:	Liquid
Buffer:	Purified polyclonal antibody supplied in PBS with 0.09 % (W/V) sodium azide.
Preservative:	Sodium azide
Precaution of Use:	This product contains Sodium azide: a POISONOUS AND HAZARDOUS SUBSTANCE which should be handled by trained staff only.
Storage:	4 °C,-20 °C
Storage Comment:	Maintain refrigerated at 2-8 °C for up to 6 months. For long term storage store at -20 °C in small aliquots to prevent freeze-thaw cycles.
Expiry Date:	6 months



Flow Cytometry

Image 1. CDC14B Antibody (Center) (ABIN653024 and ABIN2842645) flow cytometry analysis of 293 cells (bottom histogram) compared to a negative control cell (top histogram).FITC-conjugated goat-anti-rabbit secondary antibodies were used for the analysis.

Western Blotting

Image 2. Western blot analysis of CDC14B Antibody (Center) (ABIN653024 and ABIN2842645) in 293 cell line lysates (35 µg/lane). CDC14B (arrow) was detected using the purified Pab.