

Datasheet for ABIN653025
anti-CDK19 antibody (AA 253-285)

3 Images

[Go to Product page](#)

Overview

Quantity:	400 µL
Target:	CDK19
Binding Specificity:	AA 253-285
Reactivity:	Human, Mouse
Host:	Rabbit
Clonality:	Polyclonal
Conjugate:	This CDK19 antibody is un-conjugated
Application:	Western Blotting (WB), Immunohistochemistry (Paraffin-embedded Sections) (IHC (p)), Flow Cytometry (FACS)

Product Details

Immunogen:	This CDC2L6 antibody is generated from rabbits immunized with a KLH conjugated synthetic peptide between 253-285 amino acids from the Central region of human CDC2L6.
Clone:	RB16914
Isotype:	Ig Fraction
Purification:	This antibody is prepared by Saturated Ammonium Sulfate (SAS) precipitation followed by dialysis against PBS.

Target Details

Target:	CDK19
Alternative Name:	CDC2L6 (CDK19 Products)

Target Details

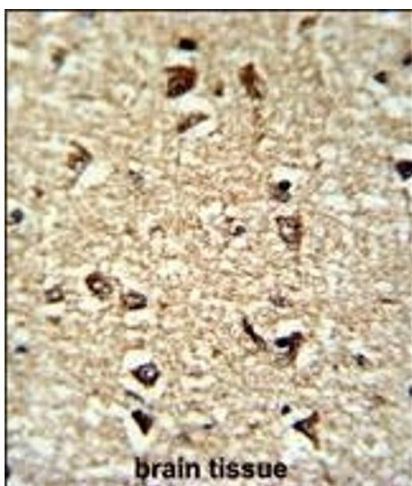
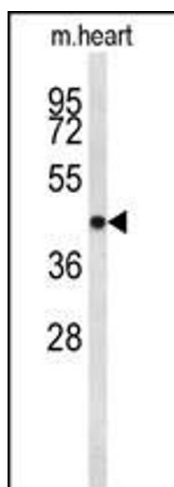
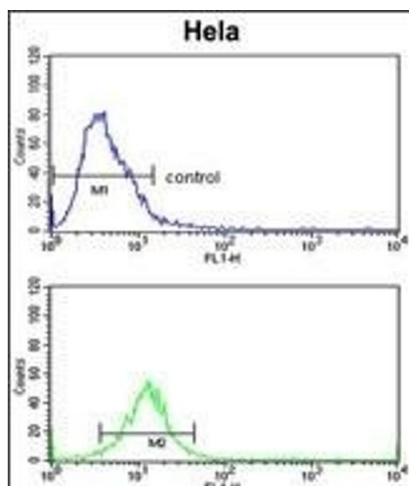
Background:	CDC2L6 is one of the components of the Mediator coactivator complex. The Mediator complex is a multiprotein complex required for transcriptional activation by DNA binding transcription factors of genes transcribed by RNA polymerase II. The protein encoded by this gene is similar to cyclin-dependent kinase 8 which can also be a component of the Mediator complex.
Molecular Weight:	56802
Gene ID:	23097
NCBI Accession:	NP_055891
UniProt:	Q9BWU1
Pathways:	Regulation of Lipid Metabolism by PPARalpha

Application Details

Application Notes:	WB: 1:1000. IHC-P: 1:50~100. FC: 1:10~50
Restrictions:	For Research Use only

Handling

Format:	Liquid
Buffer:	Purified polyclonal antibody supplied in PBS with 0.09 % (W/V) sodium azide.
Preservative:	Sodium azide
Precaution of Use:	This product contains Sodium azide: a POISONOUS AND HAZARDOUS SUBSTANCE which should be handled by trained staff only.
Storage:	4 °C,-20 °C
Storage Comment:	Maintain refrigerated at 2-8 °C for up to 6 months. For long term storage store at -20 °C in small aliquots to prevent freeze-thaw cycles.
Expiry Date:	6 months



Flow Cytometry

Image 1. CDC2L6 Antibody (Center) (ABIN653025 and ABIN2842646) flow cytometric analysis of HeLa cells (bottom histogram) compared to a negative control cell (top histogram). FITC-conjugated goat-anti-rabbit secondary antibodies were used for the analysis.

Western Blotting

Image 2. Western blot analysis of CDC2L6 Antibody (Center) (ABIN653025 and ABIN2842646) in mouse heart tissue lysates (35 µg/lane). CDC2L6 (arrow) was detected using the purified Pab.

Immunohistochemistry (Paraffin-embedded Sections)

Image 3. Formalin-fixed and paraffin-embedded human brain tissue reacted with CDC2L6 Antibody (Center), which was peroxidase-conjugated to the secondary antibody, followed by DAB staining. This data demonstrates the use of this antibody for immunohistochemistry, clinical relevance has not been evaluated.