

Datasheet for ABIN653027

**anti-DUSP2 antibody (C-Term)**[Go to Product page](#)**2** Images

## Overview

Quantity:	400 µL
Target:	DUSP2
Binding Specificity:	AA 262-290, C-Term
Reactivity:	Human, Mouse
Host:	Rabbit
Clonality:	Polyclonal
Conjugate:	This DUSP2 antibody is un-conjugated
Application:	Western Blotting (WB), Flow Cytometry (FACS)

## Product Details

Immunogen:	This DUSP2 antibody is generated from rabbits immunized with a KLH conjugated synthetic peptide between 262-290 amino acids from the C-terminal region of human DUSP2.
Clone:	RB17124
Isotype:	Ig Fraction
Purification:	This antibody is prepared by Saturated Ammonium Sulfate (SAS) precipitation followed by dialysis against PBS.

## Target Details

Target:	DUSP2
Alternative Name:	DUSP2 ( <a href="#">DUSP2 Products</a> )

## Target Details

**Background:** DUSP2 is a member of the dual specificity protein phosphatase subfamily. These phosphatases inactivate their target kinases by dephosphorylating both the phosphoserine/threonine and phosphotyrosine residues. They negatively regulate members of the mitogen-activated protein (MAP) kinase superfamily (MAPK/ERK, SAPK/JNK, p38), which are associated with cellular proliferation and differentiation. Different members of the family of dual specificity phosphatases show distinct substrate specificities for various MAP kinases, different tissue distribution and subcellular localization, and different modes of inducibility of their expression by extracellular stimuli.

**Molecular Weight:** 34400

**Gene ID:** 1844

**NCBI Accession:** [NP\\_004409](#)

**UniProt:** [Q05923](#)

## Application Details

**Application Notes:** WB: 1:1000. FC: 1:10~50

**Restrictions:** For Research Use only

## Handling

**Format:** Liquid

**Buffer:** Purified polyclonal antibody supplied in PBS with 0.09 % (W/V) sodium azide.

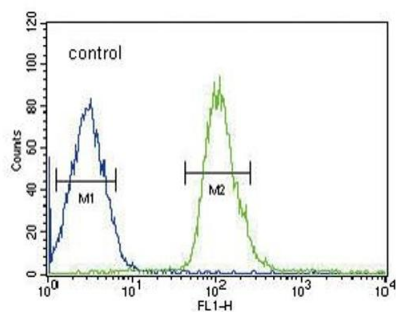
**Preservative:** Sodium azide

**Precaution of Use:** This product contains Sodium azide: a POISONOUS AND HAZARDOUS SUBSTANCE which should be handled by trained staff only.

**Storage:** 4 °C,-20 °C

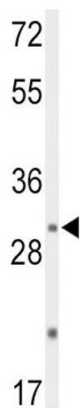
**Storage Comment:** Maintain refrigerated at 2-8 °C for up to 6 months. For long term storage store at -20 °C in small aliquots to prevent freeze-thaw cycles.

**Expiry Date:** 6 months



### Flow Cytometry

**Image 1.** DUSP2 Antibody (C-term) (ABIN653027 and ABIN2842647) flow cytometric analysis of HepG2 cells (right histogram) compared to a negative control cell (left histogram). FITC-conjugated goat-anti-rabbit secondary antibodies were used for the analysis.



### Western Blotting

**Image 2.** Western blot analysis of DUSP2 Antibody (C-term) (ABIN653027 and ABIN2842647) in mouse liver tissue lysates (35 µg/lane). DUSP2 (arrow) was detected using the purified Pab.