



[Go to Product page](#)

Datasheet for ABIN653034

anti-S100A10 antibody (AA 12-40)

3 Images

Overview

Quantity:	400 µL
Target:	S100A10
Binding Specificity:	AA 12-40
Reactivity:	Human
Host:	Rabbit
Clonality:	Polyclonal
Conjugate:	This S100A10 antibody is un-conjugated
Application:	Western Blotting (WB), Immunohistochemistry (Paraffin-embedded Sections) (IHC (p)), Flow Cytometry (FACS)

Product Details

Immunogen:	This S100A10 antibody is generated from rabbits immunized with a KLH conjugated synthetic peptide between 12-40 amino acids from the Central region of human S100A10.
Clone:	RB21022
Isotype:	Ig Fraction
Predicted Reactivity:	B, Pig, Rb
Purification:	This antibody is purified through a protein A column, followed by peptide affinity purification.

Target Details

Target:	S100A10
---------	---------

Target Details

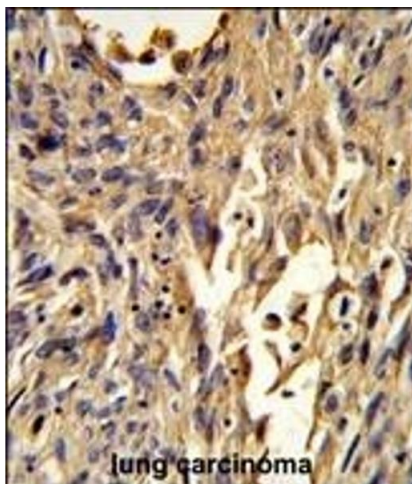
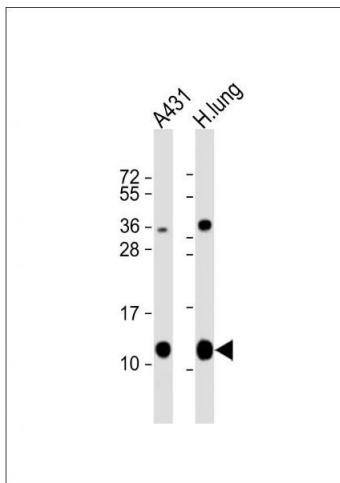
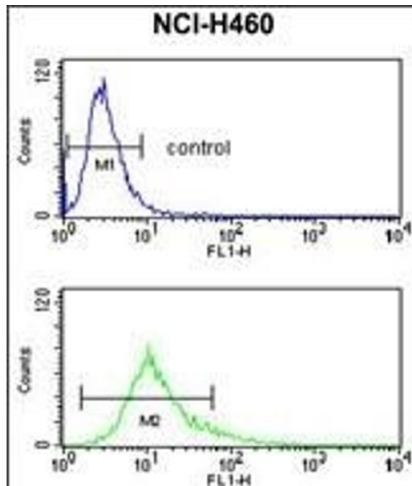
Alternative Name:	S100A10 (S100A10 Products)
Background:	The protein encoded by this gene is a member of the S100 family of proteins containing 2 EF-hand calcium-binding motifs. S100 proteins are localized in the cytoplasm and/or nucleus of a wide range of cells, and involved in the regulation of a number of cellular processes such as cell cycle progression and differentiation.
Molecular Weight:	11203
Gene ID:	6281
NCBI Accession:	NP_002957
UniProt:	P60903
Pathways:	S100 Proteins

Application Details

Application Notes:	WB: 1:8000. IHC-P: 1:50~100. FC: 1:10~50
Restrictions:	For Research Use only

Handling

Format:	Liquid
Buffer:	Purified polyclonal antibody supplied in PBS with 0.09 % (W/V) sodium azide.
Preservative:	Sodium azide
Precaution of Use:	This product contains Sodium azide: a POISONOUS AND HAZARDOUS SUBSTANCE which should be handled by trained staff only.
Storage:	4 °C, -20 °C
Storage Comment:	Maintain refrigerated at 2-8 °C for up to 6 months. For long term storage store at -20 °C in small aliquots to prevent freeze-thaw cycles.
Expiry Date:	6 months



Flow Cytometry

Image 1. S100A10 Antibody (Center) (ABIN653034 and ABIN2842649) flow cytometry analysis of NCI- cells (bottom histogram) compared to a negative control cell (top histogram). FITC-conjugated goat-anti-rabbit secondary antibodies were used for the analysis.

Western Blotting

Image 2. All lanes : Anti-S100A10 Antibody (Center) at 1:8000 dilution Lane 1: A431 whole cell lysate Lane 2: human lung lysate Lysates/proteins at 20 µg per lane. Secondary Goat Anti-Rabbit IgG, (H+L), Peroxidase conjugated at 1/10000 dilution. Predicted band size : 11 kDa Blocking/Dilution buffer: 5 % NFDN/TBST.

Immunohistochemistry (Paraffin-embedded Sections)

Image 3. Formalin-fixed and paraffin-embedded human lung carcinoma reacted with S100A10 Antibody (Center), which was peroxidase-conjugated to the secondary antibody, followed by DAB staining. This data demonstrates the use of this antibody for immunohistochemistry, clinical relevance has not been evaluated.