



[Go to Product page](#)

Datasheet for ABIN653037

anti-PPM1H antibody (AA 235-263)

3 Images

2 Publications

Overview

Quantity:	400 µL
Target:	PPM1H
Binding Specificity:	AA 235-263
Reactivity:	Human, Mouse
Host:	Rabbit
Clonality:	Polyclonal
Conjugate:	This PPM1H antibody is un-conjugated
Application:	Western Blotting (WB), Flow Cytometry (FACS), Immunohistochemistry (Paraffin-embedded Sections) (IHC (p))

Product Details

Immunogen:	This PPM1H antibody is generated from rabbits immunized with a KLH conjugated synthetic peptide between 235-263 amino acids from the Central region of human PPM1H.
Clone:	RB21341
Isotype:	Ig Fraction
Purification:	This antibody is purified through a protein A column, followed by peptide affinity purification.

Target Details

Target:	PPM1H
Alternative Name:	PPM1H (PPM1H Products)

Target Details

Molecular Weight:	56448
Gene ID:	57460
NCBI Accession:	NP_065751
UniProt:	Q9ULR3

Application Details

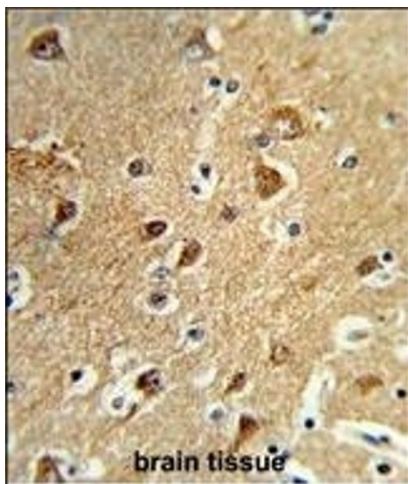
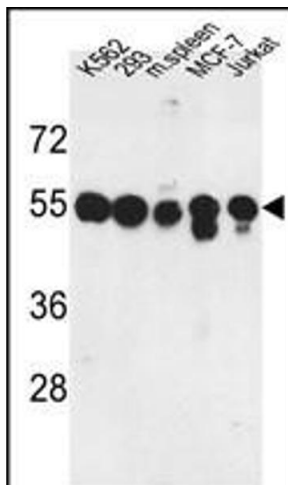
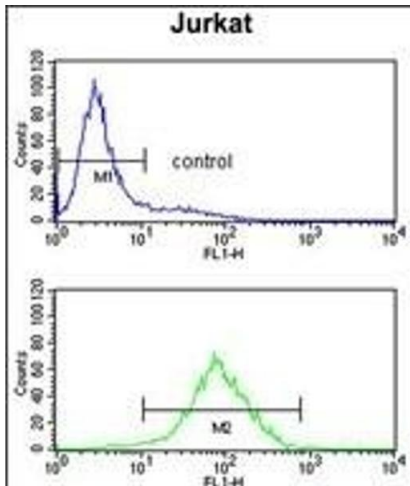
Application Notes:	WB: 1:1000. IHC-P: 1:50~100. FC: 1:10~50
Restrictions:	For Research Use only

Handling

Format:	Liquid
Buffer:	Purified polyclonal antibody supplied in PBS with 0.09 % (W/V) sodium azide.
Preservative:	Sodium azide
Precaution of Use:	This product contains Sodium azide: a POISONOUS AND HAZARDOUS SUBSTANCE which should be handled by trained staff only.
Storage:	4 °C,-20 °C
Storage Comment:	Maintain refrigerated at 2-8 °C for up to 6 months. For long term storage store at -20 °C in small aliquots to prevent freeze-thaw cycles.
Expiry Date:	6 months

Publications

Product cited in:	Zhang, Liu, Xu, Sun, Gong, Shao: "Neferine, an alkaloid ingredient in lotus seed embryo, inhibits proliferation of human osteosarcoma cells by promoting p38 MAPK-mediated p21 stabilization." in: European journal of pharmacology , Vol. 677, Issue 1-3, pp. 47-54, (2012) (PubMed).
-------------------	---



Flow Cytometry

Image 1. M1H Antibody (Center) (ABIN653037 and ABIN2842651) flow cytometry analysis of Jurkat cells (bottom histogram) compared to a negative control cell (top histogram). FITC-conjugated goat-anti-rabbit secondary antibodies were used for the analysis.

Western Blotting

Image 2. Western blot analysis of M1H Antibody (Center) (ABIN653037 and ABIN2842651) in K562, 293, MCF-7, Jurkat cell line and mouse spleen tissue lysates (35 μ g/lane). M1H (arrow) was detected using the purified Pab.

Immunohistochemistry (Paraffin-embedded Sections)

Image 3. Formalin-fixed and paraffin-embedded human brain tissue reacted with M1H Antibody (Center), which was peroxidase-conjugated to the secondary antibody, followed by DAB staining. This data demonstrates the use of this antibody for immunohistochemistry, clinical relevance has not been evaluated.