

Datasheet for ABIN653039
anti-FBLN3 antibody (N-Term)[Go to Product page](#)

4 Images

3 Publications

Overview

Quantity:	400 µL
Target:	FBLN3
Binding Specificity:	AA 119-148, N-Term
Reactivity:	Human, Mouse
Host:	Rabbit
Clonality:	Polyclonal
Conjugate:	This FBLN3 antibody is un-conjugated
Application:	Western Blotting (WB), Flow Cytometry (FACS), Immunohistochemistry (Paraffin-embedded Sections) (IHC (p))

Product Details

Immunogen:	This EFEMP1 antibody is generated from rabbits immunized with a KLH conjugated synthetic peptide between 119-148 amino acids from the N-terminal region of human EFEMP1.
Clone:	RB22140
Isotype:	Ig Fraction
Predicted Reactivity:	Pr, Rat
Purification:	This antibody is purified through a protein A column, followed by peptide affinity purification.

Target Details

Target:	FBLN3
---------	-------

Target Details

Alternative Name:	EFEMP1 (FBLN3 Products)
Background:	EFEMP1 encodes a member of the fibulin family of extracellular matrix glycoproteins. Like all members of this family, the encoded protein contains tandemly repeated epidermal growth factor-like repeats followed by a C-terminus fibulin-type domain. This gene is upregulated in malignant gliomas and may play a role in the aggressive nature of these tumors.
Molecular Weight:	54641
Gene ID:	2202
NCBI Accession:	NP_001034437 , NP_001034438
UniProt:	Q12805
Pathways:	EGFR Signaling Pathway

Application Details

Application Notes:	WB: 1:1000. WB: 1:1000. IHC-P: 1:50~100. FC: 1:10~50
Restrictions:	For Research Use only

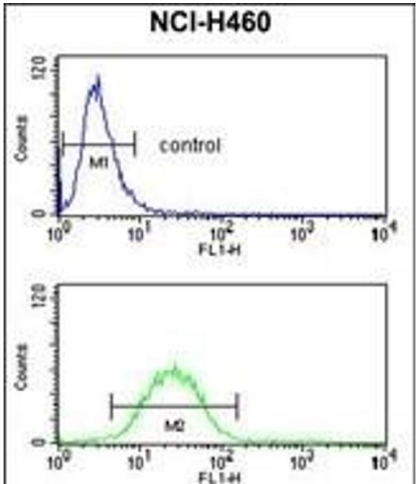
Handling

Format:	Liquid
Buffer:	Purified polyclonal antibody supplied in PBS with 0.09 % (W/V) sodium azide.
Preservative:	Sodium azide
Precaution of Use:	This product contains Sodium azide: a POISONOUS AND HAZARDOUS SUBSTANCE which should be handled by trained staff only.
Storage:	4 °C,-20 °C
Storage Comment:	Maintain refrigerated at 2-8 °C for up to 6 months. For long term storage store at -20 °C in small aliquots to prevent freeze-thaw cycles.
Expiry Date:	6 months

Publications

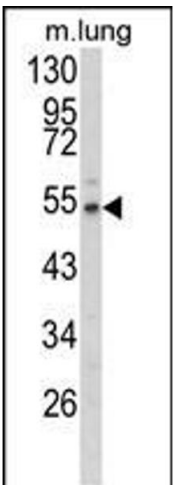
Product cited in:	Meller, VAN Ellen, Gevensleben, Bicker, Hankeln, Gorr, Sailer, Dröge, Schröck, Bootz, Schröck, Perner, Dietrich, Kristiansen: "Ectopic Myoglobin Expression Is Associated with a Favourable Outcome in Head and Neck Squamous Cell Carcinoma Patients." in: Anticancer research , Vol.
-------------------	---

Images



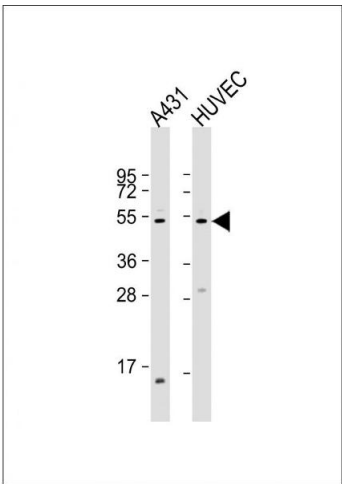
Flow Cytometry

Image 1. EFE Antibody (N-term) (ABIN653039 and ABIN2842653) flow cytometry analysis of NCI- cells (bottom histogram) compared to a negative control cell (top histogram).FITC-conjugated goat-anti-rabbit secondary antibodies were used for the analysis.



Western Blotting

Image 2. Western blot analysis of EFE Antibody (N-term) (ABIN653039 and ABIN2842653) in mouse lung tissue lysates (35 µg/lane). EFE (arrow) was detected using the purified Pab.



Western Blotting

Image 3. All lanes : Anti-EFE Antibody (N-term) at 1:1000 dilution Lane 1: A431 whole cell lysate Lane 2: HUVEC whole cell lysate Lysates/proteins at 20 µg per lane. Secondary Goat Anti-Rabbit IgG, (H+L), Peroxidase conjugated at 1/10000 dilution. Predicted band size : 55 kDa Blocking/Dilution buffer: 5 % NFDm/TBST.

Please check the [product details page](#) for more images. Overall 4 images are available for ABIN653039.