

Datasheet for ABIN653041
anti-KIF11 antibody (N-Term)[Go to Product page](#)

4 Images

Overview

| | |
|----------------------|---|
| Quantity: | 400 µL |
| Target: | KIF11 |
| Binding Specificity: | AA 103-130, N-Term |
| Reactivity: | Human, Hamster |
| Host: | Rabbit |
| Clonality: | Polyclonal |
| Conjugate: | This KIF11 antibody is un-conjugated |
| Application: | Western Blotting (WB), Flow Cytometry (FACS), Immunohistochemistry (Paraffin-embedded Sections) (IHC (p)) |

Product Details

| | |
|---------------|--|
| Immunogen: | This KIF11 antibody is generated from rabbits immunized with a KLH conjugated synthetic peptide between 103-130 amino acids from the N-terminal region of human KIF11. |
| Clone: | RB22568 |
| Isotype: | Ig Fraction |
| Purification: | This antibody is purified through a protein A column, followed by peptide affinity purification. |

Target Details

| | |
|-------------------|--|
| Target: | KIF11 |
| Alternative Name: | KIF11 (KIF11 Products) |

Target Details

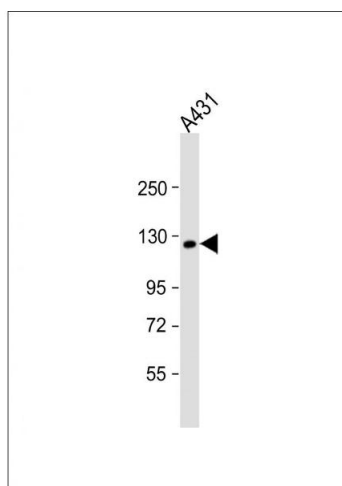
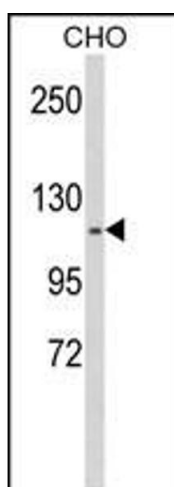
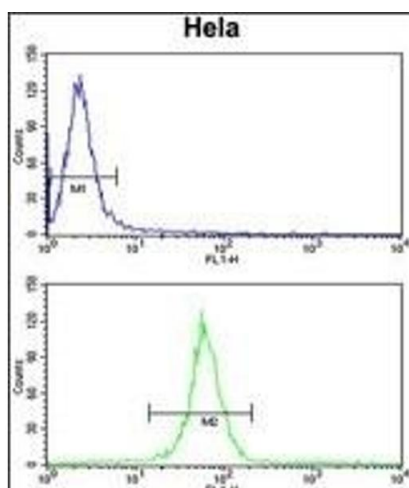
| | |
|-------------------|--|
| Background: | KIF11 belongs to the kinesin-like protein family. Members of this protein family are known to be involved in various kinds of spindle dynamics. The function of this gene product includes chromosome positioning, centrosome separation and establishing a bipolar spindle during cell mitosis. |
| Molecular Weight: | 119159 |
| Gene ID: | 3832 |
| NCBI Accession: | NP_004514 |
| UniProt: | P52732 |

Application Details

| | |
|--------------------|--|
| Application Notes: | WB: 1:1000. WB: 1:1000. IHC-P: 1:50~100. FC: 1:10~50 |
| Restrictions: | For Research Use only |

Handling

| | |
|--------------------|--|
| Format: | Liquid |
| Buffer: | Purified polyclonal antibody supplied in PBS with 0.09 % (W/V) sodium azide. |
| Preservative: | Sodium azide |
| Precaution of Use: | This product contains Sodium azide: a POISONOUS AND HAZARDOUS SUBSTANCE which should be handled by trained staff only. |
| Storage: | 4 °C,-20 °C |
| Storage Comment: | Maintain refrigerated at 2-8 °C for up to 6 months. For long term storage store at -20 °C in small aliquots to prevent freeze-thaw cycles. |
| Expiry Date: | 6 months |



Flow Cytometry

Image 1. KIF11 Antibody (N-term) (ABIN653041 and ABIN2842655) flow cytometry analysis of HeLa cells (bottom histogram) compared to a negative control cell (top histogram). FITC-conjugated goat-anti-rabbit secondary antibodies were used for the analysis.

Western Blotting

Image 2. Western blot analysis of KIF11 Antibody (N-term) (ABIN653041 and ABIN2842655) in CHO cell line lysates (35 µg/lane). KIF11 (arrow) was detected using the purified Pab.

Western Blotting

Image 3. Anti-KIF11 Antibody (N-term) at 1:1000 dilution + A431 whole cell lysate Lysates/proteins at 20 µg per lane. Secondary Goat Anti-Rabbit IgG, (H+L), Peroxidase conjugated at 1/10000 dilution. Predicted band size : 119 kDa Blocking/Dilution buffer: 5 % NFDm/TBST.

Please check the [product details page](#) for more images. Overall 4 images are available for ABIN653041.