

Datasheet for ABIN653043  
**anti-COL17A1 antibody (AA 475-504)**[Go to Product page](#)

## 2 Images

## Overview

Quantity:	400 µL
Target:	COL17A1
Binding Specificity:	AA 475-504
Reactivity:	Human
Host:	Rabbit
Clonality:	Polyclonal
Conjugate:	This COL17A1 antibody is un-conjugated
Application:	Western Blotting (WB), Flow Cytometry (FACS)

## Product Details

Immunogen:	This COL17A1 antibody is generated from rabbits immunized with a KLH conjugated synthetic peptide between 475-504 amino acids from the Central region of human COL17A1.
Clone:	RB22700
Isotype:	Ig Fraction
Purification:	This antibody is purified through a protein A column, followed by peptide affinity purification.

## Target Details

Target:	COL17A1
Alternative Name:	COL17A1 ( <a href="#">COL17A1 Products</a> )
Background:	COL17A1 encodes the alpha chain of type XVII collagen. Unlike most collagens, collagen XVII is

## Target Details

a transmembrane protein. Collagen XVII is a structural component of hemidesmosomes, multiprotein complexes at the dermal-epidermal basement membrane zone that mediate adhesion of keratinocytes to the underlying membrane.

Molecular Weight: 150419

Gene ID: 1308

NCBI Accession: [NP\\_000485](#)

UniProt: [Q9UMD9](#)

## Application Details

Application Notes: WB: 1:2000. FC: 1:25

Restrictions: For Research Use only

## Handling

Format: Liquid

Buffer: Purified polyclonal antibody supplied in PBS with 0.09 % (W/V) sodium azide.

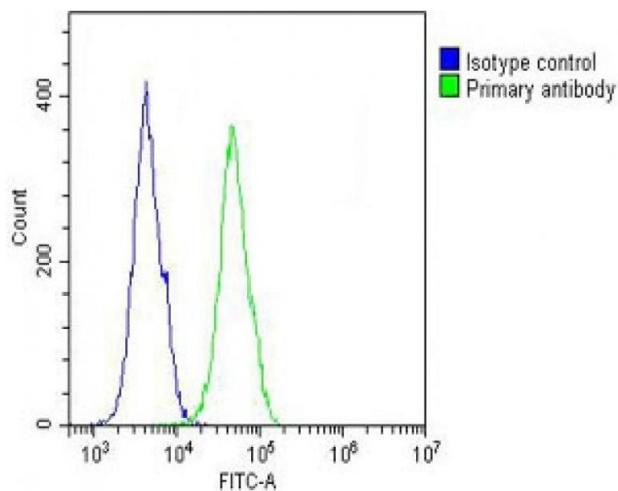
Preservative: Sodium azide

Precaution of Use: This product contains Sodium azide: a POISONOUS AND HAZARDOUS SUBSTANCE which should be handled by trained staff only.

Storage: 4 °C, -20 °C

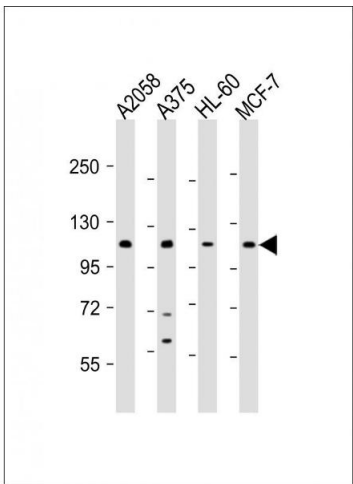
Storage Comment: Maintain refrigerated at 2-8 °C for up to 6 months. For long term storage store at -20 °C in small aliquots to prevent freeze-thaw cycles.

Expiry Date: 6 months



### Flow Cytometry

**Image 1.** Overlay histogram showing A431 cells stained with (ABIN653043 and ABIN2842656) (green line). The cells were fixed with 2 % paraformaldehyde (10 min) and then permeabilized with 90 % methanol for 10 min. The cells were then incubated in 2 % bovine serum albumin to block non-specific protein-protein interactions followed by the antibody ((ABIN653043 and ABIN2842656), 1:25 dilution) for 60 min at 37 °C. The secondary antibody used was Goat Anti-Rabbit IgG, DyLight® 488 Conjugated Highly Cross-Adsorbed(OH191631) at 1/200 dilution for 40 min at 37 °C. Isotype control antibody (blue line) was rabbit IgG (1 µg/1x10<sup>6</sup> cells) used under the same conditions. Acquisition of >10,000 events was performed.



### Western Blotting

**Image 2.** All lanes : Anti-COL17A1 Antibody (Center) at 1:2000 dilution Lane 1: whole cell lysate Lane 2: whole cell lysate Lane 3: HL-60 whole cell lysate Lane 4: MCF-7 whole cell lysate Lysates/proteins at 20 µg per lane. Secondary Goat Anti-Rabbit IgG, (H+L), Peroxidase conjugated at 1/10000 dilution. Predicted band size : 150 kDa Blocking/Dilution buffer: 5 % NFDm/TBST.