

Datasheet for ABIN653046
anti-GCLM antibody (C-Term)[Go to Product page](#)

7 Images

1 Publication

Overview

Quantity:	400 µL
Target:	GCLM
Binding Specificity:	AA 246-274, C-Term
Reactivity:	Human, Mouse
Host:	Rabbit
Clonality:	Polyclonal
Conjugate:	This GCLM antibody is un-conjugated
Application:	Western Blotting (WB), Immunofluorescence (IF), Flow Cytometry (FACS), Immunohistochemistry (Paraffin-embedded Sections) (IHC (p))

Product Details

Immunogen:	This GCLM antibody is generated from rabbits immunized with a KLH conjugated synthetic peptide between 246-274 amino acids from the C-terminal region of human GCLM.
Clone:	RB22980
Isotype:	Ig Fraction
Purification:	This antibody is purified through a protein A column, followed by peptide affinity purification.

Target Details

Target:	GCLM
Alternative Name:	GCLM (GCLM Products)

Target Details

Background:	GCLM known as gamma-glutamylcysteine synthetase, is the first rate limiting enzyme of glutathione synthesis. The enzyme consists of two subunits, a heavy catalytic subunit and a light regulatory subunit. Gamma glutamylcysteine synthetase deficiency has been implicated in some forms of hemolytic anemia.
Molecular Weight:	30727
Gene ID:	2730
NCBI Accession:	NP_002052
UniProt:	P48507

Application Details

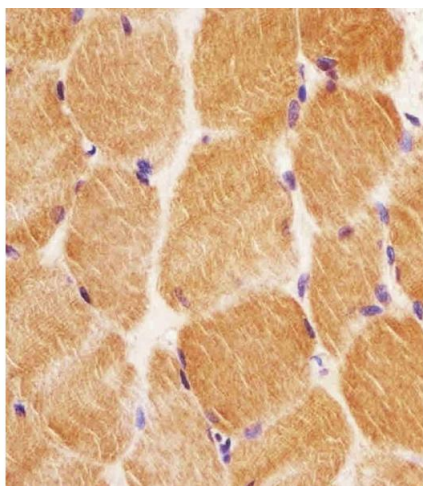
Application Notes:	IF: 1:10~50. WB: 1:1000. WB: 1:1000. WB: 1:8000. IHC-P: 1:25. IHC-P: 1:25. FC: 1:10~50
Restrictions:	For Research Use only

Handling

Format:	Liquid
Buffer:	Purified polyclonal antibody supplied in PBS with 0.09 % (W/V) sodium azide.
Preservative:	Sodium azide
Precaution of Use:	This product contains Sodium azide: a POISONOUS AND HAZARDOUS SUBSTANCE which should be handled by trained staff only.
Storage:	4 °C,-20 °C
Storage Comment:	Maintain refrigerated at 2-8 °C for up to 6 months. For long term storage store at -20 °C in small aliquots to prevent freeze-thaw cycles.
Expiry Date:	6 months

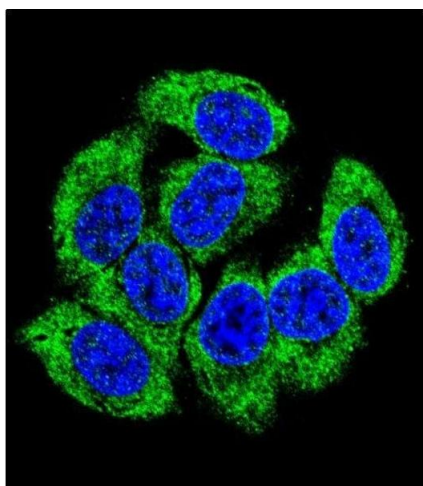
Publications

Product cited in:	Gispert, Parganlija, Klinkenberg, Dröse, Wittig, Mittelbronn, Grzmil, Koob, Hamann, Walter, Büchel, Adler, Hrabé de Angelis, Busch, Zell, Reichert, Brandt, Osiewacz, Jendrach, Auburger: " Loss of mitochondrial peptidase Clpp leads to infertility, hearing loss plus growth retardation via accumulation of CLPX, mtDNA and inflammatory factors." in: Human molecular genetics , Vol. 22, Issue 24, pp. 4871-87, (2013) (PubMed).
-------------------	---



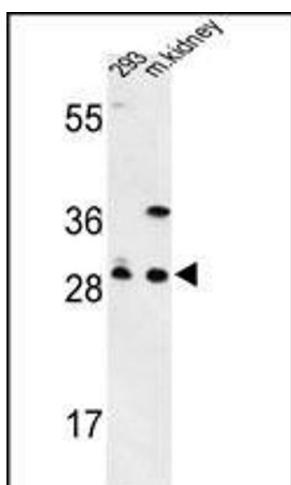
Immunohistochemistry (Paraffin-embedded Sections)

Image 1. B staining GCLM in human skeletal muscle tissue sections by Immunohistochemistry (IHC-P - paraformaldehyde-fixed, paraffin-embedded sections). Tissue was fixed with formaldehyde and blocked with 3 % BSA for 0.5 hour at room temperature, antigen retrieval was by heat mediation with a citrate buffer (pH 6). Samples were incubated with primary antibody (1/25) for 1 hours at 37 °C. A undiluted biotinylated goat polyvalent antibody was used as the secondary antibody.



Immunofluorescence

Image 2. Confocal immunofluorescent analysis of GCLM Antibody (C-term) (ABIN653046 and ABIN2842657) with 293 cell followed by Alexa Fluor 488-conjugated goat anti-rabbit IgG (green). DAPI was used to stain the cell nuclear (blue).



Western Blotting

Image 3. Western blot analysis of GCLM Antibody (C-term) (ABIN653046 and ABIN2842657) in 293 cell line and mouse kidney tissue lysates (35 µg/lane). GCLM (arrow) was detected using the purified Pab.

Please check the [product details page](#) for more images. Overall 7 images are available for ABIN653046.