

Datasheet for ABIN653056
anti-PCBD1 antibody (AA 11-37)



[Go to Product page](#)

3 Images

Overview

Quantity:	400 µL
Target:	PCBD1
Binding Specificity:	AA 11-37
Reactivity:	Human, Mouse
Host:	Rabbit
Clonality:	Polyclonal
Conjugate:	This PCBD1 antibody is un-conjugated
Application:	Western Blotting (WB), Flow Cytometry (FACS), Immunohistochemistry (Paraffin-embedded Sections) (IHC (p))

Product Details

Immunogen:	This PCBD1 antibody is generated from rabbits immunized with a KLH conjugated synthetic peptide between 11-37 amino acids from the Central region of human PCBD1.
Clone:	RB21140
Isotype:	Ig Fraction
Predicted Reactivity:	B, Rat
Purification:	This antibody is purified through a protein A column, followed by peptide affinity purification.

Target Details

Target:	PCBD1
---------	-------

Target Details

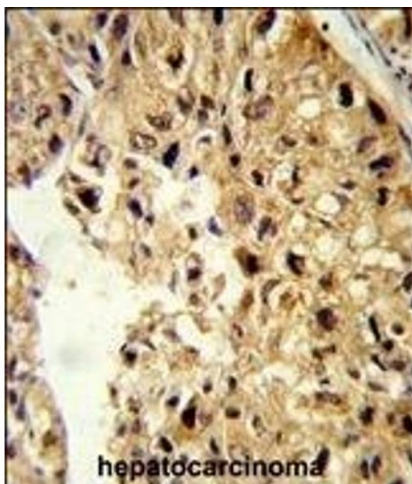
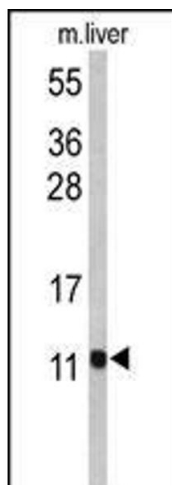
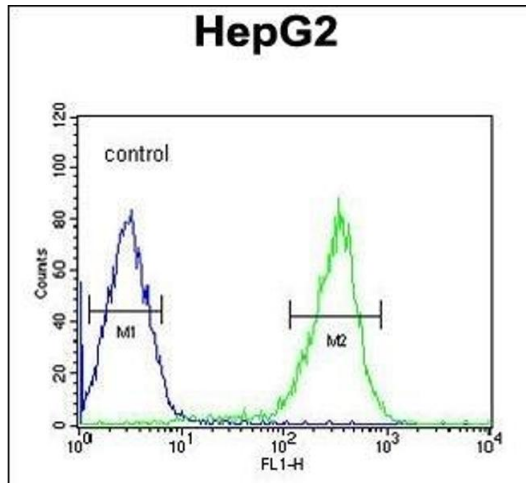
Alternative Name:	PCBD1 (PCBD1 Products)
Background:	PCBD1 encodes pterin-4 alpha-carbinolamine dehydratase, an enzyme involved in phenylalanine hydroxylation. A deficiency of this enzyme leads to hyperphenylalaninemia. The enzyme regulates the homodimerization of the transcription factor hepatocyte nuclear factor 1 (HNF1).
Molecular Weight:	12000
Gene ID:	5092
NCBI Accession:	NP_000272
UniProt:	P61457

Application Details

Application Notes:	WB: 1:1000. IHC-P: 1:50~100. FC: 1:10~50
Restrictions:	For Research Use only

Handling

Format:	Liquid
Buffer:	Purified polyclonal antibody supplied in PBS with 0.09 % (W/V) sodium azide.
Preservative:	Sodium azide
Precaution of Use:	This product contains Sodium azide: a POISONOUS AND HAZARDOUS SUBSTANCE which should be handled by trained staff only.
Storage:	4 °C,-20 °C
Storage Comment:	Maintain refrigerated at 2-8 °C for up to 6 months. For long term storage store at -20 °C in small aliquots to prevent freeze-thaw cycles.
Expiry Date:	6 months



Flow Cytometry

Image 1. PCBD1 Antibody (Center) (ABIN653056 and ABIN2842659) flow cytometric analysis of HepG2 cells (right histogram) compared to a negative control cell (left histogram). FITC-conjugated goat-anti-rabbit secondary antibodies were used for the analysis.

Western Blotting

Image 2. Western blot analysis of PCBD1 Antibody (Center) (ABIN653056 and ABIN2842659) in mouse liver tissue lysates (35 µg/lane). PCBD1 (arrow) was detected using the purified Pab.

Immunohistochemistry (Paraffin-embedded Sections)

Image 3. Formalin-fixed and paraffin-embedded human hepatocarcinoma reacted with PCBD1 Antibody (Center), which was peroxidase-conjugated to the secondary antibody, followed by DAB staining. This data demonstrates the use of this antibody for immunohistochemistry, clinical relevance has not been evaluated.