

Datasheet for ABIN653063
anti-AMPD2 antibody (AA 187-217)[Go to Product page](#)

3 Images

Overview

Quantity:	400 µL
Target:	AMPD2
Binding Specificity:	AA 187-217
Reactivity:	Human
Host:	Rabbit
Clonality:	Polyclonal
Conjugate:	This AMPD2 antibody is un-conjugated
Application:	Western Blotting (WB), Flow Cytometry (FACS), Immunohistochemistry (Paraffin-embedded Sections) (IHC (p))

Product Details

Immunogen:	This AMPD2 antibody is generated from rabbits immunized with a KLH conjugated synthetic peptide between 187-217 amino acids from the Central region of human AMPD2.
Clone:	RB17668
Isotype:	Ig Fraction
Purification:	This antibody is prepared by Saturated Ammonium Sulfate (SAS) precipitation followed by dialysis against PBS.

Target Details

Target:	AMPD2
Alternative Name:	AMPD2 (AMPD2 Products)

Target Details

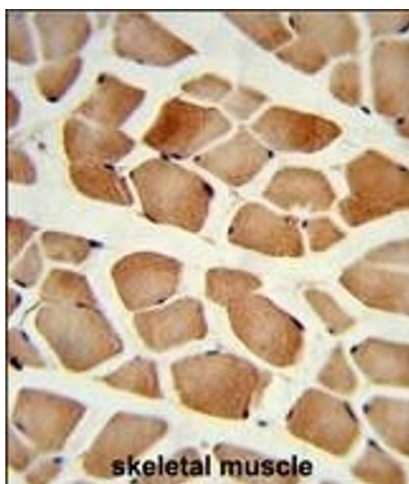
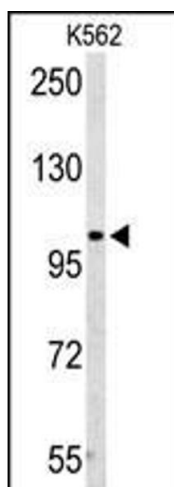
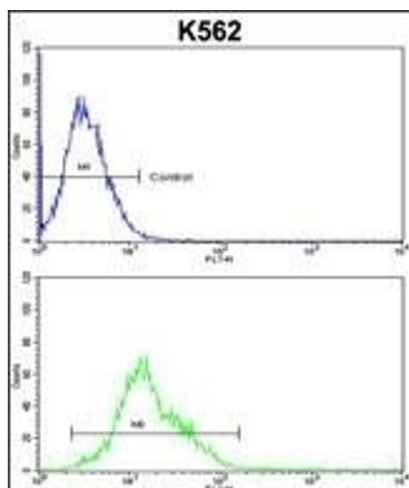
Background:	AMP deaminase plays a critical role in energy metabolism.
Molecular Weight:	100688
Gene ID:	271
NCBI Accession:	NP_001244289 , NP_001244290 , NP_004028 , NP_631895 , NP_981949
UniProt:	Q01433

Application Details

Application Notes:	WB: 1:1000. IHC-P: 1:50~100. FC: 1:10~50
Restrictions:	For Research Use only

Handling

Format:	Liquid
Buffer:	Purified polyclonal antibody supplied in PBS with 0.09 % (W/V) sodium azide.
Preservative:	Sodium azide
Precaution of Use:	This product contains Sodium azide: a POISONOUS AND HAZARDOUS SUBSTANCE which should be handled by trained staff only.
Storage:	4 °C, -20 °C
Storage Comment:	Maintain refrigerated at 2-8 °C for up to 6 months. For long term storage store at -20 °C in small aliquots to prevent freeze-thaw cycles.
Expiry Date:	6 months



Flow Cytometry

Image 1. PD2 Antibody (Center) (ABIN653063 and ABIN2842664) flow cytometric analysis of k562 cells (bottom histogr) compared to a negative control cell (top histogr). FITC-conjugated goat-anti-rabbit secondary antibodies were used for the analysis.

Western Blotting

Image 2. Western blot analysis of PD2 Antibody (Center) (ABIN653063 and ABIN2842664) in K562 cell line lysates (35 µg/lane). PD2 (arrow) was detected using the purified Pab.

Immunohistochemistry (Paraffin-embedded Sections)

Image 3. Formalin-fixed and paraffin-embedded human skeletal muscle reacted with PD2 Antibody (Center), which was peroxidase-conjugated to the secondary antibody, followed by DAB staining. This data demonstrates the use of this antibody for immunohistochemistry, clinical relevance has not been evaluated.