

Datasheet for ABIN653064
anti-ADAMDEC1 antibody (N-Term)

3 Images

[Go to Product page](#)

Overview

Quantity:	400 µL
Target:	ADAMDEC1
Binding Specificity:	AA 39-69, N-Term
Reactivity:	Human
Host:	Rabbit
Clonality:	Polyclonal
Conjugate:	This ADAMDEC1 antibody is un-conjugated
Application:	Western Blotting (WB), Immunohistochemistry (Paraffin-embedded Sections) (IHC (p)), Flow Cytometry (FACS)

Product Details

Immunogen:	This ADAMDEC1 antibody is generated from rabbits immunized with a KLH conjugated synthetic peptide between 39-69 amino acids from the N-terminal region of human ADAMDEC1.
Clone:	RB17778
Isotype:	Ig Fraction
Purification:	This antibody is prepared by Saturated Ammonium Sulfate (SAS) precipitation followed by dialysis against PBS.

Target Details

Target:	ADAMDEC1
---------	----------

Target Details

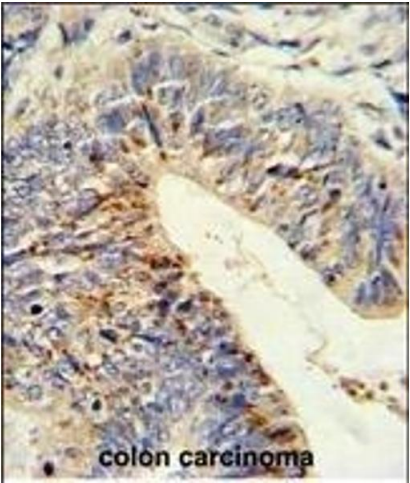
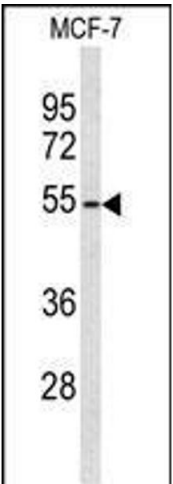
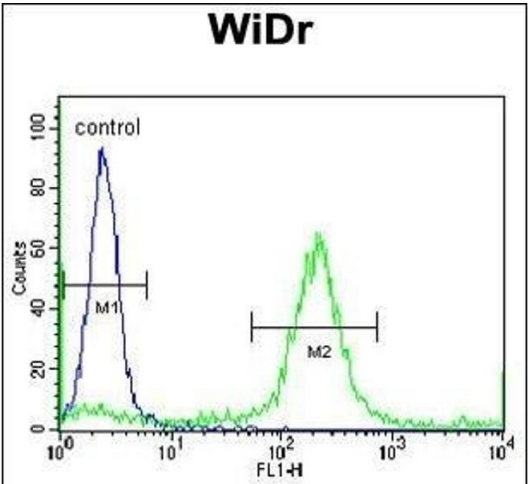
Alternative Name:	ADAMDEC1 (ADAMDEC1 Products)
Background:	ADAMDEC1 may play an important role in the control of the immune response and during pregnancy.
Molecular Weight:	52775
Gene ID:	27299
NCBI Accession:	NP_001138743 , NP_001138744 , NP_055294
UniProt:	O15204

Application Details

Application Notes:	WB: 1:1000. IHC-P: 1:50~100. FC: 1:10~50
Restrictions:	For Research Use only

Handling

Format:	Liquid
Buffer:	Purified polyclonal antibody supplied in PBS with 0.09 % (W/V) sodium azide.
Preservative:	Sodium azide
Precaution of Use:	This product contains Sodium azide: a POISONOUS AND HAZARDOUS SUBSTANCE which should be handled by trained staff only.
Storage:	4 °C,-20 °C
Storage Comment:	Maintain refrigerated at 2-8 °C for up to 6 months. For long term storage store at -20 °C in small aliquots to prevent freeze-thaw cycles.
Expiry Date:	6 months



Flow Cytometry

Image 1. ADDEC1 Antibody (N-term) (ABIN653064 and ABIN2842665) flow cytometric analysis of WiDr cells (right histogram) compared to a negative control cell (left histogram). FITC-conjugated goat-anti-rabbit secondary antibodies were used for the analysis.

Western Blotting

Image 2. Western blot analysis of ADDEC1 Antibody (N-term) (ABIN653064 and ABIN2842665) in MCF-7 cell line lysates (35 µg/lane). ADDEC1 (arrow) was detected using the purified Pab.

Immunohistochemistry (Paraffin-embedded Sections)

Image 3. Formalin-fixed and paraffin-embedded human colon carcinoma reacted with ADDEC1 Antibody (N-term), which was peroxidase-conjugated to the secondary antibody, followed by DAB staining. This data demonstrates the use of this antibody for immunohistochemistry, clinical relevance has not been evaluated.