



Datasheet for ABIN653067 **anti-CREM antibody (C-Term)**



[Go to Product page](#)

3 Images

Overview

Quantity:	400 µL
Target:	CREM
Binding Specificity:	AA 287-314, C-Term
Reactivity:	Human
Host:	Rabbit
Clonality:	Polyclonal
Conjugate:	This CREM antibody is un-conjugated
Application:	Western Blotting (WB), Flow Cytometry (FACS)

Product Details

Immunogen:	This CREM antibody is generated from rabbits immunized with a KLH conjugated synthetic peptide between 287-314 amino acids from the C-terminal region of human CREM.
Clone:	RB17919
Isotype:	Ig Fraction
Predicted Reactivity:	B, M, Rat
Purification:	This antibody is prepared by Saturated Ammonium Sulfate (SAS) precipitation followed by dialysis against PBS.

Target Details

Target:	CREM
---------	------

Target Details

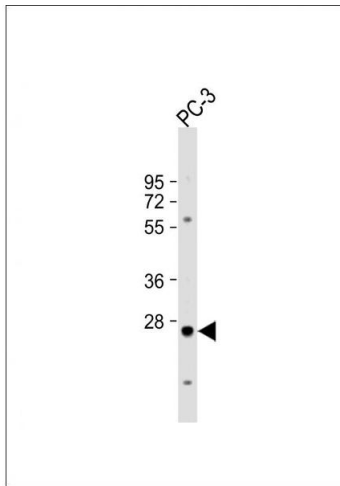
Alternative Name:	CREM (CREM Products)
Background:	CREM is a bZIP transcription factor that binds to the cAMP responsive element found in many viral and cellular promoters. It is an important component of cAMP-mediated signal transduction during the spermatogenetic cycle, as well as other complex processes.
Molecular Weight:	37006
Gene ID:	1390
NCBI Accession:	NP_001254491 , NP_001254493 , NP_001254496 , NP_001254499 , NP_001872 , NP_853549 , NP_874386 , NP_874387 , NP_874388 , NP_874389 , NP_874390 , NP_874392 , NP_874393 , NP_877570 , NP_877571 , NP_87757
UniProt:	Q03060
Pathways:	Retinoic Acid Receptor Signaling Pathway

Application Details

Application Notes:	WB: 1:1000. WB: 1:1000. FC: 1:10~50
Restrictions:	For Research Use only

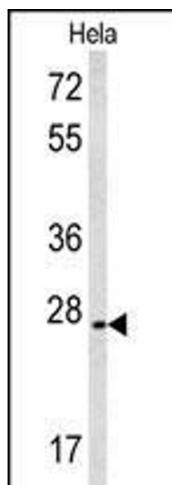
Handling

Format:	Liquid
Buffer:	Purified polyclonal antibody supplied in PBS with 0.09 % (W/V) sodium azide.
Preservative:	Sodium azide
Precaution of Use:	This product contains Sodium azide: a POISONOUS AND HAZARDOUS SUBSTANCE which should be handled by trained staff only.
Storage:	4 °C,-20 °C
Storage Comment:	Maintain refrigerated at 2-8 °C for up to 6 months. For long term storage store at -20 °C in small aliquots to prevent freeze-thaw cycles.
Expiry Date:	6 months



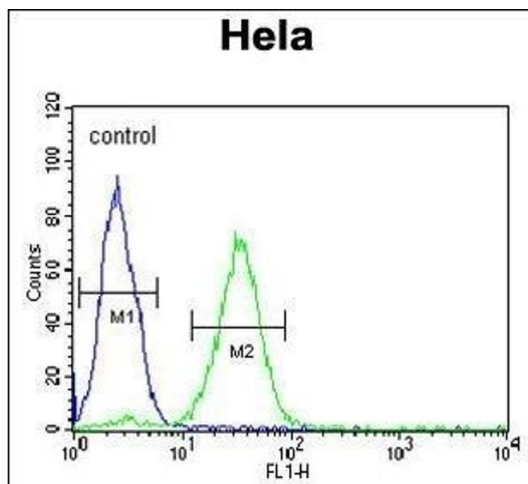
Western Blotting

Image 1. Anti-CREM Antibody (C-term) at 1:1000 dilution + PC-3 whole cell lysate Lysates/proteins at 20 µg per lane. Secondary Goat Anti-Rabbit IgG, (H+L), Peroxidase conjugated at 1/10000 dilution. Predicted band size : 39 kDa
Blocking/Dilution buffer: 5 % NFDm/TBST.



Western Blotting

Image 2. Western blot analysis of CREM Antibody (C-term) (ABIN653067 and ABIN2842668) in HeLa cell line lysates (35 µg/lane). CREM (arrow) was detected using the purified Pab.



Flow Cytometry

Image 3. CREM Antibody (C-term) (ABIN653067 and ABIN2842668) flow cytometric analysis of HeLa cells (right histogram) compared to a negative control (PBS alone) (left histogram). FITC-conjugated goat-anti-rabbit secondary antibodies were used for the analysis.