

Datasheet for ABIN653069
anti-TIMP3 antibody (AA 113-139)

4 Images

[Go to Product page](#)

Overview

Quantity:	400 µL
Target:	TIMP3
Binding Specificity:	AA 113-139
Reactivity:	Human, Mouse
Host:	Rabbit
Clonality:	Polyclonal
Conjugate:	This TIMP3 antibody is un-conjugated
Application:	Western Blotting (WB), Flow Cytometry (FACS), Immunohistochemistry (Paraffin-embedded Sections) (IHC (p))

Product Details

Immunogen:	This TIMP3 antibody is generated from rabbits immunized with a KLH conjugated synthetic peptide between 113-139 amino acids from the Central region of human TIMP3.
Clone:	RB21049
Isotype:	Ig Fraction
Predicted Reactivity:	B, Hs, Pr, Rb, Rat
Purification:	This antibody is purified through a protein A column, followed by peptide affinity purification.

Target Details

Target:	TIMP3
---------	-------

Target Details

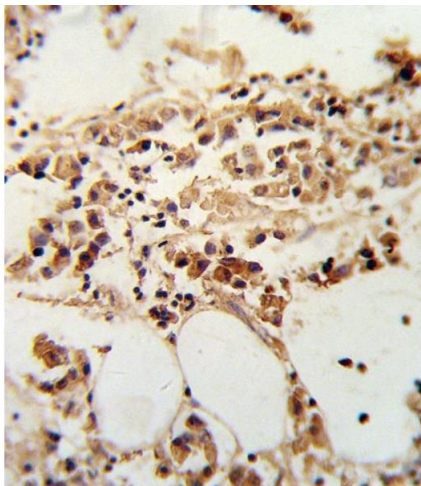
Alternative Name:	TIMP3 (TIMP3 Products)
Background:	TIMP3 is one of inhibitors of the matrix metalloproteinases, a group of peptidases involved in degradation of the extracellular matrix (ECM).
Molecular Weight:	24145
Gene ID:	7078
NCBI Accession:	NP_000353
UniProt:	P35625

Application Details

Application Notes:	WB: 1:1000. WB: 1:1000. IHC-P: 1:10~50. FC: 1:10~50
Restrictions:	For Research Use only

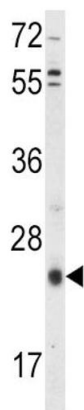
Handling

Format:	Liquid
Buffer:	Purified polyclonal antibody supplied in PBS with 0.09 % (W/V) sodium azide.
Preservative:	Sodium azide
Precaution of Use:	This product contains Sodium azide: a POISONOUS AND HAZARDOUS SUBSTANCE which should be handled by trained staff only.
Storage:	4 °C,-20 °C
Storage Comment:	Maintain refrigerated at 2-8 °C for up to 6 months. For long term storage store at -20 °C in small aliquots to prevent freeze-thaw cycles.
Expiry Date:	6 months



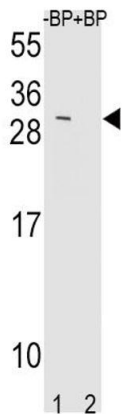
Immunohistochemistry (Paraffin-embedded Sections)

Image 1. Formalin-fixed and paraffin-embedded human breast carcinoma reacted with TI Antibody (Center), which was peroxidase-conjugated to the secondary antibody, followed by DAB staining. This data demonstrates the use of this antibody for immunohistochemistry, clinical relevance has not been evaluated.



Western Blotting

Image 2. Western blot analysis of TI Antibody (Center) (ABIN653069 and ABIN2842670) in HepG2 cell line lysates (35 µg/lane). TI (arrow) was detected using the purified Pab.



Western Blotting

Image 3. Western blot analysis of TI Antibody (Center) Pab (ABIN653069 and ABIN2842670) pre-incubated without(lane 1) and with(lane 2) blocking peptide in mouse NIH-3T3 cell line lysate. TI Antibody (Center) (arrow) was detected using the purified Pab.

Please check the [product details page](#) for more images. Overall 4 images are available for ABIN653069.