

Datasheet for ABIN653071
anti-LOX antibody (AA 234-260)[Go to Product page](#)

2 Images

Overview

Quantity:	400 µL
Target:	LOX
Binding Specificity:	AA 234-260
Reactivity:	Human
Host:	Rabbit
Clonality:	Polyclonal
Conjugate:	This LOX antibody is un-conjugated
Application:	Western Blotting (WB), Flow Cytometry (FACS)

Product Details

Immunogen:	This LOX antibody is generated from rabbits immunized with a KLH conjugated synthetic peptide between 234-260 amino acids from the Central region of human LOX.
Clone:	RB22325
Isotype:	Ig Fraction
Predicted Reactivity:	M, Pig, Rat
Purification:	This antibody is purified through a protein A column, followed by peptide affinity purification.

Target Details

Target:	LOX
Alternative Name:	LOX (LOX Products)

Target Details

Background: LOX is an extracellular copper enzyme that initiates the crosslinking of collagens and elastin. The enzyme catalyzes oxidative deamination of the epsilon-amino group in certain lysine and hydroxylysine residues of collagens and lysine residues of elastin. In addition to crosslinking extracellular matrix proteins, the encoded protein may have a role in tumor suppression.

Molecular Weight: 46944

Gene ID: 4015

NCBI Accession: [NP_002308](#)

UniProt: [P28300](#)

Pathways: [SARS-CoV-2 Protein Interactome](#)

Application Details

Application Notes: WB: 1:1000. FC: 1:10~50

Restrictions: For Research Use only

Handling

Format: Liquid

Buffer: Purified polyclonal antibody supplied in PBS with 0.09 % (W/V) sodium azide.

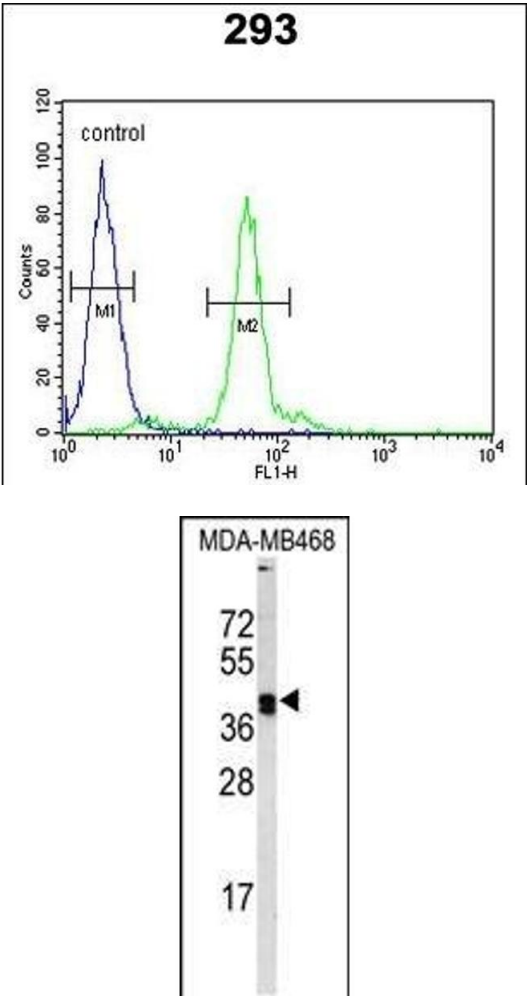
Preservative: Sodium azide

Precaution of Use: This product contains Sodium azide: a POISONOUS AND HAZARDOUS SUBSTANCE which should be handled by trained staff only.

Storage: 4 °C,-20 °C

Storage Comment: Maintain refrigerated at 2-8 °C for up to 6 months. For long term storage store at -20 °C in small aliquots to prevent freeze-thaw cycles.

Expiry Date: 6 months



Flow Cytometry

Image 1. LOX Antibody (Center) (ABIN653071 and ABIN2842672) flow cytometric analysis of 293 cells (right histogram) compared to a negative control cell (left histogram).FITC-conjugated goat-anti-rabbit secondary antibodies were used for the analysis.

Western Blotting

Image 2. Western blot analysis of LOX Antibody (Center) (ABIN653071 and ABIN2842672) in MDA-M cell line lysates (35 µg/lane). LOX (arrow) was detected using the purified Pab.