

Datasheet for ABIN653076

anti-PTGER3 antibody (N-Term)[Go to Product page](#)**4** Images

Overview

Quantity:	400 µL
Target:	PTGER3
Binding Specificity:	AA 17-46, N-Term
Reactivity:	Human
Host:	Rabbit
Clonality:	Polyclonal
Conjugate:	This PTGER3 antibody is un-conjugated
Application:	Western Blotting (WB), Flow Cytometry (FACS)

Product Details

Immunogen:	This PTGER3 antibody is generated from rabbits immunized with a KLH conjugated synthetic peptide between 17-46 amino acids from the N-terminal region of human PTGER3.
Clone:	RB22525
Isotype:	IgG
Purification:	This antibody is purified through a protein A column, followed by peptide affinity purification.

Target Details

Target:	PTGER3
Alternative Name:	PTGER3 (PTGER3 Products)
Background:	PTGER3 is a member of the G-protein coupled receptor family. This protein is one of four

Target Details

receptors identified for prostaglandin E2 (PGE2). This receptor may have many biological functions, which involve digestion, nervous system, kidney reabsorption, and uterine contraction activities. Studies of the mouse counterpart suggest that this receptor may also mediate adrenocorticotrophic hormone response as well as fever generation in response to exogenous and endogenous stimuli.

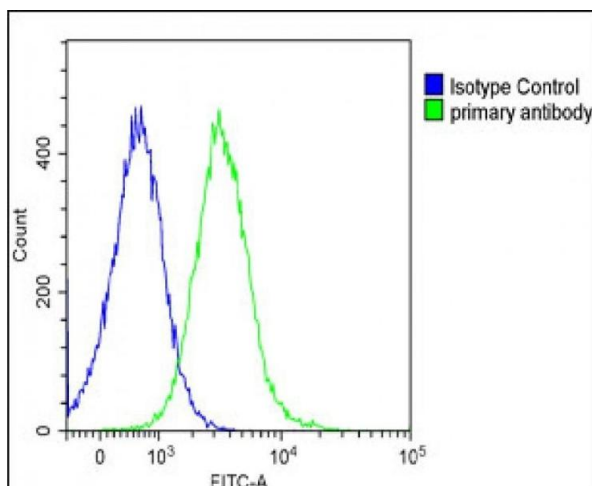
Molecular Weight:	43310
Gene ID:	5733
NCBI Accession:	NP_001119516 , NP_942007 , NP_942008 , NP_942009 , NP_942010 , NP_942011 , NP_942012
UniProt:	P43115

Application Details

Application Notes:	WB: 1:500. WB: 1:1000. WB: 1:1000. FC: 1:25
Restrictions:	For Research Use only

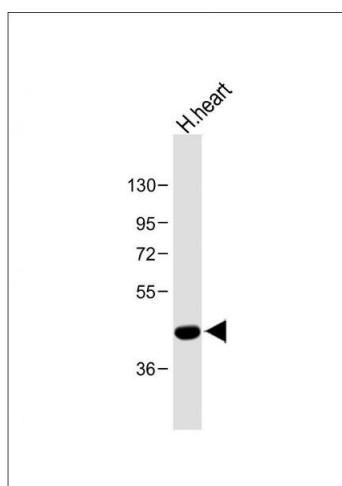
Handling

Format:	Liquid
Buffer:	Purified polyclonal antibody supplied in PBS with 0.09 % (W/V) sodium azide.
Preservative:	Sodium azide
Precaution of Use:	This product contains Sodium azide: a POISONOUS AND HAZARDOUS SUBSTANCE which should be handled by trained staff only.
Storage:	4 °C,-20 °C
Storage Comment:	Maintain refrigerated at 2-8 °C for up to 6 months. For long term storage store at -20 °C in small aliquots to prevent freeze-thaw cycles.
Expiry Date:	6 months



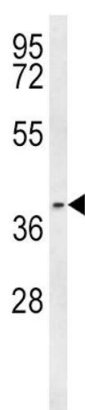
Flow Cytometry

Image 1. Overlay histogram showing Ramos cells stained with A (green line). The cells were fixed with 2 % paraformaldehyde and then permeabilized with 90 % methanol for 10 min. The cells were then incubated in 2 % bovine serum albumin to block non-specific protein-protein interactions followed by the antibody (1:25 dilution) for 60 min at 37 °C. The secondary antibody used was Goat-Anti-Rabbit IgG, DyLight® 488 Conjugated Highly Cross-Adsorbed at 1/200 dilution for 40 min at Room temperature. Isotype control antibody (blue line) was rabbit IgG1 (1 μ g/ 1×10^6 cells) used under the same conditions. Acquisition of >10,000 events was performed.



Western Blotting

Image 2. Anti-PTGER3 Antibody (N-term) at 1:500 dilution + Human heart lysate. Lysates/proteins at 20 μ g per lane. Secondary Goat Anti-Rabbit IgG, (H+L), Peroxidase conjugated at 1/10000 dilution. Predicted band size : 43 kDa. Blocking/Dilution buffer: 5 % NFDm/TBST.



Western Blotting

Image 3. Western blot analysis of PTGER3 Antibody (N-term) (ABIN653076 and ABIN2842675) in Ramos cell line lysates (35 μ g/lane). PTGER3 (arrow) was detected using the purified Pab.

Please check the [product details page](#) for more images. Overall 4 images are available for ABIN653076.